

Fuji USER MANUAL

IMPACT WRENCHES

MODEL : FW-6SCX-6



FW-6SCX-6

SPECIFICATIONS

Model	Clutch Mech	Capacity Bolt Size (Screw Size)		Free Speed (about) rpm	Side to Center (about)		Square Drive Size		Overall Length (about)		Weight (about)		Air Consumption Under Load (about)		Air Hose Size	
		mm	in		mm	in	mm	in	mm	in	kg	lb	m ³ /min	ft ³ /min	mm	in
FW-6SCX-6	Double	6	1/4	8,000	17.5	11/16	9.5	3/8	261	10 1/4	1.6	3.5	0.30	10.6	9.5	3/8

○ 1/4" air inlet thread size.

The performance figures are at 0.63 MPa (6.3 bar).



Refer to "The Instructions and Warning for Safety Use" enclosed in each tool box.

Fuji Industrial Technique Co., Ltd.

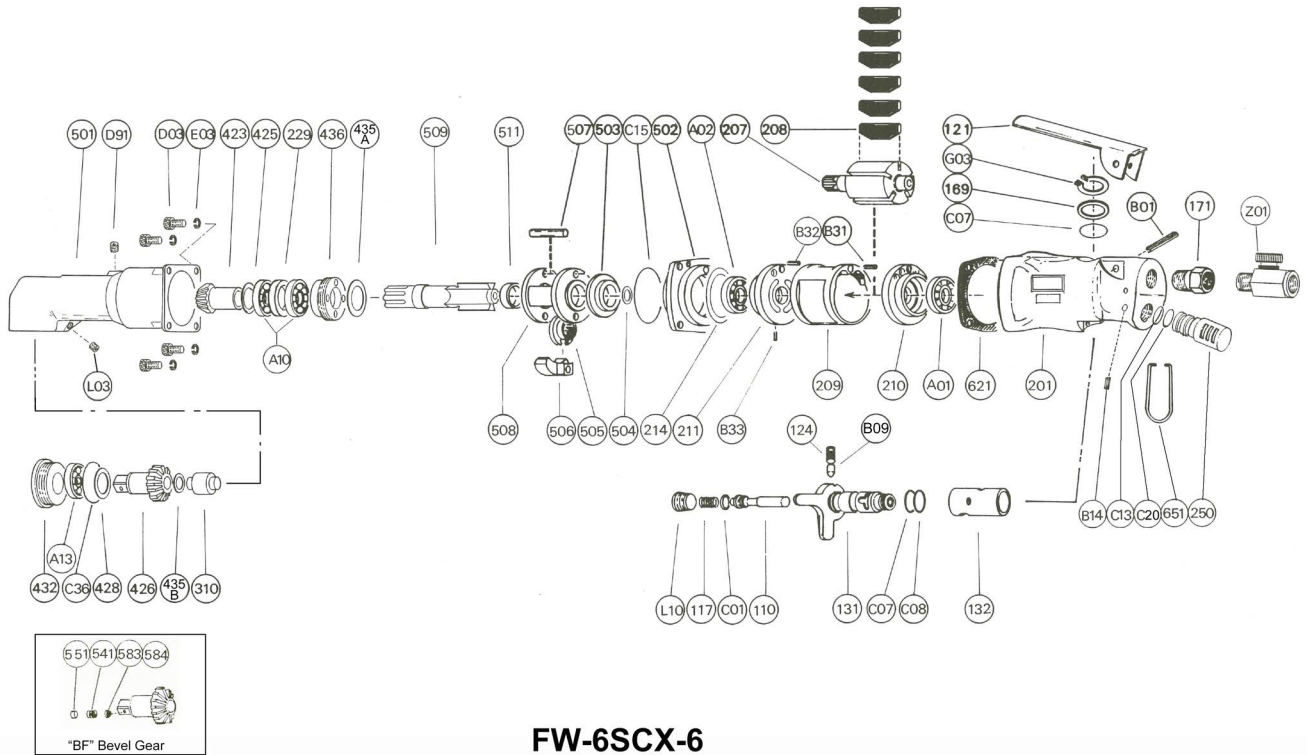
2-1-14, Kamiji, Higashinari-ku, Osaka, 537-0003 Japan

Tel : 81-6-6972-2335

Fax : 81-6-6972-2380

MODEL : FW-6SCX-6

EXPLODED VIEW



PARTS LIST

Index No.	Parts No.	Part Name	Qty
—	W-175006-01	Housing Ass'y (PT)	
—	W-175006-02	Housing Ass'y (NPT)	
201	W-175201-01	Housing	1
(132)	W-002132-00	Reverse Valve Bushing	1
110	W-029110-A	Throttle Valve	1
117	W-002117-00	Throttle Valve Spring	1
121	W-175121-00	Throttle Valve Lever	1
124	G-005124-00	Knock Spring	1
131	W-002131-00	Reverse Valve	1
169	W-002169-00	Reverse Valve Washer	1
171	IB-3020S0	Inlet Joint (PT)	1
	IB-302NS0	Inlet Joint (NPT)	1
B09	NR-35FR	Needle Roller	1
B01	SP-325	Spring Pin	1
C07	O-P10	"O"Ring	2
C08	O-S10	"O"Ring	1
G03	SR-S9	Snap Ring	1
C01	O-P3	"O"Ring	1
L10	PL-1/8	Pulg	1
207	W-172207-00	Rotor	1
208	W-025208-00	Rotor Blade	6
209	W-025209-00	Cylinder	1
(B31)	SP-2.58	Spring Pin	1
(B32)	SP-2.58	Spring Pin	1
210	W-025210-00	Cylinder Upper Plate	1
211	W-175211-00	Cylinder Lower Plate	1
(B33)	SP-1.56	Spring Pin	1
214	W-162214-00	Adjusting Washer (Shim)	1
229	W-177229-00	Bearing Spacer	1
250	W-252250-00	Exhaust Cover	1
310	W-177310-00	Spindle Arbor	1
423	W-050423-00	Bevel Pinion	1
425	W-177425-00	Bevel Pinion Washer	1
428	W-177428-00	Bevel Gear Washer	2
432	W-177432-01	Gear Case Cover	1

- Specify parts number and quantity when ordering.
- The related parts are shown in a thick frame.
- #201, #209 and #211 are supplied together with parts shown in ().

Index No.	Parts No.	Part Name	Qty
435A	W-050435-00	Thrust Washer	1
435B	D-021435-00	Thrust Washer	1
436	W-177436-00	Bearing Holder	1
501	W-177501-00	Clutch Housing	1
502	W-175502-00	Clutch Housing Cover	1
503	W-025503-00	Spacer (B)	1
504	W-025504-00	Spacer (C)	1
505	W-176505-00	Cam	1
506	W-176506-03	Hammer Clutch	2
507	W-025507-00	Clutch Pin	2
508	W-026508-02	Clutch Frame	1
509	W-177509-01	Anvil	1
511	W-025511-00	Clutch Frame Bushing	1
621	W-175621-00	Packing (A)	1
651	W-070651-00	Hanger (Horizontal)	1
A01	BB-EE3	Ball Bearing	1
A02	BB-EE3	Ball Bearing	1
A10	BB-6902T2	Ball Bearing	2
A13	BB-6901	Ball Bearing	1
B14	SP-325	Spring Pin	1
C13	O-S14	"O"Ring	1
C15	O-S38	"O"Ring	1
C20	O-S15	"O"Ring	1
C36	O-S28	"O"Ring	1
D03	CS-522	Cap Screw	4
D91	SS-45K	Set Screw	1
E03	SW-5	Spring Washer	4
L03	PL-1/8	Pulg	1
Z01	W-17	Regulator (PT)	1
	W-17N	Regulator (NPT)	1
Z50	NP-1032	Name Plate	1
Z51	NPN-0X3.2	Rivet Screw	2
"P" Bevel Gear			
426	W-177426-00	Bevel Gear (P)	1
"BF" Bevel Gear			
426	W-177426-01	Bevel Gear (BF)	1
541	W-252541-00	Button Retainer Spring	1
551	W-252551-00	Plug	1
583	W-252583-00	Retainer Button (F)	1