

# Fuji USER MANUAL

## STRAIGHT GRINDERS

MODELS : FG-4VA-1, -2



FG-4VA-1 ,-2

### SPECIFICATIONS

Model	Max.Dia (Grinding Wheel)	Rotational Frequency	Spindle Thread Size	Overall Length	Mass	Max. Air Consumption	Air Inlet Thread Size	Air Hose Size
	mm			mm				mm
FG-4VA-1	75 × 13 × 9.53	7,500	W3/8-16	385	2.2	0.9	Rc 3/8	12.7
FG-4VA-2	100 × 19 × 12.7	6,300	W1/2-12	391	2.3	0.9	Rc 3/8	12.7

The performance figures are at 0.63 MPa(6.3bar).



Refer to "The Instructions and Warning for Safety Use" enclosed in each tool box.

Fuji Industrial Technique Co.,Ltd.

2-1-14, Kamiji, Higashinari-ku, Osaka, 537-0003 Japan

Tel : 81-6-6972-2335

Fax : 81-6-6972-2380

ASSEMBLY TOOLS

ABRASIVE TOOLS

DRILLS / TAPPERS

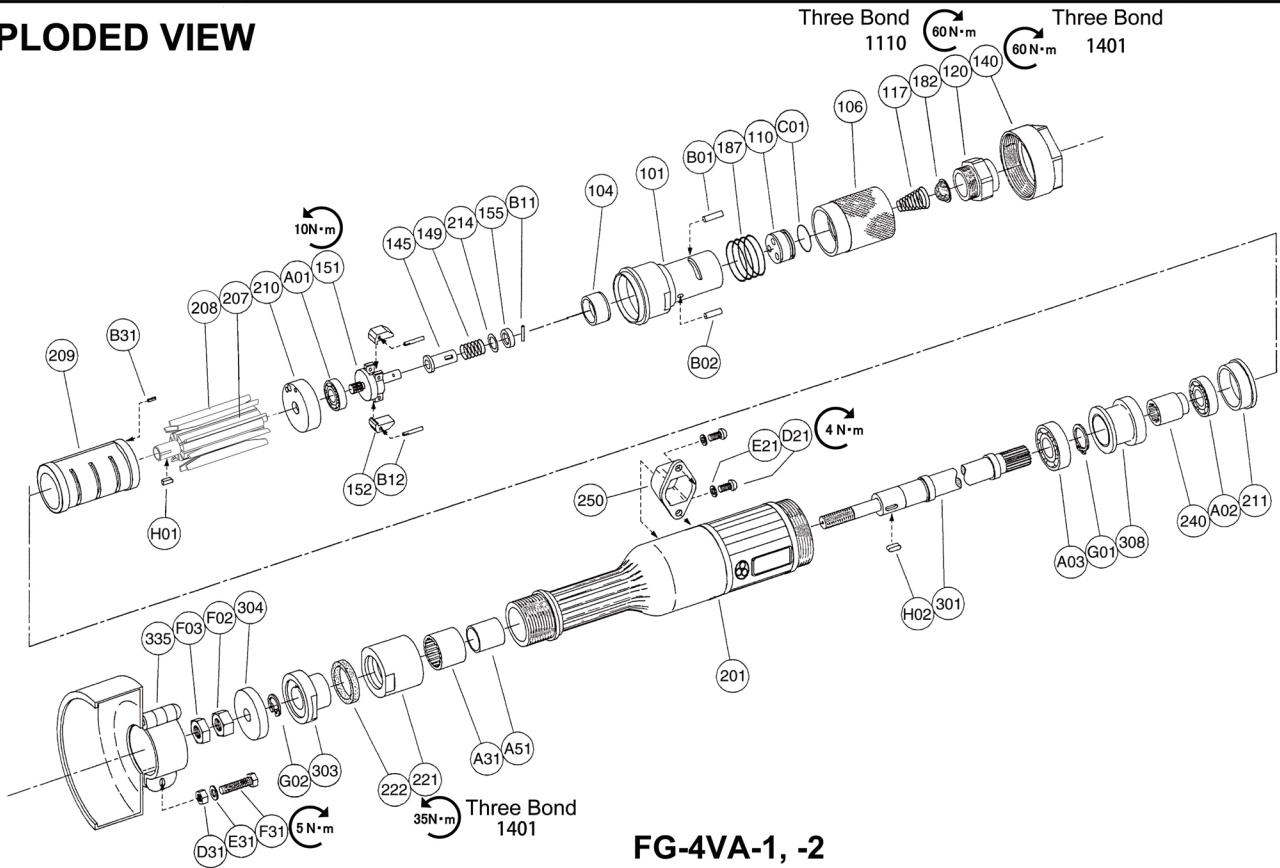
PERCUSSIVE TOOLS

AIR MOTORS

OTHER PRODUCTS

# MODELS : FG-4VA-1, -2

## EXPLODED VIEW



FG-4VA-1, -2

## PARTS LIST

Index No.	Parts No.	Parts Name	Qty
<b>FG-4VA-1</b>			
—	A-093001-00	Housing Cover Ass'y (Rc)	
101	G-170001-50	Housing Cover	1
(104)	G-103104-00	Bushing	1
106	A-086106-00	Throttle Valve Handle	1
110	A-086110-00	Throttle Valve	1
117	A-086117-00	Throttle Valve Spring	1
120	A-086120-00	Throttle Valve Cover (Rc)	1
182	A-086182-00	Strainer	1
187	A-086187-00	Throttle Valve Handle Spring	1
B01	NR-415	Needle Roller	1
B02	NR-412.8	Needle Roller	1
C01	O-S20	"O"Ring	1
—	G-199010-00	Governor Weight Ass'y	
151	A-107151-01	Governor Cage	1
152	G-063152-00	Governor Weight	2
B12	GP-2.516GCH	Grooved Pin	2
140	A-093140-00	Cup Nut	1
145	A-065145-00	Governor Valve	1
149	A-093149-03	Governor Valve Spring	1
155	A-065155-00	Governor Valve Spring Holder	1
201	G-199201-00	Housing	1
207	G-199207-00	Rotor	1
208	G-199208-00	Rotor Blade	9
209	G-199209-00	Cylinder	1
(B31)	SP-26	Spring Pin	2
210	G-199210-00	Cylinder Upper Plate	1
211	G-199211-00	Cylinder Lower Plate	1
214	A-065214-00	Adjusting Washer (Shim)	(1)
	A-065214-01	Adjusting Washer (Shim)	(1)
	A-065214-02	Adjusting Washer (Shim)	(1)
221	G-044221-00	Spindle Bearing Cover	1
222	G-044222-00	Felt Ring	1
240	G-170240-00	Coupling	1
250	G-170250-00	Exhaust Cover	1
301	G-170301-04	Wheel Spindle	1
303	G-170303-06	Wheel Flange (A)	1

Index No.	Parts No.	Parts Name	Qty
304	G-170304-04	Wheel Flange (B)	1
308	G-170308-00	Spacer	1
335	G-170335-01	Wheel Guard	1
(D31)	HS-625	Hexagon Bolt	1
(E31)	SW-6	Washer	1
(F31)	N-6	Nut	1
A01	BB-609MN	Ball Bearing	1
A02	BB-6200	Ball Bearing	1
A03	BB-6202	Ball Bearing	1
A31	NB-HK2020	Needle Bearing	1
A51	IR-172020.5	Inner Race	1
B11	NR-211.8	Needle Roller	1
D21	CS-510B	Cap Screw	2
E21	SW-5	Washer	2
F02	N-W3/8	Nut	1
F03	N-W3/8(3)	Nut	1
G01	SR-S15	Snap Ring	1
G02	SR-E9	Snap Ring	1
H01	K-338F	Key	1
H02	K-4410	Key	1
<b>FG-4VA-2</b>			
(It is common with FG-4VA-1 excluding the parts below.)			
149	G-063149-01	Governor Valve Spring	1
301	G-152301-00	Wheel Spindle	1
304	G-170304-05	Wheel Flange (B)	1
335	G-043335-00	Wheel Guard	1
(D31)	HS-625	Hexagon Bolt	1
(E31)	SW-6	Washer	1
(F31)	N-6	Nut	1
F02	N-W1/2	Nut	1
F03	N-W1/2(3)	Nut	1
G02	SR-E12	Snap Ring	1

- The related parts are shown in a thick frame.
- #101, 209 and #335 are supplied together with parts shown in ( ).
- Specify parts number and quantity when ordering.

■ Standard Accessory

AC No.	Description	Qty
F-112	32mm Open-end Wrench	1