

Fuji USER MANUAL

IMPACT WRENCHES

MODELS : FW-10SX-5 & FW-14SX-5



FW-10SX-5




FW-14SX-5

SPECIFICATIONS

Model	Bolt Size	Square Drive Size	Recommended Torque Range	Max. Torque	Rotational Frequency	Side to Center	Overall Length (without socket)	Mass (without socket)	Air Consumption (At Load)	Air Inlet Thread Size	Air Hose Size
	mm	mm	N·m	N·m	min ⁻¹	mm	mm	kg	m ³ /min		mm
FW-10SX-5	M10	12.7	45 ~ 65	80	8,000	29	318	2.2	0.4	RC or NPT 1/4	9.5
FW-14SX-5	M14	12.7	80 ~ 130	150	6,500	34	356	3.0	0.5	Rc or NPT 1/4	9.5

The performance figures are at 0.63MPa (6.3bar).

 Refer to "The Instructions and Warning for Safety Use" enclosed in each tool box.

Fuji Industrial Technique Co.,Ltd.

2-1-14, Kamiji, Higashinari-ku, Osaka, 537-0003 Japan

Tel : 81-6-6972-2335

Fax : 81-6-6972-2380

ASSEMBLY TOOLS

ABRASIVE TOOLS

DRILLS / TAPPERS

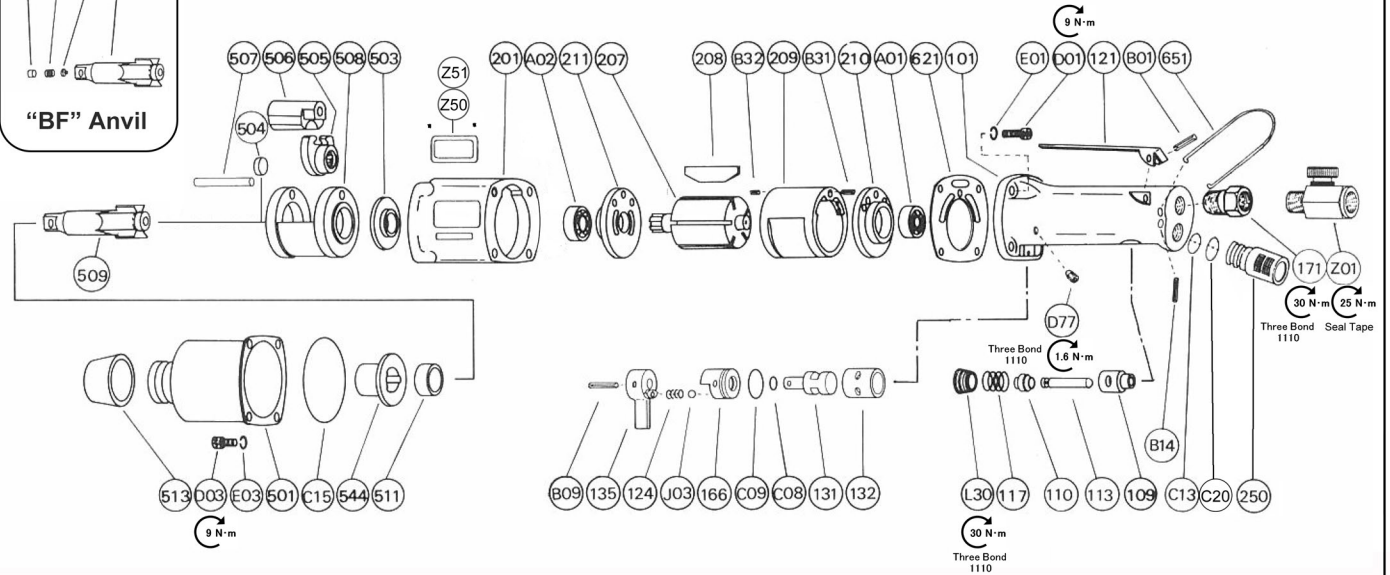
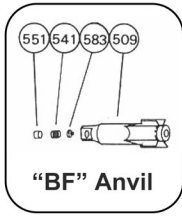
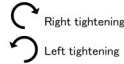
PERCUSSIVE TOOLS

AIR MOTORS

OTHER PRODUCTS

MODELS : FW-10SX-5 & FW-14SX-5

EXPLODED VIEW



FW-10SX-5 & FW-14SX-5

PARTS LIST

Index No.	Parts No.	Parts Name	Qty	Index No.	Parts No.	Parts Name	Qty	Index No.	Parts No.	Parts Name	Qty				
FW-10SX-5															
—	W-240001-01	Housing Cover Ass'y (Rc)		651	W-106651-00	Hanger (Horizontal)	1	—	W-017013-00	Clutch Housing Ass'y					
—	W-240001-02	Housing Cover Ass'y (NPT)		A01	BB-EE3	Ball Bearing	1	501	W-017501-00	Clutch Housing	1				
101	W-240001-51	Housing Cover semi Ass'y	1	A02	BB-EE4	Ball Bearing	1	544	W-017544-00	Clutch Housing Bushing	1				
109	G-028109-00	Throttle Valve Bushing	1	B14	SP-332	Spring Pin	1	201	W-189201-00	Housing	1				
132	W-181132-00	Reverse Valve Bushing	1	C13	O-S14	"O"Ring	1	207	W-125207-00	Rotor	1				
117	G-105117-00	Throttle Valve Spring	1	C15	O-S53	"O"Ring	1	208	W-017208-00	Rotor Blade	6				
121	W-175121-00	Throttle Valve Lever	1	C20	O-S15	"O"Ring	1	209	W-017209-00	Cylinder	1				
124	G-005124-00	Knock Spring	1	D01	CS-520	Cap Screw	4	B31	SP-414	Spring Pin	1				
131	W-181131-00	Reverse Valve	1	D03	CS-516	Cap Screw	4	B32	SP-410	Spring Pin	1				
135	W-188135-00	Reverse Valve Lever	1	E01	SW-5	Spring Washer	4	210	W-017210-00	Cylinder Upper Plate	1				
166	W-181166-00	Reverse Valve Cover	1	E03	SW-5	Spring Washer	4	211	W-017211-00	Cylinder Lower Plate	1				
171	IB-3020S0	Inlet Bushing (Rc)	1	Z01	W-17	Regulator (Rc)	1	250	W-140250-00	Exhaust Cover	1				
	IB-302NS0	Inlet Bushing (NPT)	1	W-17N	Regulator (NPT)	1	503	W-125503-00	Spacer (B)	1					
B01	SP-325	Spring Pin	1	Z50	NP-1039	Name Plate	1	504	W-141504-00	Spacer (C)	1				
B09	SP-318	Spring Pin	1	Z51	NPN-0X3.2	Screw Rivet	2	505	W-141505-02	Cam	1				
C08	O-P8	"O"Ring	1	"BF" Anvil				506	W-141506-02	Hammer Clutch	1				
C09	O-S15	"O"Ring	1	509	W-140509-13	Anvil < BF >	1	507	W-017507-00	Clutch Pin	1				
D77	SS-410D	Set Screw (Dog Point)	1	541	W-224541-00	Button Retainer Spring	1	508	W-017508-01	Clutch Frame	1				
J03	B-3	Ball	1	551	W-224551-00	Plug	1	509	W-017509-D	Anvil < P >	1				
L30	PL-3/8	Plug	1	583	W-224583-00	Retainer Button (F)	1	511	W-017511-00	Clutch Frame Bushing	1				
—	G-028008-00	Throttle Valve Rod Ass'y		FW-14SX-5											
110	H-001110-02	Throttle Valve	1	—	W-189002-01	Housing Cover Ass'y (Rc)		509	W-141509-09	Anvil < BF >	1				
113	G-028113-00	Throttle Valve Rod	1	—	W-189002-02	Housing Cover Ass'y (NPT)		541	W-224541-00	Button Retainer Spring	1				
—	W-027013-00	Clutch Housing Ass'y		101	W-189001-51	Housing Cover SEMI Ass'y	1	551	W-224551-00	Plug	1				
501	W-027501-00	Clutch Housing	1	109	G-028109-00	Throttle Valve Bushing	1	583	W-224583-00	Retainer Button (F)	1				
544	W-027544-00	Clutch Housing Bushing	1	132	W-181132-00	Reverse Valve Bushing	1	"BF" Anvil							
201	W-188201-00	Housing	1	117	G-105117-00	Throttle Valve Spring	1	509	W-141509-09	Anvil < BF >	1				
207	W-133207-00	Rotor	1	121	W-175121-00	Throttle Valve Lever	1	541	W-224541-00	Button Retainer Spring	1				
208	W-027208-00	Rotor Blade	6	124	G-005124-00	Knock Spring	1	551	W-224551-00	Plug	1				
209	W-027209-00	Cylinder	1	131	W-181131-00	Reverse Valve	1	583	W-224583-00	Retainer Button (F)	1				
B31	SP-314	Spring Pin	1	135	W-188135-00	Reverse Valve Lever	1	FW-10SX-5							
B32	SP-38	Spring Pin	1	166	W-181166-00	Reverse Valve Cover	1	—	G-028008-00	Throttle Valve Rod Ass'y					
210	W-027210-00	Cylinder Upper Plate	1	171	IB-3020S0	Inlet Bushing (Rc)	1	110	H-001110-02	Throttle Valve	1				
211	W-027211-00	Cylinder Lower Plate	1		IB-302NS0	Inlet Bushing (NPT)	1	113	G-028113-00	Throttle Valve Rod	1				
250	W-140250-00	Exhaust Cover	1	B01	SP-325	Spring Pin	1	FW-14SX-5							
503	W-027503-00	Spacer (B)	1	B09	SP-318	Spring Pin	1	509	W-141509-09	Anvil < BF >	1				
504	W-140504-00	Spacer (C)	1	C08	O-P8	"O"Ring	1	541	W-224541-00	Button Retainer Spring	1				
505	W-140505-02	Cam	1	C09	O-S15	"O"Ring	1	551	W-224551-00	Plug	1				
506	W-140506-02	Hammer Clutch	1	D77	SS-410D	Set Screw (Dog Point)	1	583	W-224583-00	Retainer Button (F)	1				
507	W-027507-00	Clutch Pin	1	J03	B-3	Ball	1	FW-10SX-5							
508	W-027508-01	Clutch Frame	1	L30	PL-3/8	Plug	1	—	G-028008-00	Throttle Valve Rod Ass'y					
509	W-027509-A	Anvil < P >	1	FW-14SX-5											
511	W-027511-00	Clutch Frame Bushing	1	101	W-189001-51	Housing Cover SEMI Ass'y	1	110	H-001110-02	Throttle Valve	1				
513	W-027513-00	Clutch Housing Cap	1	109	G-028109-00	Throttle Valve Bushing	1	113	G-028113-00	Throttle Valve Rod	1				
621	W-030621-00	Packing (A)	1	132	W-181132-00	Reverse Valve Bushing	1	FW-10SX-5							

- The related parts are shown in thick frame.
- #101, #209 and #509(BF Anvil) are supplied together with parts shown in ().
- Specify parts number and quantity when ordering.