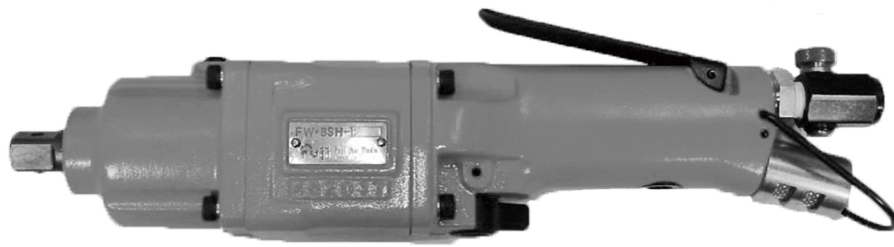


Fuji USER MANUAL

IMPACT WRENCHES

MODELS : FW-8SH-2 & FW-8SCH-2



FW-8SH-2




FW-8SCH-2

SPECIFICATIONS

MODEL	Bolt Size	Square Drive Size	Recommended Torque Range	Max. Torque	Rotational Frequency	Side to Center	Overall Length (without socket)	Mass (without socket)	Air Consumption (At Load)	Air Inlet Thread Size	Air Hose Size
	mm	mm	N·m	N·m	min ⁻¹	mm	mm	kg	m ³ /min		mm
FW-8SH-2	M10	12.7	40~60	75	8,000	27	306	1.7	0.4	PT or NPT1/4	9.5
FW-8SCH-2	M10	12.7	30~50	60	7,500	22	354	2.7	0.4	PT or NPT1/4	9.5

The performance figures are at 0.63MPa (6.3bar).

 Refer to "The Instructions and Warning for Safety Use" enclosed in each tool box.

Fuji Industrial Technique Co.,Ltd.

2-1-14, Kamiji, Higashinari-ku, Osaka, 537-0003 Japan

Tel : 81-6-6972-2335

Fax : 81-6-6972-2380

ASSEMBLY TOOLS

ABRASIVE TOOLS

DRILLS / TAPPERS

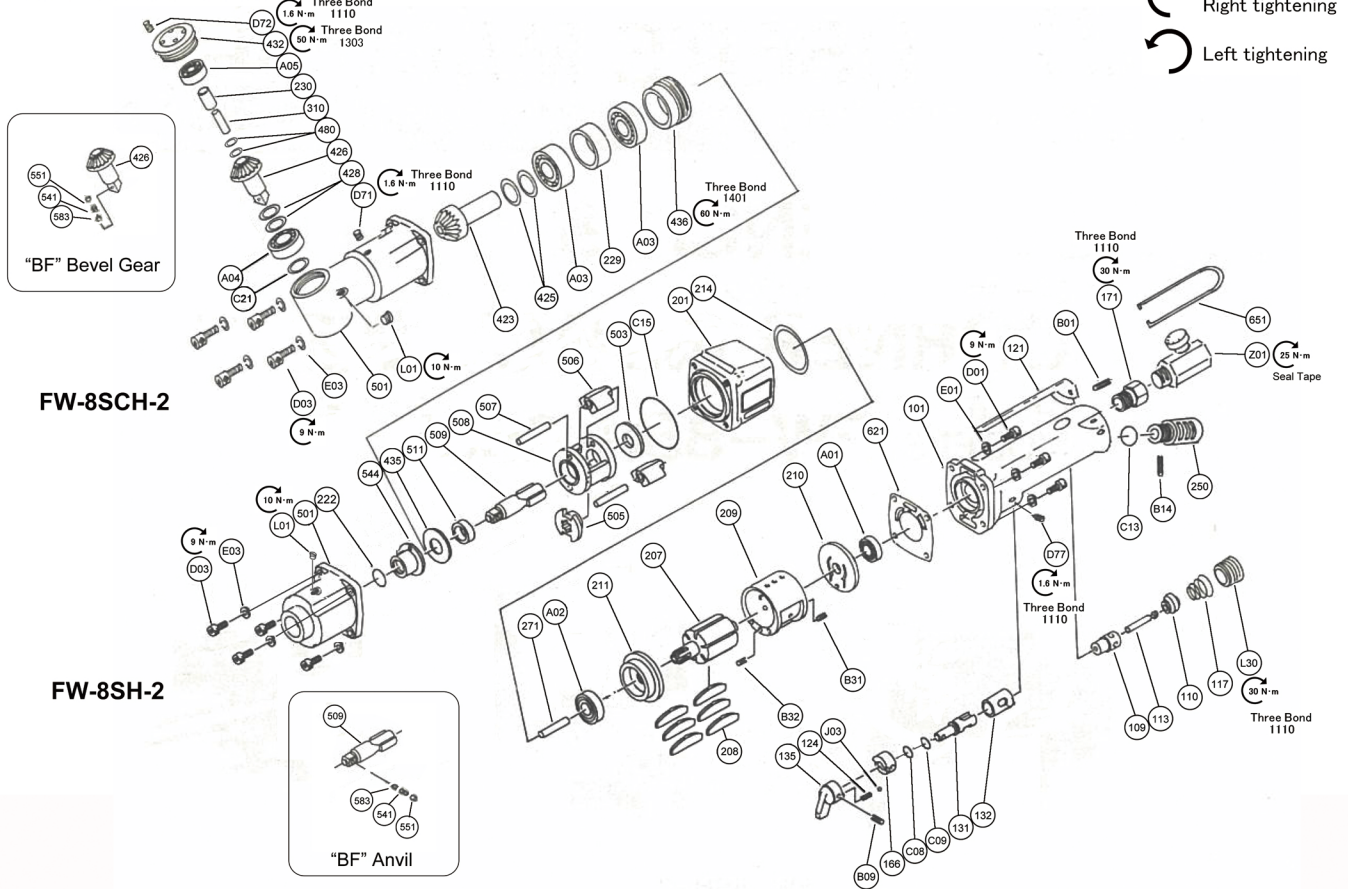
PERCUSSIVE TOOLS

AIR MOTORS

OTHER PRODUCTS

MODELS : FW-8SH-2 & FW-8SCH-2

EXPLODED VIEW



PARTS LIST

Index No.	Parts No.	Parts Name	Qty	Index No.	Parts No.	Parts Name	Qty	Index No.	Parts No.	Parts Name	Qty
FW-8SH-2,FW-8SCH-2				222	W-225222-00	Felt Ring (FW-8SH-2)	1	FW-8SCH-2			
—	W-240001-01	Housing Cover Ass'y <PT>	1	250	W-140250-00	Exhaust Cover	1	The following parts are used only for FW-8SCH-2			
—	W-240001-02	Housing Cover Ass'y <NPT>	1	271	W-225271-00	Rotor Pin	1	229	W-249229-00	Bearing Spacer	1
101	W-240001-51	Housing Cover SEMI Ass'y	1	435	W-225435-00	Thrust Washer	1	230	W-249230-00	Bearing Spacer (B)	1
(109)	G-028109-00	Throttle Valve Bushing	1	501	W-225501-01	Clutch Housing (FW-8SH-2)	1	310	W-249310-00	Spindle Arbor	1
132	W-181132-00	Reverse Valve Bushing	1	503	W-225503-00	Clutch Housing (FW-8SCH-2)	1	423	W-249423-00	Bevel Pinion	1
117	G-105117-00	Throttle Valve Spring	1	506	W-027503-00	Spacer (B)	1	425	W-051425-01	Bevel Pinion Washer	2
121	W-175121-00	Throttle Valve Lever	1	505	W-225505-00	Cam	1	426	W-249426-00	Bevel Gear < P >	1
124	G-005124-00	Knock Spring	1	506	W-225506-00	Hammer Clutch	2	428	W-051428-00	Bevel Gear Washer	2
131	W-181131-00	Reverse Valve	1	507	W-225507-00	Clutch Pin	2	432	W-249432-00	Gear Case Cover	1
135	W-188135-00	Reverse Valve Lever	1	508	W-225508-00	Clutch Frame	1	436	W-249436-00	Bearing Holder	1
166	W-181166-00	Reverse Valve Cover	1	509	W-225509-00	Anvil < P >	1	480	W-249480-00	Thrust Washer (B)	2
171	IB-3020S0	Inlet Joint <PT>	1	511	W-225511-00	Clutch Frame Bushing	1	A03	BB-6905	Ball Bearing	2
	IB-302NS0	Inlet Joint <NPT>	1	544	W225544-00	Clutch Housing Bushing	1	A04	BB-EE5	Ball Bearing	1
B01	SP-325	Spring Pin	1	621	W-240621-00	Packing (A)	1	A05	BB-608	Ball Bearing	1
B09	SP-318	Spring Pin	1	651	W-106651-00	Hanger (Horizontal)	1	C21	O-P16	"O"Ring	1
C08	O-P8	"O"Ring	1	A01	BB-EE3	Ball Bearing	1	D71	SS-45K	Set Screw	1
C09	O-S15	"O"Ring	1	A02	BB-EE4	Ball Bearing	1	D72	SS-48	Set Screw	1
D77	SS-410D	Set Screw	1	B14	SP-332	Spring Pin	1	"BF" Bevel Gear			
J03	B-3	Ball	1	C13	O-S14	"O"Ring	1	426	W-249426-02	Bevel Gear < BF >	1
L30	PL-3/8	Plug	1	C15	O-S50	"O"Ring	1	(541)	W-224541-00	Button Retainer Spring	1
—	G-028008-00	Throttle Valve Rod Ass'y	1	D01	CS-520	Cap Screw	4	551	W-224551-00	Plug	1
110	H-001110-02	Throttle Valve	1	D03	CS-520	Cap Screw	4	(583)	W-224583-00	Retainer Button (F)	1
113	G-028113-00	Throttle Valve Rod	1	E01	SW-5	Spring Washer	4				
201	W-240201-00	Housing	1	E03	SW-5	Spring Washer	4				
207	W-225207-00	Rotor	1	L01	PL-1/8	Plug	1				
208	W-027208-00	Rotor Blade	6	Z01	W-17	Regulator <PT>	1				
209	W-225209-00	Cylinder	1	W-17N	Regulator <NPT>	1					
B31	SP-312	Spring Pin	1	FW-8SH-2							
B32	SP-36	Spring Pin	1	"BF" Anvil							
210	W-225210-00	Cylinder Upper Plate	1	509	W-225509-05	Anvil < BF >	1				
211	W-225211-00	Cylinder Lower Plate	1	(541)	W-224541-00	Button Retainer Spring	1				
214	W-133214-00	Adjusting Washer (Shim)	1	551	W-224551-00	Plug	1				
				(583)	W-224583-00	Retainer Button (F)	1				

- The related parts are shown in thick frame.
- #101 and #509 ("BF" Anvil) are supplied together with parts shown in (). (FW-8SH-2)
- #101 and #426 ("BF" Bevel Gear) are supplied together with parts shown in (). (FW-8SCH-2)
- Specify parts number and quantity when ordering.