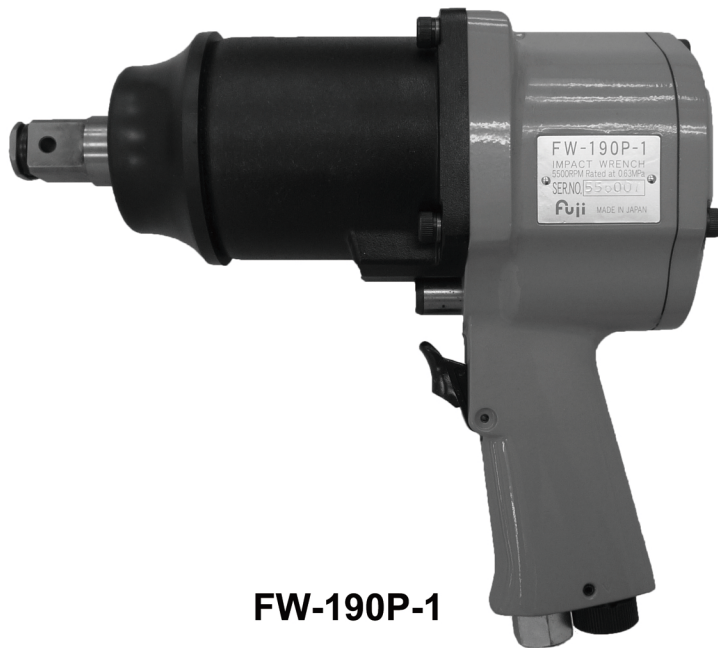


Fuji USER MANUAL

IMPACT WRENCHES

MODELS : FW-190P-1




FW-190P-1

SPECIFICATIONS

MODEL	Bolt Size	Square Drive Size	Recommended Torque Range	Max. Torque (Reverse)	Rotational Frequency	Overall Length (without socket)	Mass (without socket)	Air Consumption (At Load)	Air Inlet Thread Size	Air Hose Size
	mm	mm	N·m	N·m	min ⁻¹	mm	kg	m ³ /min		mm
FW-190P-1	M18~M23	19.0	240~560	620	5,500	241	4.5	0.52	Rc or NPT 1/4	9.5

The performance figures are at 0.63MPa (6.3bar).

 Refer to "The Instructions and Warning for Safety Use" enclosed in each tool box.

Fuji Industrial Technique Co.,Ltd.

2-1-14, Kamiji, Higashinari-ku, Osaka, 537-0003 Japan

Tel : 81-6-6972-2335

Fax : 81-6-6972-2380

ASSEMBLY TOOLS

ABRASIVE TOOLS

DRILLS / TAPPERS

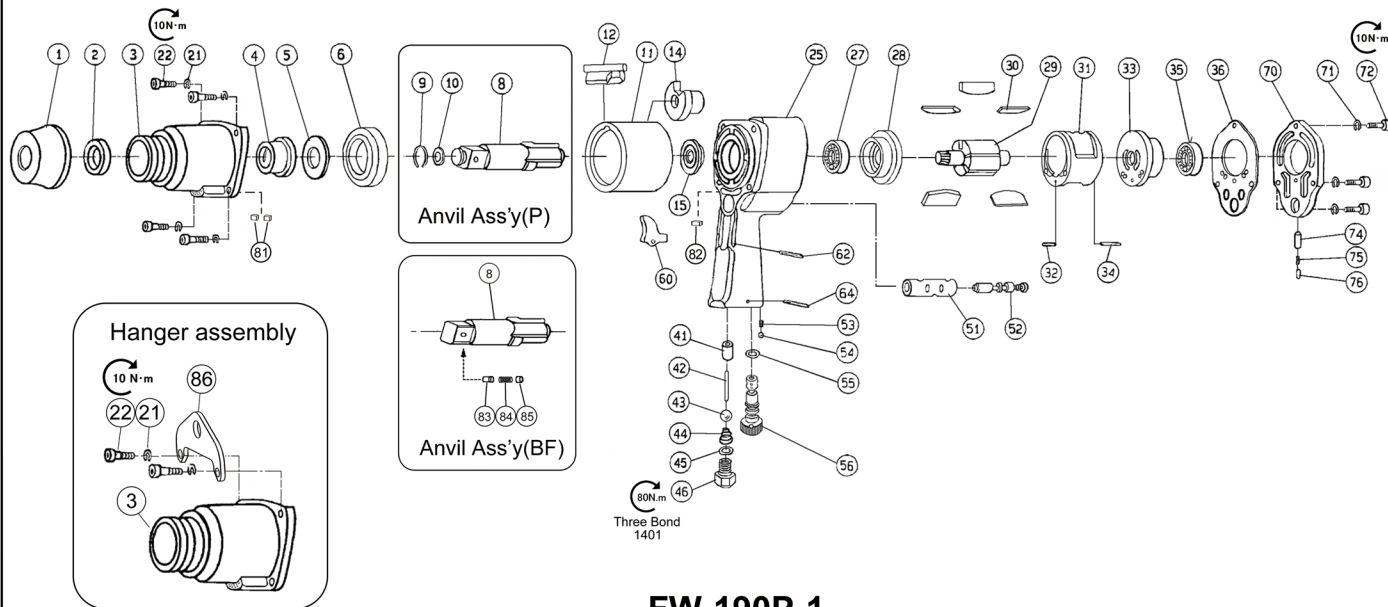
PERCUSSIVE TOOLS

AIR MOTORS

OTHER PRODUCTS

MODLES :FW-190P-1

EXPLODED VIEW



FW-190P-1

PARTS LIST

Index No.	Parts No.	Parts Name	Qty
—	5412104611	Housing Ass'y <Rc>	
—	5412104612	Housing Ass'y <NPT>	
25		Housing	1
41		Throttle Valve Bushing	1
51		Reverse Valve Bushing	1
82		Muffler Pad	1
46	5412104484	Inlet Bushing <Rc>	1
	5412104485	Inlet Bushing <NPT>	1
—	5412104622	THROTTLE VALVE KIT	
42		Throttle Valve Pin	1
43		Throttle Valve	1
44		Throttle Valve Spring	1
45		O-Ring	1
—	5412104623	LEVER KIT	
60		Throttle Valve Lever	1
62		Spring Pin	1
—	5412104488	Clutch Housing Ass'y	
1	5412104437	Clutch Housing Cap	1
2	5412104438	Oil Seal	1
3		Clutch Housing	1
81		Muffler Pad	2
4	5412104440	Hammer Case Bushing	1
—	5412104613	Regulator Ass'y	
53		Knock Spring	1
54		Ball	1
55		O-Ring	1
56		Regulator	1
64		Spring Pin	1
—	5412104487	Cylinder Ass'y	
31		Cylinder	1
32		Spring Pin	1
34		Spring Pin	1
—	5412104489	Anvil Ass'y (P)	
8		Anvil (P)	1
9		Retainer Ring	1
10		O-Ring	1
—	5412104490	Anvil Ass'y (BF)	
8		Anvil (BF)	1
83		Retainer Button (F)	1
84		Button Retainer Spring	1
85		Plug	1

Index No.	Parts No.	Parts Name	Qty
5	5412104441	Thrust Washer	1
6	5412104442	Side Plate	1
11	5412104447	Clutch Frame	1
12	5412104448	Hammer Clutch	1
14	5412104449	Cam	1
15	5412104450	Spacer (B)	1
27	5412104454	Ball Bearing	1
28	5412104455	Cylinder Lower Plate	1
29	5412104456	Rotor	1
33	5412104460	Cylinder Upper Plate	1
35	5412104462	Ball Bearing	1
36	5412104463	Housing Cover Packing	1
52	5412104470	Reverse Valve	1
70	5412104478	Housing Cover	1
(74)		Bushing	1
75	5412104482	Knock Spring	1
76	5412104483	Knock Pin	1
—	5412104636	Name Plate	1
—	5412104630	Rotational Direction Label	1
—	5412060277	Warning Sticker	1
30	5412104457	BLADE SET (Set of 5)	1
—	5412104624	SCREW KIT	
21		Spring Washer	4
22		Cap Screw	4
71		Spring Washer	3
72		Cap Screw	3
—	5412104625	ANVIL(P) PARTS KIT	
9		Retainer Ring	5
10		O-Ring	5
—	5412104626	ANVIL(BF) PARTS KIT	
83		Retainer Button (F)	1
84		Button Retainer Spring	1
85		Plug	1
—	5412104627	SMALL PARTS KIT	
32		Spring Pin	1
34		Spring Pin	1
53		Reverse Valve Spring	1
54		Ball	1
62		Spring Pin	1
64		Spring Pin	1
75		Spring	1
76		Pin	1
—	5412104491	TUNE UP KIT	
		2, 9, 10, 30, 36, 45, 55	

- Specify parts number and quantity when ordering.
- Spare parts without part number are not sold separately.
- The related parts are shown in thick frame.
- #70 is supplied together with parts shown in ().

Standard Accessory

Index No.	AC No.	Description	Qty
86	5412104762	Hanger	1