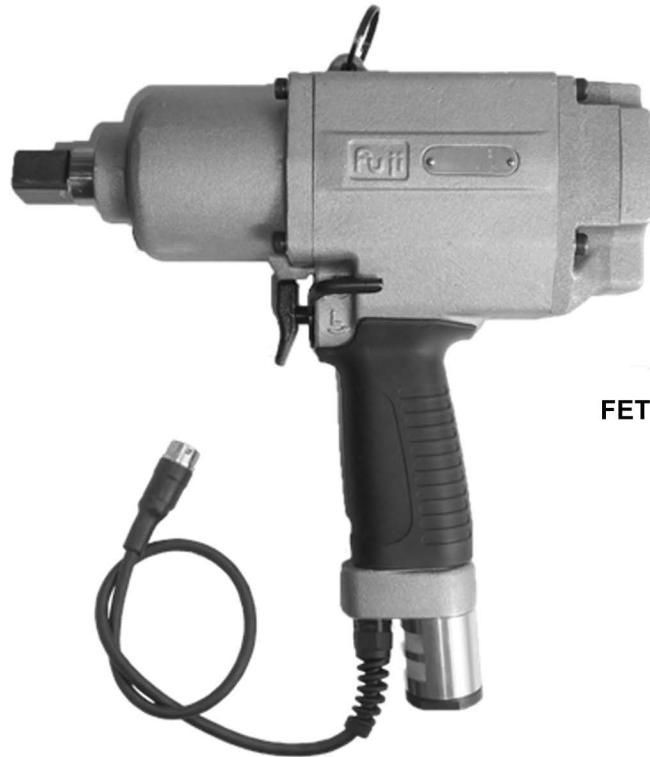


# Fuji USER MANUAL

## F1 SHUT WRENCHES

MODEL : FET-16-1



FET-16-1

### SPECIFICATIONS

Model	Bolt Size	Recommended Torque Range (0.4~0.63MPa)	Rotational Frequency	Square Drive Size	Air Consumption (At Load)	Mass (without socket)	Overall Length (without socket)	Air Inlet Thread Size	Air Hose Size
	mm	N·m	min <sup>-1</sup>	mm	m <sup>3</sup> /min	kg	mm		mm
FET-16-1	M16~M18	150~210	3,000	19	1.2	4.4	262	Rc 3/8	9.5

The performance figures are at 0.63MPa (6.3bar).

 Refer to "The Instructions and Warning for Safety Use" enclosed in each tool box.

Fuji Industrial Technique Co.,Ltd.

2-1-14, Kamiji, Higashinari-ku, Osaka, 537-0003 Japan

Tel : 81-6-6972-2335

Fax : 81-6-6972-2380

ASSEMBLY TOOLS

ABRASIVE TOOLS

DRILLS / TAPPERS

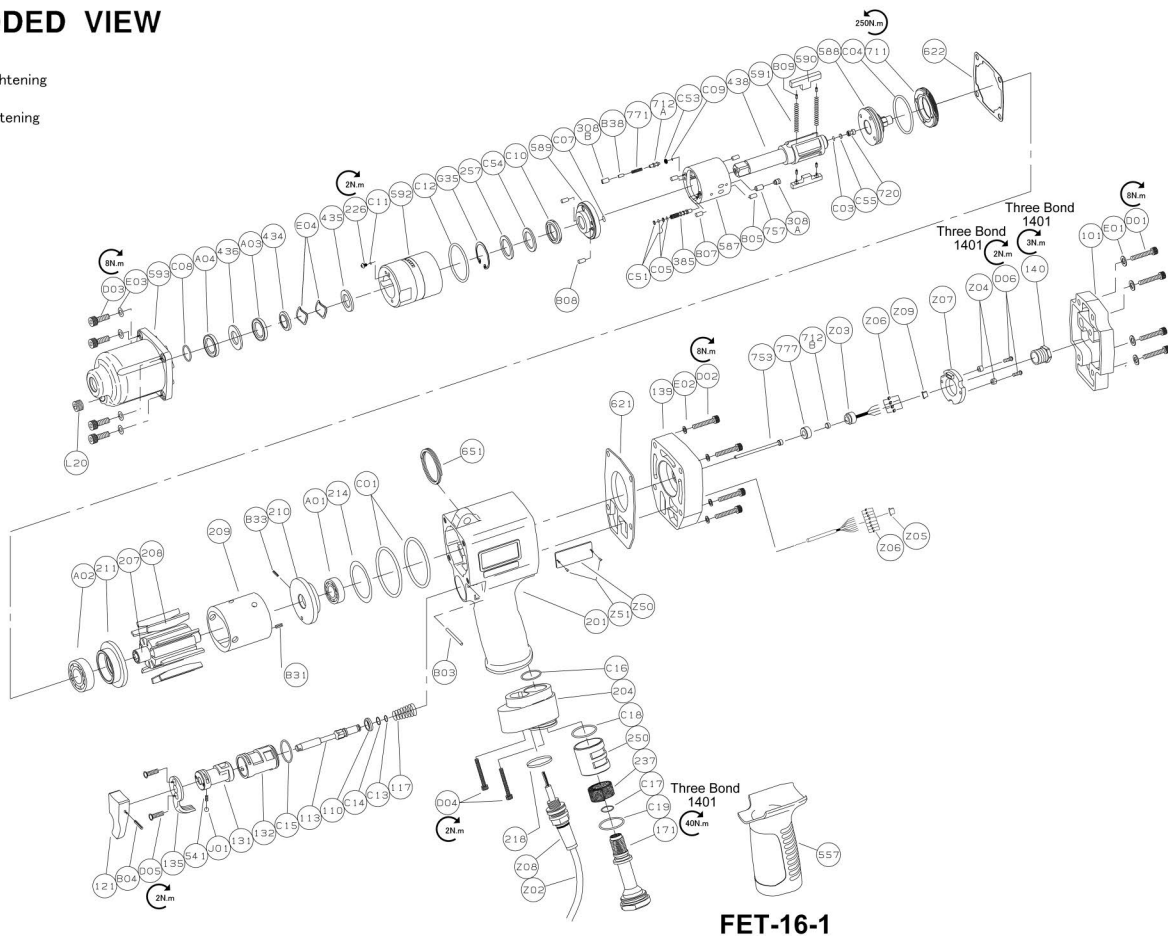
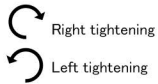
PERCUSSIVE TOOLS

AIR MOTORS

OTHER PRODUCTS

# MODEL : FET-16-1

## EXPLODED VIEW



## PARTS LIST

Index No.	Parts No.	Parts Name	Qty	Index No.	Parts No.	Parts Name	Qty	Index No.	Parts No.	Parts Name	Qty
<b>FET-16-1</b>											
—	W-377006-00	Housing Ass'y		226	W-281226-00	Oil Plug	1	211	W-341211-00	Cylinder Lower Plate	1
110	W-341110-00	Throttle Valve	1	257	W-341257-00	Washer	1	214	W-341214-00	Adjusting Washer (Shim)	1
113	W-341113-00	Throttle Valve Rod	1	308A	W-283308-00	Spacer	1	434	W-377434-00	Bearing Washer	1
117	W-282117-01	Throttle Valve Spring	1	308B	W-377308-00	Spacer	1	435	W-341435-00	Thrust Washer	1
121	W-283121-00	Throttle Valve Lever	1	385	W-341385-00	Adjusting Screw	1	621	W-377621-01	Packing (A)	1
131	W-341131-00	Reverse Valve	1	438	W-341438-00	Spindle	1	622	W-341622-00	Packing (B)	1
132	W-341132-00	Reverse Valve Bushing	1	587	W-377587-00	Oil Cylinder	1	651	W-181651-00	Hanger (Horizontal)	1
135	W-341135-01	Reverse Valve Lever	1	588	W-377588-00	Oil Cylinder Upper Plate	1	712A	W-300712-00	Damper	1
171	W-341171-00	Inlet Joint	1	589	W-377589-00	Oil Cylinder Lower Plate	1	753	W-377753-00	Piston Rod	1
201	W-377201-00	Housing	1	590	W-341590-00	Cylinder Blade	2	777	W-300777-00	Collar	1
204	W-377204-00	Housing Lower Cover	1	(B09)	SP-36	Spring Pin	2	A01	BB-6003	Ball Bearing	1
218	W-377218-00	Packing	1	591	W-341591-00	Blade Spring	2	A02	BB-6004	Ball Bearing	1
237	W-341237-00	Muffler Pad	1	592	W-341592-00	Cylinder Case	1	D01	CS-514	Cap Screw	4
250	W-341250-00	Exhaust Cover	1	711	W-341711-00	Cylinder Cover	1	D02	CS-516	Cap Screw	4
541	W-252541-00	Button Retainer Spring	1	712B	W-373712-00	Damper	1	D03	CS-520	Cap Screw	4
557	W-341557-00	Protector	1	720	W-300720-00	Piston	1	D06	CS-310B	Button Head Cap Screw	2
B03	GP-2.532GLC	Grooved Pin	1	757	W-224757-00	Needle	1	E01	PW-5K	Washer (small type)	4
B04	SP-212	Spring Pin	1	771	W-373771-00	Spring	1	E02	PW-5K	Washer (small type)	4
C01	O-S67	"O" Ring	2	B05	NR-3.56	Needle Roller	2	E03	PW-5K	Washer (small type)	4
C13	O-S4	"O" Ring	1	B07	NR-3.56	Needle Roller	2	E04	WW-25	Wave Washer	2
C14	O-P5	"O" Ring	1	B08	GP-36GCH	Grooved Pin	2	Z03		Pressure Sensor	1
C15	O-S24	"O" Ring	1	B38	NR-314	Needle Roller	1	Z09	OMN-0017	Housing	1
C16	O-S20	"O" Ring	1	C03	O-S2.5F(H)	"O" Ring (HNBR80)	1	Z06		Contact	4
C17	O-S15	"O" Ring	1	C04	O-S46(H)	"O" Ring (HNBR80)	1	Z04	SPA-0001	Spacer	2
C18	O-S25	"O" Ring	1	C05	O-S3(H)	"O" Ring (HNBR80)	2	Z07		PC Board	1
C19	O-S25	"O" Ring	1	C07	O-S6(H)	"O" Ring (HNBR80)	1				
D04	CS-340	Cap Screw	2	C09	O-S2.5F(H)	"O" Ring (HNBR80)	1				
D05	CS-36S	Flat Head Cap Screw	2	C10	O-X215(H)	"O" Ring (HNBR80)	1				
J01	B-3	Steel Ball	1	C11	O-S3(H)	"O" Ring (HNBR80)	1				
Z08	IZL-0003	Cable Protector	1	C12	O-47X1.6(H)	"O" Ring (HNBR80)	1				
Z50	NP-8010	Screw Rivet	1	C51	BR-S3FT2	Back-Up Ring	2				
Z51	NPN-0X3.2	Warning Sticker	2	C53	BR-S3FT2	Back-Up Ring	1				
—	5412104145	Cable Kit		C54	BR-215F	Back-Up Ring	1				
Z02		Cable Ass'y	1	C55	BR-S2.5FT2	Back-Up Ring	1				
Z05	OMN-0018	Housing	1	G35	SR-RA32	Snap Ring	1				
Z06		Contact	8	101	W-377101-00	Housing Cover	1				
—	W-377033-00	Front Case Ass'y		139	W-377139-00	Housing Cover (B)	1				
436	W-377436-00	Bearing Holder	1	140	W-377140-00	Cup Nut	1				
593	W-377593-00	Front Case	1	207	W-341207-00	Rotor	1				
A03	BB-6705	Ball Bearing	1	208	W-341208-00	Rotor Blade	9				
A04	BB-6705	Ball Bearing	1	209	W-341209-00	Cylinder	1				
C08	O-S25	"O" Ring	1	(B31)	SP-410	Spring Pin	1				
L20	PL-1/8	Plug	1	210	W-341210-00	Cylinder Upper Plate	1				
				(B33)	SP-26	Spring Pin	1				

- The related parts are shown in a thick frame.
- #209, #210, #590 and #203 are supplied together with parts shown in ( ).
- Special tool is necessary for Cable Kit and #203  
please contact your Fuji representative.
- For repair / replacement of electronic parts (#207)  
please contact your Fuji representative.
- Specify parts number and quantity when ordering.

### Standard Accessories

AC No.	Description	Qty
F-705	5mm Hex. Pin Wrench	1
F-712-2	2mm Hex. Pin Wrench	1