

Fuji USER MANUAL

IMPACT WRENCHES


MODELS : FW-330-1,-1L



FW-330-1



FW-330-1L

 Refer to " The instructions and Warning for Safety Use " enclosed in each tool box.

SPECIFICATIONS

MODEL	Clutch type	Bolt Size	Square Drive Size	Recommended Torque Range	Max. Torque (Reverse)	Rotational Frequency	Air Consumption (At Load)	Overall Length (without socket)	Mass (without socket)	Air Inlet Thread Size	Air Hose Size
		mm	mm	N·m	N·m	min ⁻¹	m ³ /min	mm	kg	PT 1/2	mm
FW-330-1	Pinless	M30~M36	25.4	500~2,100	2,600	5,000	1.15	366	10.7	PT 1/2	12.7
FW-330-1L	Pinless	M30~M36	25.4	500~2,100	2,600	5,000	1.15	522	12.2	PT 1/2	12.7

※ The performance figures are at 0.63MPa(6.3bar).

※ Oil bath type. Check clutch oil once each month. Use 2.5oz.(75ml) of SAE#5W-30 oil or equivalent.

Fuji Industrial Technique Co.,Ltd.

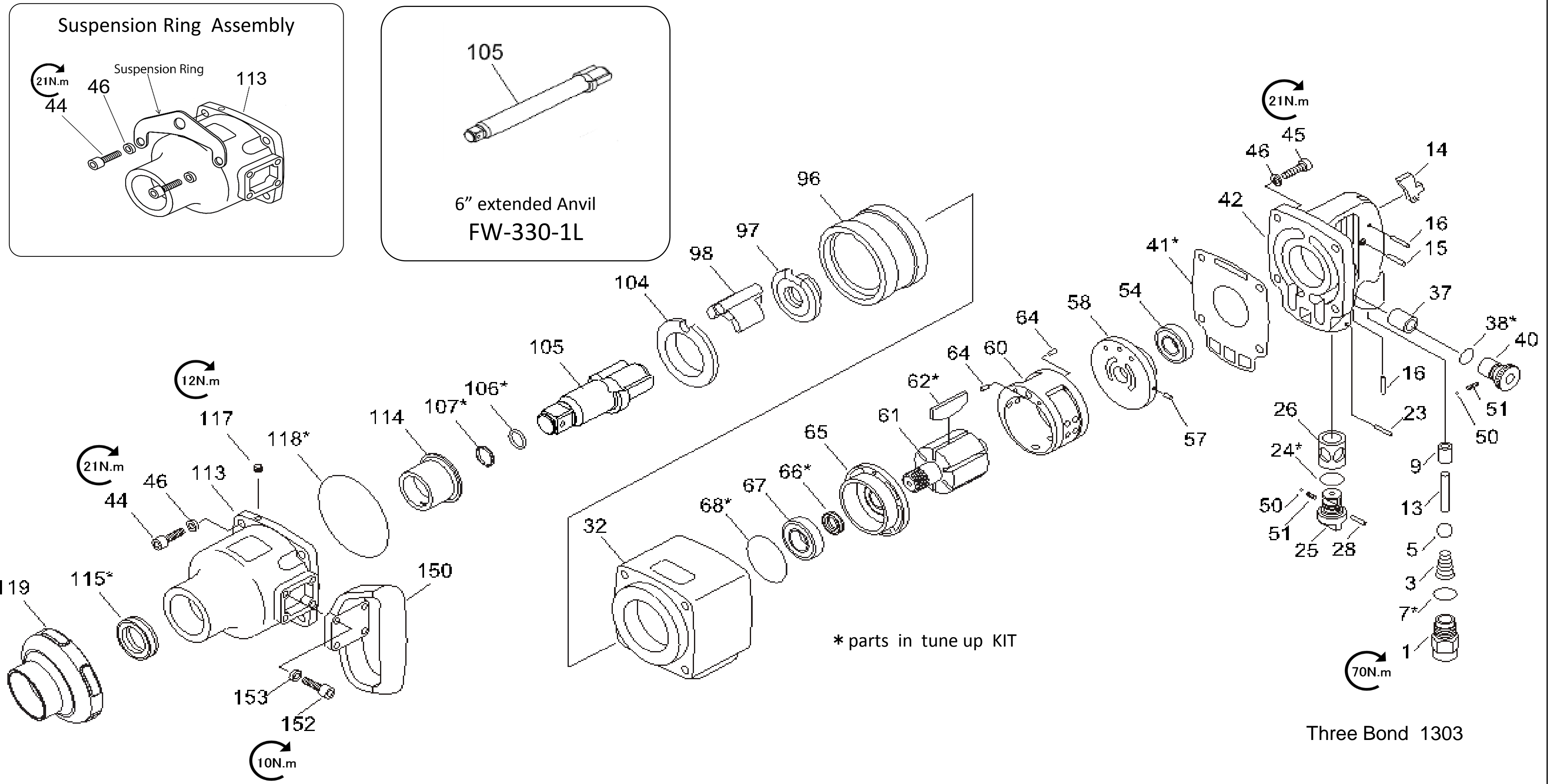
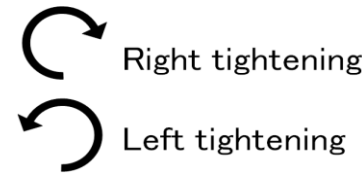
2-1-14, Kamiji, Higashinari-ku, Osaka, 537-0003 Japan

Tel : 81-6-6972-2335

Fax : 81-6-6972-2380

MODELS :FW-330-1,-1L

EXPLODED VIEW



FW-330-1,-1L

PARTS LIST

Index No.	Parts No.	Parts Name	Qty	Index No.	Parts No.	Parts Name	Qty	Index No.	Parts No.	Parts Name	Qty
A	5412104124	HANDLE Ass'y (Incl: Kit No. A1, A2, A3, A4)		E	5412104132	CLUTCH KIT		OTHER PARTS AND SETS			
1	5412104148	Inlet Bushing (PT)	1	96		Cage	1	32	5412104116	Housing - Motor	1
<u>41</u>	8940162172	Gasket - Handle	1	<u>97</u>	8940162187	Cam	1	60	8940162182	Liner	1
42	5412104118	Handle SEMI Ass'y (Incl: Index No. 9, 26, 37)	1	<u>98</u>	8940162188	Dog	1	61	2050553153	Rotor	1
9		Bushing-Throttle Valve	1	<u>104</u>	2050553193	Bushing-Cage	1	<u>62</u>	8940162181	Blades (Set of 6)	1
26		Bushing - Reverse Valve	1	F	2050554083	ANVIL Ass'y (Incl: Kit No. F1) For FW-330-1		119	2050554943	Protective cover	1
37		Bushing - Regulator Valve	1	<u>105</u>		Anvil	1	—	5412104113	Name Plate	1
45		Screw	4	F1	5412104133	SOCKET RETAINER KIT		—	5412060277	Warning label	1
46		Lock Washer	4	<u>106</u>		O-Ring	1		5412104144	TUNE UP KIT	
A1	5412104139	THROTTLE VALVE KIT		<u>107</u>		Ring-Friction	1	7, 24, 38, 41, 62, 66, 68, 106, 107, 115, 118			
3		Spring-Throttle Valve	1	F	5412104122	ANVIL Ass'y (Incl: Kit No. F1) For FW-330-1L					
5		Valve-Throttle	1	<u>105</u>		Anvil(6" extended anvil)	1				
<u>7</u>		O-ring	1	F1	5412104133	SOCKET RETAINER KIT					
9		Bushing-Throttle Valve	1	<u>106</u>		O-Ring	1				
13		Plunger - Throttle Valve	1	<u>107</u>		Ring-Friction	1				
A2	5412104164	TRIGGER KIT		G	5412104134	CLUTCH HOUSING KIT					
14		Lever - Throttle	1	44		Screw	4				
15		Pin - Throttle Lever	1	46		Lock Washer	4				
16		Pin - Lever Stop	1	113		Clutch Housing Ass'y (Incl: Item No. 114, 115)	1				
A3	5412104141	REVERSE VALVE KIT		114		Bushing-Clutch Housing	1				
23		Pin - Lever Stop	1	<u>115</u>		Oil seal	1				
<u>24</u>		O-Ring	1	<u>117</u>		Oil plug	1				
25		Valve-Reverse	1	118		O ring	1				
28		Pin	1	H	5412104135	SUPPORT HANDLE KIT					
50		Ball	1	150		Handle - Support Black Painted	1				
51		Spring	1	152		Screw	4				
A4	5412104142	REGULATOR KIT		153		Lock Washer	4				
16		Pin - Lever Stop	1	I	5412104136	SCREWS KIT					
<u>38</u>		O-Ring	1	44		Screw	4				
40		Valve - Regulator	1	45		Screw	4				
50		Ball	1	46		Lock Washer	8				
51		Spring	1	152		Screw	4				
C	5412104130	REAR ENDPLATE KIT		153		Lock Washer	4				
54	8940162177	Bearing	1	J	5412104143	SMALL PARTS KIT					
57		Pin	1	<u>5</u>		Valve - Throttle	1				
58		Plate - Rear End	1	15		Pin - Throttle Lever	1				
64		Pin	1	16		Pin - Lever Stop	2				
D	5412104131	FRONT ENDPLATE KIT		23		Pin	1				
64		Pin	1	28		Pin	1				
65		Plate-Front End	1	50		Ball	2				
<u>66</u>		Oil seal	1	51		Spring	2				
67	8940162185	Bearing	1	57		Pin	1				
<u>68</u>		O ring	1	64		Pin	2				

- #9 is one in HANDLE Ass'y .
- Spare parts without part number are not sold separately.
- High wear parts are underlined.

■ Standard Accessories

AC No.	Description	Qty
5412104190	L-wrench	1
8940166788	Suspension Ring	1