

F1 SHUT WRENCHES

MODEL : FET-11-1



FET-11-1

SPECIFICATIONS

Model	Bolt Size	Recommended Torque Range	Rotational Frequency	Square Drive Size	Air Consumption (At Load)	Mass (without socket)	Overall Length (without socket)	Air Inlet Thread Size	Air Hose Size
		(0.4~0.63MPa)							mm
	mm	N·m	min ⁻¹	mm	m ³ /min	kg	mm	Rc1/4	mm
FET-11-1	M10~M12	70~130	5,000	12.7	0.80	2.00	207	Rc1/4	9.5

The performance figures are at 0.63MPa (6.3bar).

 Refer to "The Instructions and Warning for Safety Use" enclosed in each tool box.

Fuji Industrial Technique Co.,Ltd.

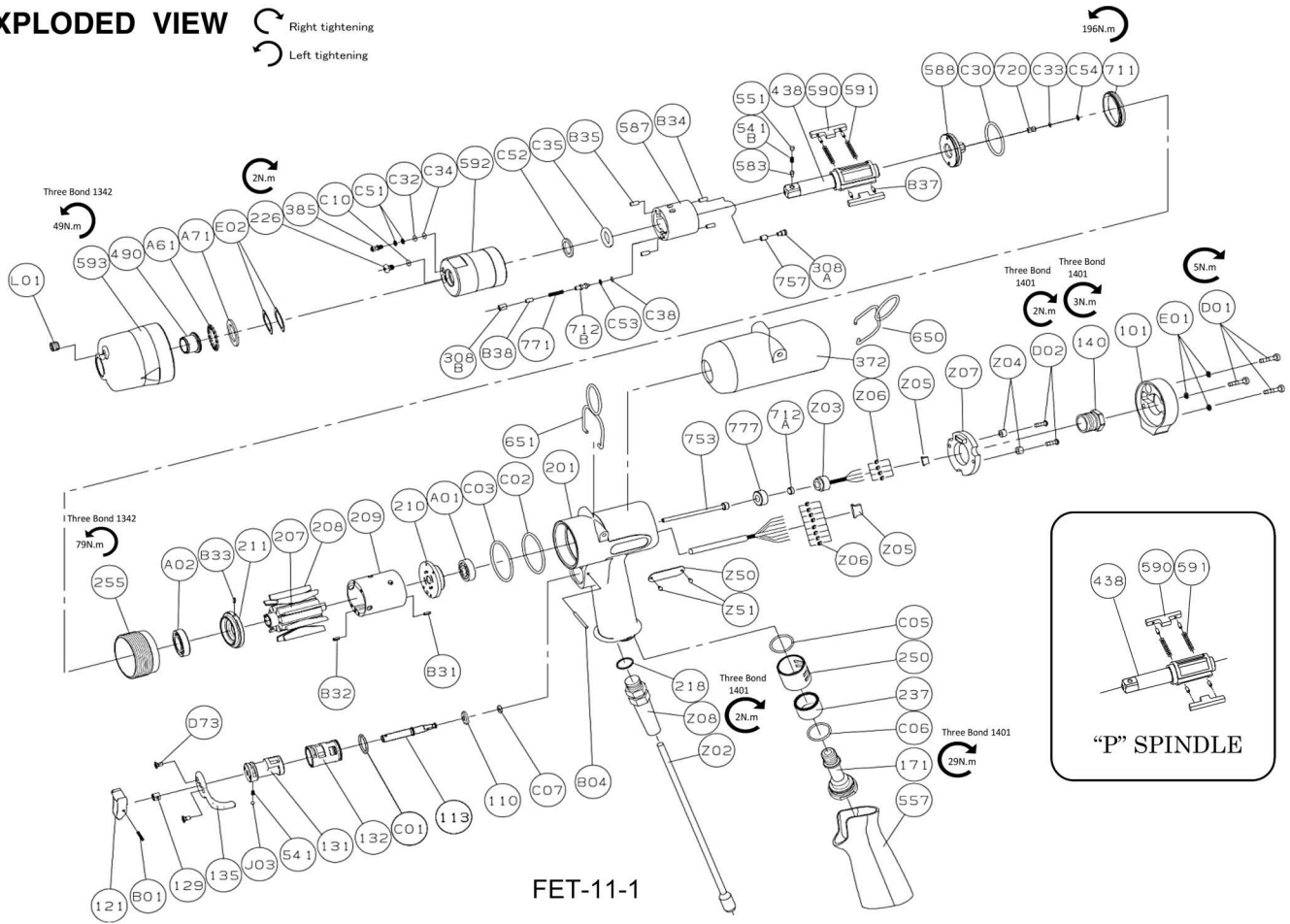
2-1-14, Kamiji, Higashinari-ku, Osaka, 537-0003 Japan

Tel : 81-6-6972-2335

Fax : 81-6-6972-2380

MODEL : FET-11-1

EXPLODED VIEW



PARTS LIST

Index No.	Parts No.	Parts Name	Qty	Index No.	Parts No.	Parts Name	Qty	Index No.	Parts No.	Parts Name	Qty
FET-11-1											
-	W-391006-00	Housing Assy		587	W-384587-00	Oil Cylinder	1	A61	NB-NTB1624NE	Thrust Needle Bearing	1
110	W-372110-00	Throttle Valve	1	588	W-391588-00	Oil Cylinder Upper Plate	1	A71	TW-AS1624E	Thrust Washer	1
113	W-372113-00	Throttle Valve Rod	1	590	W-374590-00	Spindle Blade	2	D01	CS-420	Cap Screw	3
121	W-254121-00	Throttle Valve Lever	1	(B37)	SP-2.55	Spring Pin	4	D02	CS-310B	Button Head Cap Screw	2
129	W-372129-00	Throttle Valve Rod Bushing	1	591	W-374591-00	Blade Spring	2	E01	SW-4	Wave Washer	3
131	W-374131-00	Reverse Valve	1	592	W-384592-00	Cylinder Case	1	E03	WW-16	Wave Washer	2
132	W-282132-01	Reverse Valve Bushing	1	711	W-374711-00	Cylinder Cover	1	Z03	NP-0017	Pressure Sensor	1
135	W-374135-00	Reverse Valve Lever	1	712B	W-379712-00	Damper	1	Z05	OMN-0017	Housing	1
171	W-374171-00	Inlet Joint	1	720	W-389720-00	Piston	1	Z06		Contact	4
201	W-391201-00	Housing	1	757	W-282757-00	Needle	1	Z04	SPA-0001	Spacer	2
218	W-377218-00	Packing	1	771	W-373771-00	Spring	1	Z07		PC Board	1
237	W-374237-00	Muffler Pad	1	B34	NR-3.057	Needle Roller	2	Z50	NP-8014	Name Plate	1
250	W-283250-01	Exhaust Cover	1	B35	NR-3.057	Needle Roller	2	Z51	NPN-0X3.2	Screw Rivet	2
541	W-252541-00	Button Retainer Spring	1	B38	NR-314	Needle Roller	1	NP-0740		Warning Sticker	1
557	W-371557-00	Protector	1	C10	O-S2.5F(H)	"O" Ring (HNBR80)	1	-	W-391021-00	Oil Cylinder Ass'y <P>	
B01	SP-212	Spring Pin	1	C30	O-S40(H)	"O" Ring (HNBR80)	1	438	W-384438-00	Spindle <P>	1
B04	GP-226GLC	Grooved Pin	1	C32	O-S2F(H)	"O" Ring (HNBR80)	1				
C01	O-S17	"O" Ring	1	C33	O-S2.5F(H)	"O" Ring (HNBR80)	1				
C02	O-S46	"O" Ring	1	C34	O-S3(H)	"O" Ring (HNBR80)	1				
C03	O-S46	"O" Ring	1	C35	O-KX16(H)	"X" Ring (HNBR80)	1				
C05	O-S22	"O" Ring	1	C38	O-S2.5F(H)	"O" Ring (HNBR80)	1				
C06	O-S22	"O" Ring	1	C51	BR-S2.5FT2	Back-Up Ring	2				
C07	O-568-0004	"O" Ring	1	C52	BR-115	Back-Up Ring	1				
D73	CS-36S	Set Screw(Dog Point)	1	C53	BR-S3FT2	Back-Up Ring	1				
J03	B-3	Steel Ball	1	C54	BR-S2.5FT2	Back-Up Ring	1				
Z08	IZL-0003	Cable Protector	1	101	W-391101-00	Housing Cover	1				
-	5412104145	Cable Kit		140	W-377140-00	Cup Nut	1				
Z02		Cable Ass'y	1	207	W-374207-00	Rotor	1				
Z05	OMN-0018	Housing	1	208	W-374208-00	Rotor Blade	9				
Z06		Contact	8	209	W-384209-00	Cylinder	1				
-	W-391033-00	Front Case Ass'y		(B31)	SP-2.56	Spring Pin	1				
490	W-373490-00	Spindle Bushing	1	(B32)	SP-2.56	Spring Pin	1				
593	W-391593-00	Front Case	1	210	W-374210-00	Cylinder Upper Plate	1				
L01	PL-1/16	Plug	1	211	W-374211-00	Cylinder Lower Plate	1				
-	W-391021-01	Oil Cylinder Ass'y <BF>		(B33)	SP-1.56	Spring Pin	1				
226	W-371226-00	Oil Plug	1	255	W-384255-00	Motor Fastening Nut	1				
308A	W-281308-00	Spacer	1	372	W-391372-00	Plastic Cover	1				
308B	W-374308-00	Spacer	1	650	W-390650-00	Hanger (Vertical)	1				
385	W-384385-00	Adjusting Screw	1	651	W-371651-00	Hanger (Horizontal)	1				
438	W-384438-01	Spindle <BF>	1	712A	W-300712-00	Damper	1				
541B*	W-224541-00	Button Retainer Spring	1	753	W-391753-00	Piston Rod	1				
551*	W-224551-00	Plug	1	777	W-300777-00	Collar	1				
583*	W-224583-00	Retainer Button (F)	1	A01	BB-6900	Ball Bearing	1				
				A02	BB-6902ZZ	Ball Bearing	1				

* These parts are for "BF" only.

- The related parts are shown in a thick frame.
- #209 #211 #590 and #203 are supplied together with parts shown in ().
- Special tool is necessary for Cable Kit and #Z03 please contact your Fuji representative.
- For repair / replacement of electronic parts(#Z07) please contact your Fuji representative.
- Specify parts number and quantity when ordering.

Standard Accessories

AC No.	Description	Qty
F-701-1	1.5mm Hex. Pin Wrench	1
F-704	4mm Hex. Pin Wrench	1