

F1 SHUT WRENCHES

MODEL : FET-7-1

FET-7-1



SPECIFICATIONS

Model	Bolt Size	Recommended Torque Range (0.4~0.63MPa)	Rotational Frequency	Square Drive Size	Air Consumption (At Load)	Mass (without socket)	Overall Length (without socket)	Air Inlet Thread Size	Air Hose Size
	mm	N·m	min ⁻¹	mm	m ³ /min	kg	mm		mm
FET-7-1	M8~M10	30~60	6,100	9.5	0.60	1.2	177	Rc 1/4	9.5

The performance figures are at 0.63MPa (6.3bar).

 Refer to "The Instructions and Warning for Safety Use" enclosed in each tool box.

Fuji Industrial Technique Co.,Ltd.

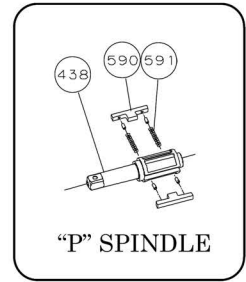
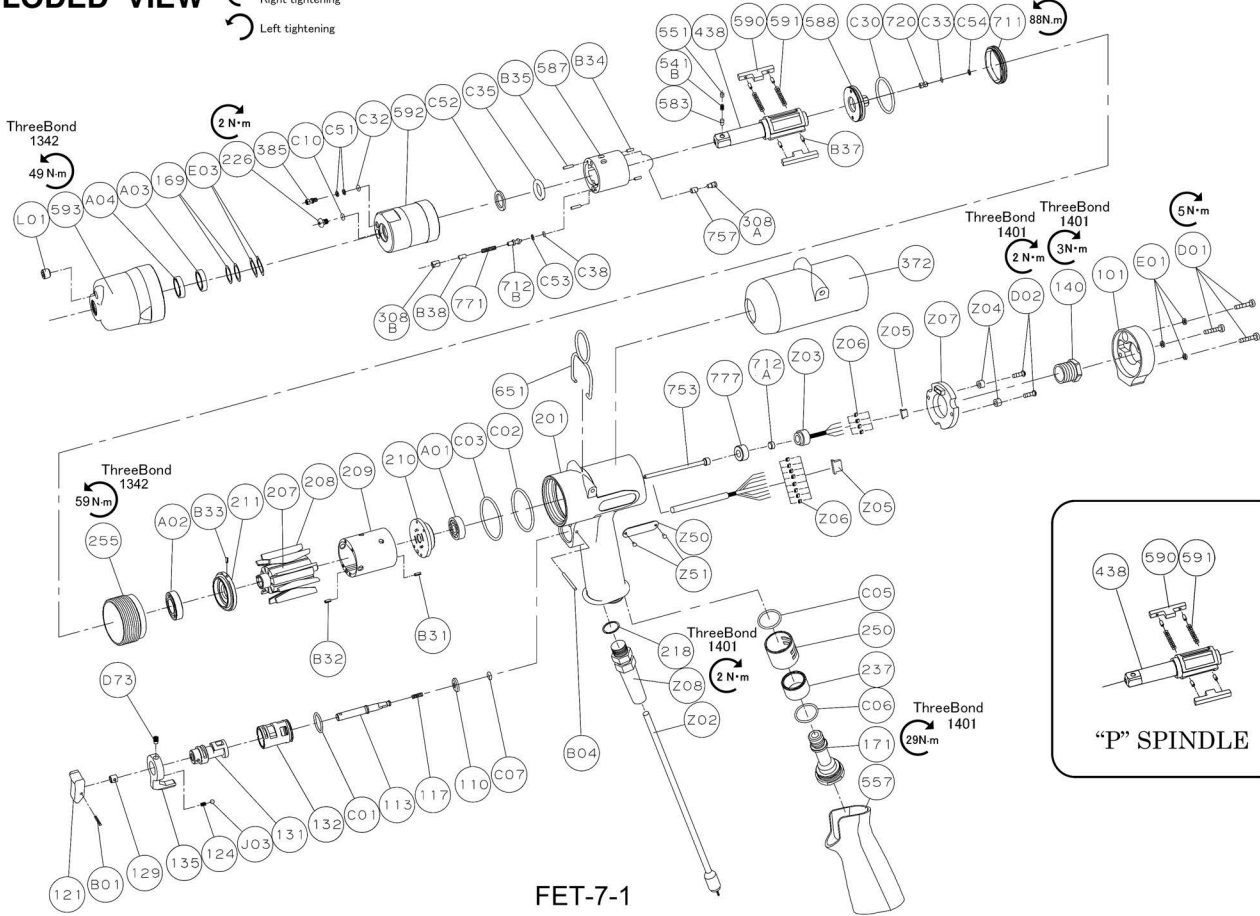
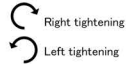
2-1-14, Kamiji, Higashinari-ku, Osaka, 537-0003 Japan

Tel : 81-6-6972-2335

Fax : 81-6-6972-2380

MODEL : FET-7-1

EXPLODED VIEW



FET-7-1

PARTS LIST

Index No.	Parts No.	Parts Name	Qty	Index No.	Parts No.	Parts Name	Qty	Index No.	Parts No.	Parts Name	Qty
FET-7-1											
-	W-389006-00	Housing Ass'y		587	W-382587-00	Oil Cylinder	1	E03	WW-12	Wave Washer	2
110	W-372110-00	Throttle Valve	1	588	W-389588-00	Oil Cylinder Upper Plate	1	Z03		Pressure Sensor	1
113	W-372113-00	Throttle Valve Rod	1	590	W-372590-00	Spindle Blade	2	(Z05)	OMN-0017	Housing	1
117	W-372117-00	Throttle Valve Spring	1	(B37)	SP-25	Spring Pin	4	(Z06)		Contact	4
121	W-254121-00	Throttle Valve Lever	1	591	W-372591-00	Blade Spring	2	Z04	SPA-0001	Spacer	2
124	W-254124-00	Knock Spring	1	592	W-382592-00	Cylinder Case	1	Z07		PC Board	1
129	W-372129-00	Throttle Valve Rod Bushing	1	711	W-372711-00	Cylinder Cover	1	Z50	NP-8012	Name Plate	1
131	W-372131-00	Reverse Valve	1	712B	W-371712-00	Damper	1	Z51	NPN-0X3.2	Screw Rivet	2
132	W-372132-00	Reverse Valve Bushing	1	720	W-389720-00	Piston	1	Z05	NP-0740	Warning Sticker	1
135	W-254135-00	Reverse Valve Lever	1	757	W-382757-00	Needle	1	Z06			
171	W-371171-00	Inlet Joint	1	771	W-372771-00	Spring	1	Z07			
201	W-389201-00	Housing	1	B34	NR-2.56	Needle Roller	2	Z08			
218	W-377218-00	Packing	1	B35	NR-2.56	Needle Roller	2	Z09			
237	W-302237-00	Muffler Pad	1	B38	NR-39.8	Needle Roller	1	C05			
250	W-302250-00	Exhaust Cover	1	C10	O-S2.5F(H)	"O" Ring (HNBR80)	1	C06			
557	W-371557-00	Protector	1	C30	O-S30(H)	"O" Ring (HNBR80)	1	C07			
B01	SP-212	Spring Pin	1	C32	O-S2F(H)	"O" Ring (HNBR80)	1				
B04	GP-224GLC	Grooved Pin	1	C33	O-S2.5F(H)	"O" Ring (HNBR80)	1				
C01	O-S15	"O" Ring	1	C35	O-KX12(H)	"X"Ring (HNBR80)	1				
C02	O-S36	"O" Ring	1	C38	O-S1.4F(H)	"O" Ring (HNBR80)	1				
C03	O-S36	"O" Ring	1	C51	BR-S2.5FT2	Back-Up Ring	2				
C05	O-S18	"O" Ring	1	C52	BR-112	Back-Up Ring	1				
C06	O-S18	"O" リング	1	C53	BR-S2.5FT2	Back-Up Ring	1				
C07	O-568-0004	"O" Ring	1	C54	BR-S2.5FT2	Back-Up Ring	1				
D73	SS-46D	Set Screw(Dog Point)	1	101	W-389101-00	Housing Cover	1				
J03	B-3	Steel Ball	1	140	W-377140-00	Cup Nut	1				
Z08	IZL-0003	Cable Protector	1	169	W-070169-01	Reverse Valve Washer	2				
-	5412104145	Cable Kit		207	W-372207-00	Rotor	1				
Z02		Cable Ass'y	1	208	W-372208-00	Rotor Blade	9				
Z05		Housing	1	209	W-382209-00	Cylinder	1				
Z06		Contact	8	(B31)	SP-2.56	Spring Pin	1				
-	W-389033-00	Front Case Ass'y		(B32)	SP-2.56	Spring Pin	1				
593	W-389593-00	Front Case	1	210	W-372210-00	Cylinder Upper Plate	1				
A03	BB-6701ZZS	Ball Bearing	1	211	W-372211-00	Cylinder Lower Plate	1				
A04	BB-6701-2RS	Ball Bearing	1	(B33)	SP-1.56	Spring Pin	1				
L01	PL-1/16	Plug	1	255	W-382255-00	Motor Fastening Nut	1				
-	W-389021-01	Oil Cylinder Ass'y <BF>		372	W-389372-00	Plastic Cover	1				
226	W-371226-00	Oil Plug	1	651	W-371651-00	Hanger (Horizontal)	1				
308A	W-279308-00	Spacer	1	712A	W-300712-00	Damper	1				
308B	W-372308-00	Spacer	1	753	W-389753-00	Piston Rod	1				
385	W-382385-00	Adjusting Screw	1	777	W-300777-00	Collar	1				
438	W-382438-01	Spindle <BF>	1	A01	BB-6900	Ball Bearing	1				
541B*	W-252541-00	Button Retainer Spring	1	A02	BB-6001ZZ	Ball Bearing	1				
551*	W-252551-00	Plug	1	D01	CS-420	Cap Screw	3				
583*	W-252583-00	Retainer Button (F)	1	D02	CS-310B	Button Head Cap Screw	2				
				E01	SW-4	Wave Washer	3				

* These parts are for "BF" only.

- The related parts are shown in a thick frame.
- #209 #211 #590 and #Z03 are supplied together with parts shown in ()
- Special tool is necessary for Cable Kit and #Z03
please contact your Fuji representative.
- For repair / replacement of electronic parts(#Z07)
please contact your Fuji representative.
- Specify parts number and quantity when ordering.

Standard Accessories		
AC No.	Description	Qty
F-701-1	1.5mm Hex. Pin Wrench	1
F-704	4mm Hex. Pin Wrench	1