


# Fuji USER MANUAL

## IMPACT WRENCH

MODEL : FW-330P-1



FW-330P-1

 Refer to " The instructions and Warning for Safety Use " enclosed in each tool box.

### SPECIFICATIONS

MODEL	Clutch type	Bolt Size	Square Drive Size	Recommended Torque Range	Max. Torque (Reverse)	Rotational Frequency	Air Consumption (At Load)	Overall Length (without socket)	Mass (without socket)	Air Inlet Thread Size	Air Hose Size
		mm	mm	N·m	N·m	min <sup>-1</sup>	m <sup>3</sup> /min	mm	kg	Rc or NPT 1/2	mm
FW-330P-1	Pinless	M30~M36	25.4	500~2,100	2,600	5,000	1.15	283	10.4	Rc or NPT 1/2	12.7

※ The performance figures are at 0.63MPa(6.3bar).

※ Oil bath type. Check clutch oil once each month. Use 2.5oz.(75ml) of SAE#5W-30 oil or equivalent.

Fuji Industrial Technique Co.,Ltd.

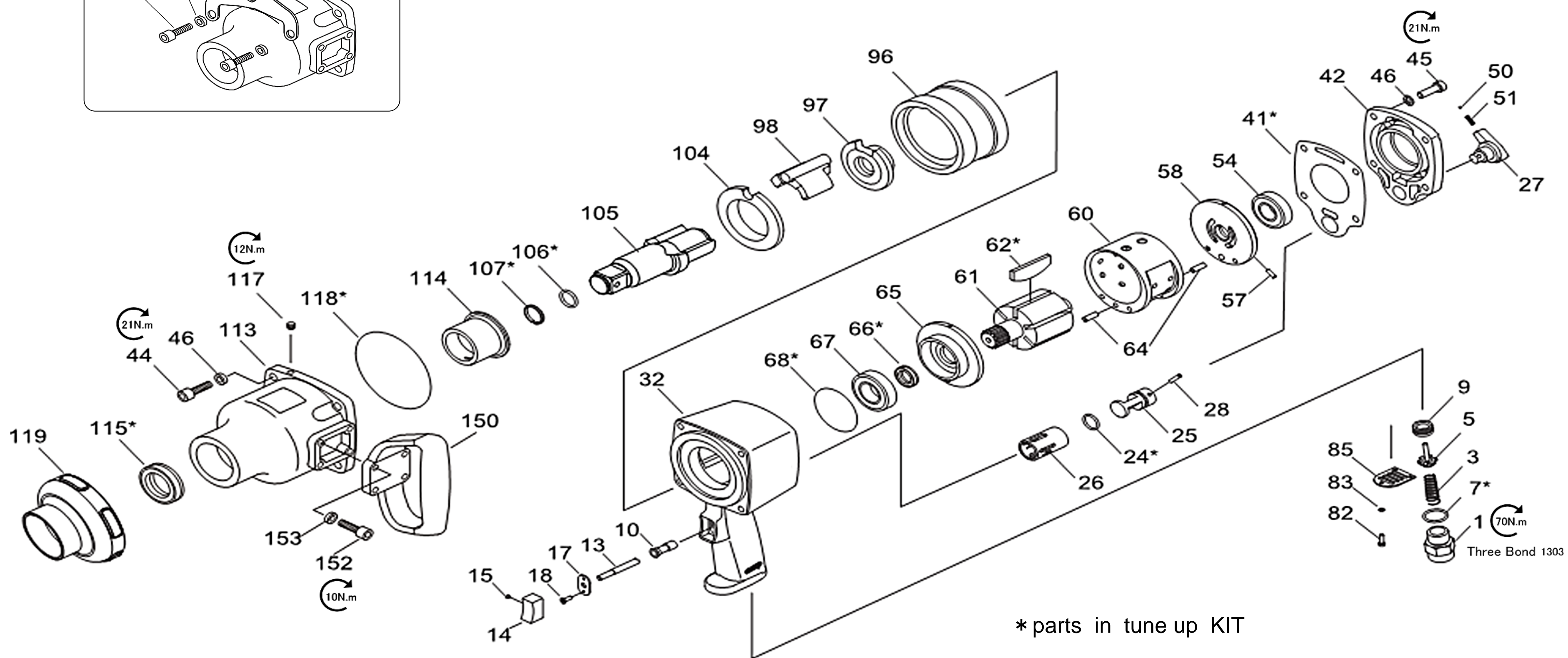
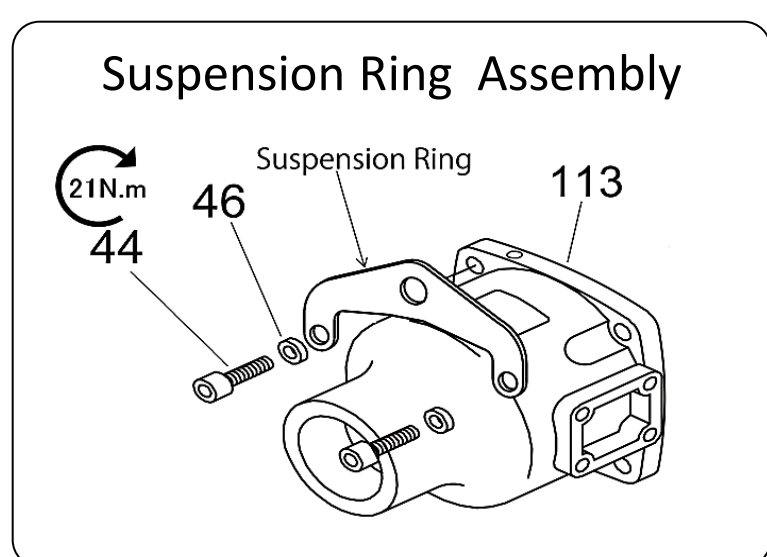
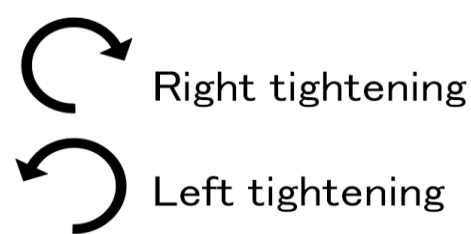
2-1-14, Kamiji, Higashinari-ku, Osaka, 537-0003 Japan

Tel : 81-6-6972-2335

Fax : 81-6-6972-2380

# MODEL :FW-330P-1

## EXPLODED VIEW



FW-330P-1

## PARTS LIST

Index No.	Parts No.	Parts Name	Qty	Index No.	Parts No.	Parts Name	Qty	Index No.	Parts No.	Parts Name	Qty
<b>A</b>	5412104123	HANDLE Ass'y (Rc) (Incl: Kit No. A1, A2, A3, A4)		<b>B</b>	5412104129	REAR COVER KIT		<b>J</b>	5412104137	SMALL PARTS KIT	
1	5412104147	Inlet Bushing (Rc)	1	41	8940162680	Gasket-End Cover	1	15		Screw-Trigger Retaining	1
32	5412104114	Housing Assembly (Incl: Item No. 9, 10, 26)	1	42		End Cover	1	18		Screw-Trigger Holder	2
9		Bushing-Throttle Valve	1	45		Screw	4	28		Pin	1
10		Bushing - Trigger	1	46		Lock Washer	4	50		Ball	1
26		Bushing - Reverse Valve	1	<b>C</b>	5412104130	REAR ENDPLATE KIT		51		Spring	1
41	8940162680	Gasket-End Cover	1	54	8940162177	Bearing	1	57		Pin	1
44		Screw	4	57		Pin	1	64		Pin	2
45		Screw	4	58		Plate - Rear End	1	82		Screw	3
48		Lock Washer	8	64		Pin	1	83		Washer	3
118		O ring	1	<b>D</b>	5412104131	FRONT ENDPLATE KIT		<b>OTHER PARTS AND SETS</b>			
<b>A</b>	5412104156	HANDLE Ass'y (NPT) (Incl: Kit No. A1, A2, A3, A4)		64		Pin	1	60	8940162182	Liner	1
1	8940162678	Inlet Bushing (NPT)	1	65		Plate-Front End	1	61	2050553153	Rotor	1
32	5412104114	Housing Assembly (Incl: Item No. 9, 10, 26)	1	66		Oil seal	1	62	8940162181	Blades (Set of 6)	1
9		Bushing-Throttle Valve	1	67	8940162185	Bearing	1	119	2050554943	Protective cover	1
10		Bushing - Trigger	1	68		O ring	1	—	5412104113	Name Plate	1
26		Bushing - Reverse Valve	1	<b>E</b>	5412104132	CLUTCH KIT		—	5412060277	Warning label	1
41	8940162680	Gasket-End Cover	1	96		Cage	1	<b>5412104138 TUNE UP KIT</b>			
44		Screw	4	97	8940162187	Cam	1	7, 24, 41, 62, 66, 68, 106,107, 115, 118			
45		Screw	4	98	8940162188	Dog	1				
48		Lock Washer	8	104	2050553193	Bushing-Cage	1				
118		O ring	1	<b>F</b>	2050554083	ANVIL Ass'y (Incl: Kit No. F1)					
<b>A1</b>	5412104125	THROTTLE VALVE KIT		105		Anvil	1				
3		Spring-Throttle Valve	1	<b>F1</b>	5412104133	SOCKET RETAINER KIT					
5		Valve-Throttle	1	106		O-Ring	1				
7		O-ring	1	107		Ring-Friction	1				
9		Bushing-Throttle Valve	1	<b>G</b>	5412104134	CLUTCH HOUSING KIT					
<b>A2</b>	5412104126	TRIGGER KIT		44		Screw	4				
13		Plunger-Throttle Valve	1	46		Lock Washer	4				
14		Trigger	1	113		Clutch Housing Ass'y (Incl: Item No. 11)	1				
15		Screw-Trigger Retaining	1	114		Bushing-Clutch Housing	1				
17		Trigger Holder	1	115		Oil seal	1				
18		Screw-Trigger Holder	2	117		Screw	1				
<b>A3</b>	5412104127	REVERSE VALVE KIT		118		O ring	1				
24		O-Ring	1	<b>H</b>	5412104135	SUPPORT HANDLE KIT					
25		Valve-Reverse	1	150		Handle - Support Black Painted	1				
27		Lever-Reverse	1	152		Screw	4				
28		Pin	1	153		Lock Washer	4				
50		Ball	1	<b>I</b>	5412104136	SCREWS KIT					
51		Spring	1	44		Screw	4				
<b>A4</b>	5412104128	EXHAUST KIT		45		Screw	4				
82		Screw	3	46		Lock Washer	8				
83		Washer	3	152		Screw	4				
85		Deflector	1	153		Lock Washer	4				

- #9 is one in HANDLE Ass'y .
- Spare parts without part number are not sold separately.
- High wear parts are underlined.

### Standard Accessories

AC No.	Description	Qty
5412104190	L-wrench	1
8940166788	Suspension Ring	1