

# Fuji USER MANUAL

## IMPACT WRENCHES

MODEL : FW-8PH-3




FW-8PH-3

### SPECIFICATIONS

| Model    | Capacity Bolt size (Guidance) |     | Rotational Frequency | Side to Center |        | Square Drive Size |     | Overall Length (without socket) |         | Mass (without socket) |     | Air Consumption (Under Load) |                      | Air Inlet Thread Size | Air Hose Size |     |
|----------|-------------------------------|-----|----------------------|----------------|--------|-------------------|-----|---------------------------------|---------|-----------------------|-----|------------------------------|----------------------|-----------------------|---------------|-----|
|          | mm                            | in  |                      | mm             | in     | mm                | in  | mm                              | in      | kg                    | lb  | m <sup>3</sup> /min          | ft <sup>3</sup> /min |                       | mm            | in  |
| FW-8PH-3 | 10                            | 3/8 | 7,500                | 27             | 1 1/16 | 12.7              | 1/2 | 162                             | 6 24/65 | 1.5                   | 3.3 | 0.40                         | 14.2                 | Rc or NPT 1/4         | 9.5           | 3/8 |

The performance figures are at 0.63MPa (6.3bar).

 Refer to "The Instructions and Warning for Safety Use" enclosed in each tool box.

Fuji Industrial Technique Co.,Ltd.

2-1-14, Kamiji, Higashinari-ku, Osaka, 537-0003 Japan

Tel : 81-6-6972-2335

Fax : 81-6-6972-2380

ASSEMBLY TOOLS

ABRASIVE TOOLS

DRILLS / TAPPERS

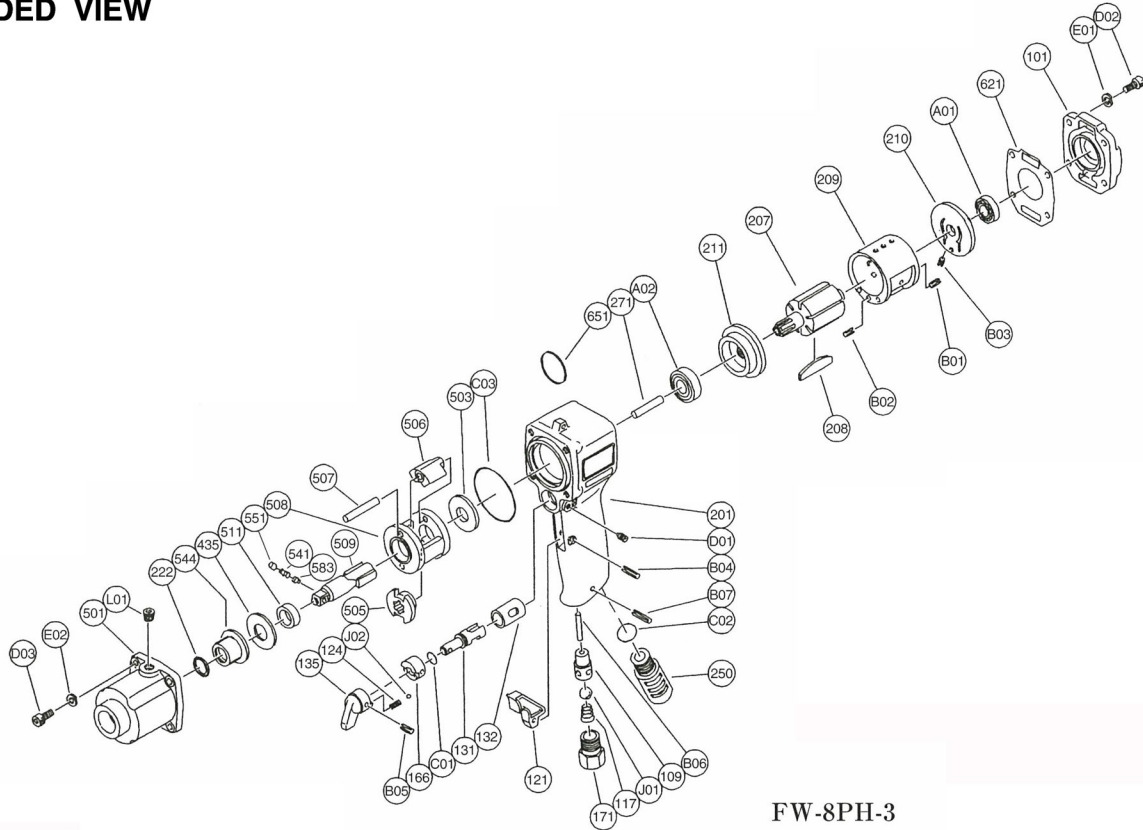
PERCUSSIVE TOOLS

AIR MOTORS

OTHER PRODUCTS

# MODEL : FW-8PH-3

## EXPLODED VIEW



FW-8PH-3

## PARTS LIST

| Index No.        | Parts No.          | Parts Name                  | Qt. | Index No. | Parts No.   | Parts Name                 | Qt. |
|------------------|--------------------|-----------------------------|-----|-----------|-------------|----------------------------|-----|
| <b>Ass'y No.</b> | <b>W-225013-01</b> | <b>Clutch Housing Ass'y</b> |     | 505       | W-225505-00 | Cam                        | 1   |
| 222              | W-225222-00        | Felt Ring                   | 1   | 506       | W-225506-00 | Clutch                     | 2   |
| 501              | W-225501-01        | Clutch Housing              | 1   | 507       | W-225507-00 | Clutch Pin                 | 2   |
| 544              | W-225544-00        | Clutch Housing Bushing      | 1   | 508       | W-225508-00 | Clutch Frame               | 1   |
| L01              | PL-1/8             | Plug                        | 1   | 509       | W-225509-05 | " B " Anvil                | 1   |
| 101              | W-225101-01        | Housing Cover               | 1   | ( 541 )   | W-224541-00 | Button Retainer Spring (F) | 1   |
| 117              | W-242117-00        | Throttle Valve Spring       | 1   | ( 551 )   | W-224551-00 | Plug                       | 1   |
| 121              | W-252121-00        | Throttle Valve Lever        | 1   | ( 583 )   | W-224583-00 | Retainer Button (F)        | 1   |
| 124              | G-005124-00        | Knock Spring                | 1   | 511       | W-225511-00 | Clutch Frame Bushing       | 1   |
| 131              | W-258131-00        | Reverse Valve               | 1   | 621       | W-225621-01 | Packing (A)                | 1   |
| 135              | W-225135-00        | Reverse Valve Lever         | 1   | 651       | W-181651-00 | Horizontal Hanger          | 1   |
| 166              | W-252166-00        | Reverse Valve Cover         | 1   | A01       | BB-EE3      | Ball Bearing               | 1   |
| 171              | W-242171-00        | Inlet Joint (Rc)            | 1   | A02       | BB-EE4      | Ball Bearing               | 1   |
|                  | W-242171-01        | Inlet Joint (NPT)           | 1   | B01       | SP-318      | Spring Pin                 | 1   |
| 201              | W-225201-04        | Housing                     | 1   | B09       | SP-318      | Spring Pin                 | 1   |
| ( 109 )          | W-264109-00        | Throttle Valve Bushing      | 1   | B12       | NR-326FR    | Needle Roller              | 1   |
| ( 132 )          | W-258132-00        | Reverse Valve Bushing       | 1   | B14       | SP-322      | Spring Pin                 | 1   |
| 207              | W-225207-00        | Rotor                       | 1   | C07       | O-S12       | " O " Ring                 | 1   |
| 208              | W-027208-00        | Rotor Blade                 | 6   | C13       | O-S15       | " O " Ring                 | 1   |
| 209              | W-225209-01        | Cylinder                    | 1   | C15       | O-S50       | " O " Ring                 | 1   |
| ( B31 )          | SP-36              | Spring Pin                  | 1   | D01       | CS-516      | Cap Screw                  | 4   |
| ( B32 )          | SP-36              | Spring Pin                  | 1   | D03       | CS-516      | Cap Screw                  | 4   |
| 210              | W-225210-01        | Cylinder Upper Plate        | 1   | D77       | SS-410D     | Set Screw                  | 1   |
| ( B33 )          | SP-1.56            | Spring Pin                  | 1   | E01       | SW-5        | Spring Washer              | 4   |
| 211              | W-225211-01        | Cylinder Lower Plate        | 1   | E03       | SW-5        | Spring Washer              | 4   |
| 250              | W-225250-00        | Exhaust Cover               | 1   | J01       | B-3/8       | Ball                       | 1   |
| 271              | W-225271-00        | Rotor Pin                   | 1   | J03       | B-3         | Ball                       | 1   |
| 435              | W-225435-00        | Thrust Washer               | 1   |           |             |                            |     |
| 503              | W-027503-00        | Spacer (B)                  | 1   |           |             |                            |     |

□ Ass'y No. denotes the assembled parts comprising of more than 1 pc. of parts.  
The related parts are shown in the thick frame.

□ # 201, 209, 210 and 509 are supplied together with parts shown in ( ).  
□ Specify parts number and quantity in ordering.