

Fuji USER MANUAL

IMPACT WRENCHES

MODEL : FW-88P-1




FW-88P-1

SPECIFICATIONS

Model	Capacity (Guidance)		Free Speed	Side to Center		Square Drive Size		Overall Length		Mass		Air Consumption (Under Load)		Air Inlet Thread Size	Air Hose Size	
	mm	in	min ⁻¹	mm	in	mm	in	mm	in	kg	lb	Nm ³ /min	Nft ³ /min	in	mm	in
FW-88P-1	8	5/16	5300	25.0	63/64	12.7	1/2	163	627/64	1.4	3.1	0.64	22.5	PT or NPT 1/4	9.5	3/8

The performance figures are at 0.63MPa (6.3bar).

 Refer to "The Instructions and Warning for Safety Use" enclosed in each tool box.

Fuji Industrial Technique Co.,Ltd.

2-1-14, Kamiji, Higashinari-ku, Osaka, 537-0003 Japan

Tel : 81-6-6972-2335

Fax : 81-6-6972-2380

ASSEMBLY TOOLS

ABRASIVE TOOLS

DRILLS / TAPPERS

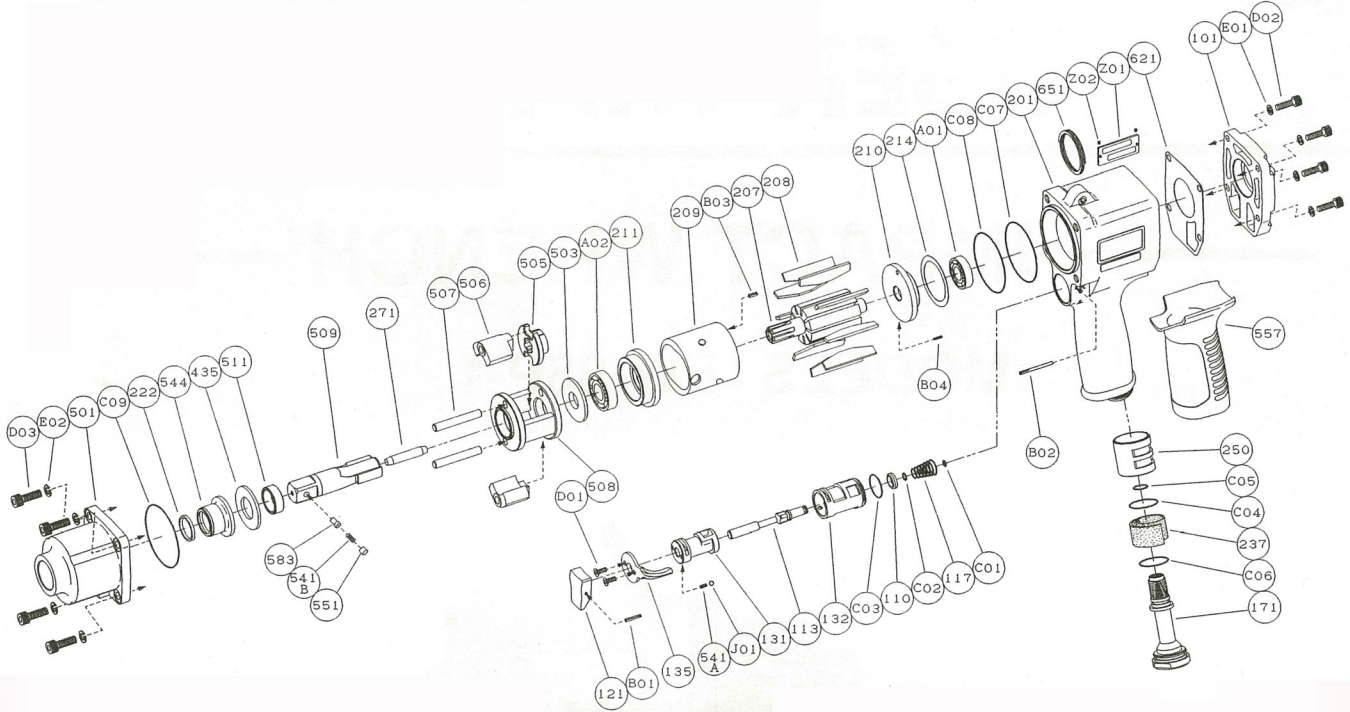
PERCUSSIVE TOOLS

AIR MOTORS

OTHER PRODUCTS

MODEL : FW-88P-1

EXPLODED VIEW



PARTS LIST

Index No.	Parts No.	Parts Name	Qt.
FW-88P-1			
CP No. W-309006-00 Housing C.P			
110	W-283110-00	Throttle Valve	1
113	W-282113-01	Throttle Valve Rod	1
117	W-282117-01	Throttle Valve Spring	1
121	W-254121-00	Throttle Valve Lever	1
131	W-282131-01	Reverse Valve	1
132	W-282132-01	Reverse Valve Bushing	1
135	W-281135-00	Reverse Valve Lever	1
171	W-282171-00	Inlet Joint <PT>	1
171	W-282171-01	Inlet Joint <NPT>	1
201	W-309201-00	Housing	1
237	W-282237-00	Muffler Pad	1
250	W-282250-01	Exhaust Cover	1
541A	W-252541-00	Button Retainer Spring <F>	1
B01	SP-212	Spring Pin	1
B02	GP-226GLC	Grooved Pin	1
C01	O-S4	"O"Ring	1
C02	O-P5	"O"Ring	1
C03	O-S17	"O"Ring	1
C04	O-S20	"O"Ring	1
C05	O-S10	"O"Ring	1
C06	O-S20	"O"Ring	1
C07	O-S44	"O"Ring	1
C08	O-S44	"O"Ring	1
D01	CS-36S	Cap Screw	2
J01	B-3	Ball	1
CP No. W-309013-00 Clutch Housing C.P			
222	W-252222-01	Felt Ring	1
501	W-309501-00	Clutch Housing	1
544	W-252544-01	Clutch Housing Bushing	1
101	W-280101-03	Housing Cover	1
207	W-309207-00	Rotor	1

Index No.	Parts No.	Parts Name	Qt.
208	W-280208-00	Rotor Blade	9
209	W-280209-01	Cylinder	1
(B03)	SP-2.56	Spring Pin	1
210	W-280210-01	Cylinder Upper Plate	1
(B04)	SP-1.56	Spring Pin	1
211	W-280211-01	Cylinder Lower Plate	1
214	W-162214-00	Adjusting Washer	1
271	W-225271-00	Rotor Pin	1
435	W-225435-00	Thrust Washer	1
503	W-252503-00	Spacer 	1
505	W-252505-00	Cam	1
506	W-252506-00	Hammer Clutch	2
507	W-252507-00	Clutch Pin	2
508	W-252508-00	Clutch Frame	1
509	W-252509-04	Anvil 	1
(541B)	W-224541-00	Button Retainer Spring <F>	1
551	W-224551-00	Plug	1
583	W-224583-00	Retainer Button <F>	1
511	W-252511-01	Clutch Frame Bushing	1
557	W-282557-01	Protector	1
621	W-280621-01	Packing <A>	1
651	W-181651-00	Horizontal Hanger	1
A01	BB-6900	Ball Bearing	1
A02	BB-6001	Ball Bearing	1
C09	O-S46	"O"Ring	1
D02	CS-414	Cap Screw	4
D03	CS-516	Cap Screw	4
E01	PW-4K	Plain Washer	4
E02	PW-5K	Plain Washer	4
Z01	NP-1084	Name Plate	1
Z02	NPN-0X3.2	Screw Rivet	2

- CP No. denotes the assembled parts comprising of more than 1 pc. of parts. The related parts are shown in the thick frame.
- #209,210 and 509 are supplied together with parts shown in ().
- Specify parts number and quantity in ordering.