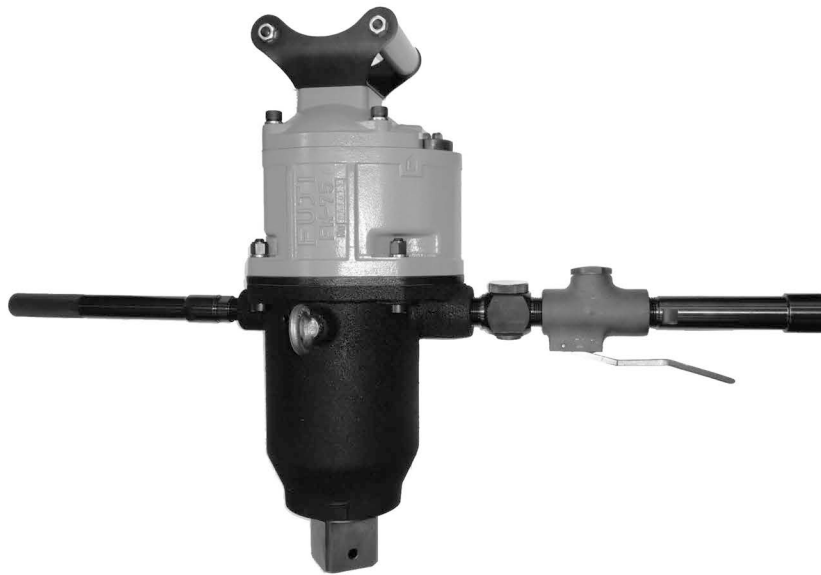


Fuji USER MANUAL

IMPACT WRENCHES

MODEL : FW-75-7




FW-75-7

SPECIFICATIONS

| Model | Bolt Size | Recommended Torque Range | Max. Torque | Rotational Frequency | Square Drive Size | | Over Length (without socket) | | Mass (without socket) | | Air Consumption (At Load) | | Air Inlet Thread Size | Air Hose Size | |
|---------|-----------|--------------------------|-------------|----------------------|-------------------|-------|------------------------------|----|-----------------------|-----|---------------------------|----------------------|-----------------------|---------------|-----|
| | mm | N.m | N.m | min ⁻¹ | mm | in | mm | in | kg | lb | m ³ /min | ft ³ /min | | mm | in |
| FW-75-7 | 68 | 5,800~11,300 | 12,000 | 3,000 | 63.5 | 2 1/2 | 610 | 24 | 60 | 132 | 2.1 | 74.9 | Rc 1 | 19 | 3/4 |

The performance figures are at 0.63MPa (6.3bar).

 Refer to "The Instructions and Warning for Safety Use" enclosed in each tool box.

Fuji Industrial Technique Co.,Ltd.

2-1-14, Kamiji, Higashinari-ku, Osaka, 537-0003 Japan

Tel : 81-6-6972-2335

Fax : 81-6-6972-2380

ASSEMBLY TOOLS

ABRASIVE TOOLS

DRILLS / TAPPERS

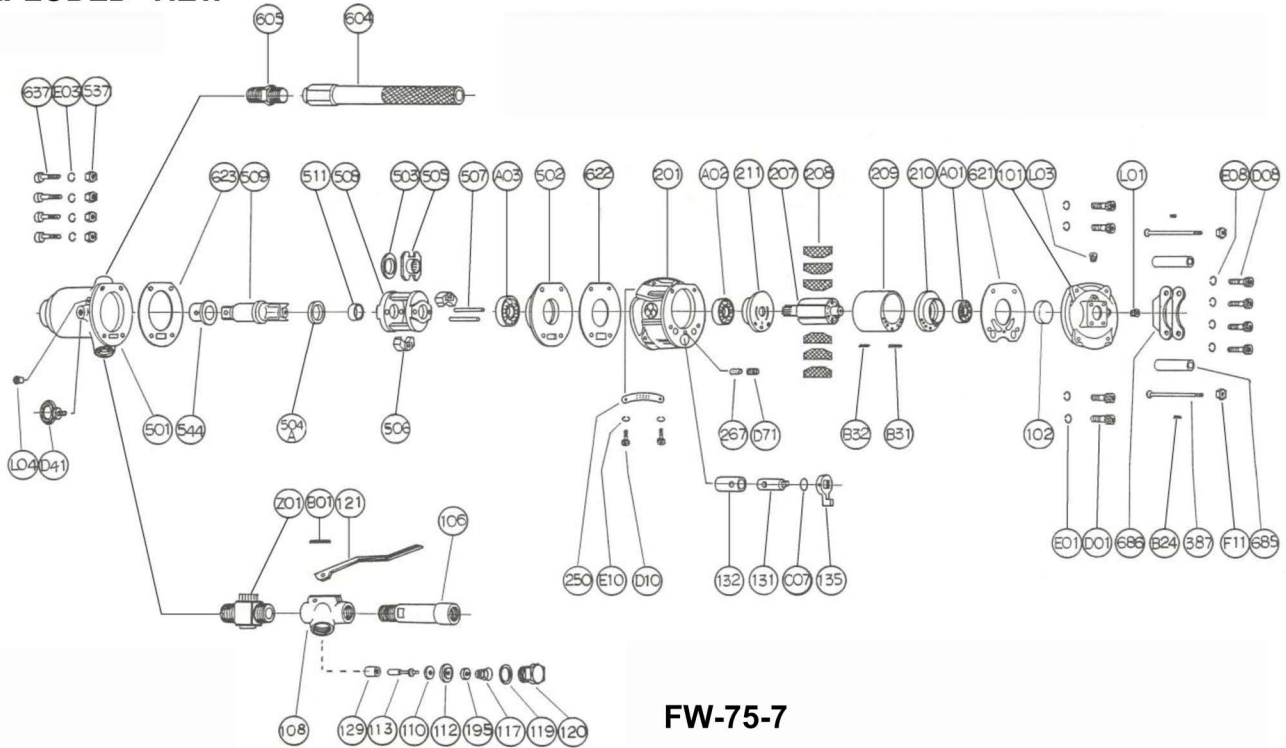
PERCUSSIVE TOOLS

AIR MOTORS

OTHER PRODUCTS

MODEL : FW-75-7

EXPLODED VIEW



FW-75-7

PARTS LIST

| Index No. | Parts No. | Parts Name | Qty | Index No. | Parts No. | Parts Name | Qty | Index No. | Parts No. | Parts Name | Qty |
|-----------|-------------|---------------------------|-----|-----------|-------------|-----------------------|-----|-----------|-------------|--------------------|-----|
| — | W-028003-00 | Throttle Valve Body Ass'y | | 201 | W-068006-50 | Housing | 1 | 605 | D-015605-00 | Dead Handle Joint | 1 |
| 108 | W-028003-50 | Throttle Valve Body | 1 | (132) | W-068132-00 | Reverse Valve Bushing | 1 | 621 | W-068621-00 | Packing (A) | 1 |
| (129) | W-028129-00 | T. V. Rod Bushing | 1 | 207 | W-068207-02 | Rotor | 1 | 622 | W-068622-00 | Packing (B) | 1 |
| 117 | W-028117-01 | T. V. Spring | 1 | 208 | W-068208-01 | Rotor Blade | 6 | 623 | W-068623-00 | Packing (C) | 1 |
| 119 | W-028119-00 | T. V. Cover Packing | 1 | 209 | W-068209-00 | Cylinder | 1 | 637 | W-068637-00 | Half Cut Head Bolt | 4 |
| 120 | W-028120-00 | Throttle Valve Cover | 1 | (B31) | SP-836 | Spring Pin | 1 | 685 | W-068685-00 | Head Handle | 2 |
| 121 | W-028121-00 | Throttle Valve Lever | 1 | (B32) | SP-820 | Spring Pin | 1 | 686 | W-068686-00 | Head Handle Plate | 1 |
| B01 | SP-528 | Spring Pin | 1 | 210 | W-068210-00 | Cylinder Upper Plate | 1 | A01 | BB-6306 | Ball Bearing | 1 |
| — | W-028008-00 | Throttle Valve Rod Ass'y | | 211 | W-068211-00 | Cylinder Lower Plate | 1 | A02 | BB-6307 | Ball Bearing | 1 |
| 110 | W-028110-01 | Throttle Valve | 1 | 250 | W-068250-00 | Exhaust Cover | 1 | A03 | BB-7211 | Ball Bearing | 1 |
| 112 | W-028112-01 | Throttle Valve Collar | 1 | 267 | W-025267-00 | Oil Plug Felt | 2 | B24 | SP-35 | Spring Pin | 2 |
| 113 | W-028113-01 | Throttle Valve Rod | 1 | 387 | W-068387-00 | Locking Bolt | 2 | C07 | O-29 | "O" Ring | 1 |
| 195 | W-028195-00 | Sub Throttle Valve | 1 | 502 | W-068502-00 | Clutch Housing Cover | 1 | D01 | CS-1250 | Cap Screw | 4 |
| — | W-068013-01 | Clutch Housing Ass'y | | 503 | W-068503-00 | Spacer (B) | 1 | D08 | CS-816 | Cap Screw | 4 |
| 501 | W-068501-00 | Clutch Housing | 1 | 504A | W-068504-00 | Spacer (C) | 1 | D10 | CS-512 | Cap Screw | 2 |
| 544 | W-068544-01 | Clutch Housing Bushing | 1 | 504B | W-068504-01 | Spacer (C) | 1 | D41 | ES-12 | Eye Bolt | 1 |
| L04 | PL-1/4 | Plug | 1 | 505 | W-068505-01 | Cam | 1 | D71 | SS-56 | Set Screw | 1 |
| 101 | W-068001-50 | Housing Cover | 1 | 506 | W-068506-01 | Hammer Clutch | 2 | E01 | SW-12 | Spring Washer | 4 |
| (L01) | PL-1/4 | Plug | 1 | 507 | W-068507-00 | Clutch Pin | 2 | E03 | SW-12 | Spring Washer | 4 |
| (L03) | PL-1/4 | Plug | 1 | 508 | W-068508-00 | Clutch Frame | 1 | E08 | SW-8 | Spring Washer | 4 |
| 102 | W-078102-00 | Housing Cover Plug | 1 | 509 | W-068509-00 | Anvil | 1 | E10 | SW-5 | Spring Washer | 2 |
| 106 | W-028106-00 | Throttle Valve Handle | 1 | 511 | W-068511-00 | Clutch Frame Bushing | 1 | F11 | N-10 | Nut | 2 |
| 131 | W-068131-00 | Reverse Valve | 1 | 537 | W-068537-00 | Hexagon Nut | 4 | Z01 | W-30 | Regulator | 1 |
| 135 | W-068135-00 | Reverse Valve Lever | 1 | 604 | D-015604-00 | Dead Handle | 1 | | | | |

- The related parts are shown in thick frame.
- #101,#108 #201 #209 are supplied together with parts shown in ().
- Specify parts number and quantity when ordering.

Standard Accessories

| AC No. | Description | Qty |
|-----------|--------------------|-----|
| IB-806000 | Inlet Bushing | 1 |
| F-706 | 6mm Hex Pin Wrench | 1 |