

# Fuji USER MANUAL

## -IMPACT WRENCHES & IMPACT DRIVERS-

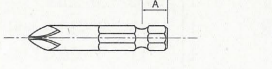
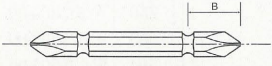
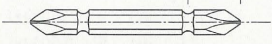
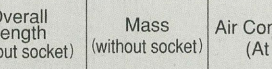
MODELS : FW-6PX-5, -6 & FW-6PXD-6, -60



FW-6PX-5, -6



FW-6PXD-6, -60

Bit Size	Size	Model
	(A) 9.5mm	FW-6PXD-6
	(B) 12mm	
	(A) 13mm	FW-6PXD-60
	(B) 16mm	

### SPECIFICATIONS

Model	Capacity Screw Size (Guidance)		Rotational Frequency	Distance from Center to side		Square Drive Size		Bit Shank Size		Overall Length (without socket)		Mass (without socket)		Air Consumption (At Load)		Air Inlet Thread Size	Air Hose Size	
	mm	in		mm	in	mm	in	mm	in	mm	in	kg	lb	m <sup>3</sup> /min	ft <sup>3</sup> /min		mm	in
FW-6PX-5	6	1/4	10,000	21	53/64	9.5	3/8	—	—	156	6 <sup>9</sup> /64	1.2	2.6	0.28	9.9	PT or NPT1/4	9.5	3/8
FW-6PX-6	6	1/4	10,000	21	53/64	9.5	3/8	—	—	156	6 <sup>9</sup> /64	1.2	2.6	0.28	9.9	PT or NPT1/4	9.5	3/8
FW-6PXD-6	6	1/4	10,000	21	53/64	—	—	6.35	1/4	168	6 <sup>5</sup> /8	1.2	2.6	0.28	9.9	PT or NPT1/4	9.5	3/8
FW-6PXD-60	6	1/4	10,000	21	53/64	—	—	6.35	1/4	168	6 <sup>5</sup> /8	1.2	2.6	0.28	9.9	PT or NPT1/4	9.5	3/8

The performance figures are at 0.63 MPa (6.3 bar).



Refer to "The Instructions and Warning for Safety Use" enclosed in each tool box.

Fuji Industrial Technique Co., Ltd.

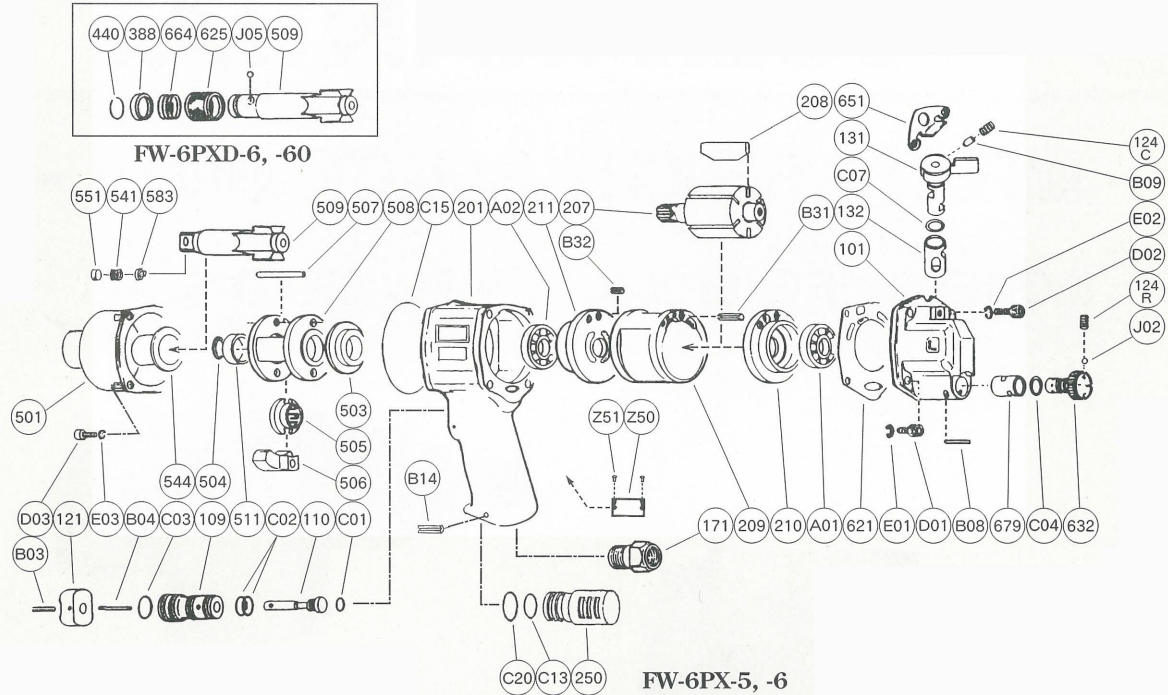
2-1-14, Kamiji, Higashinari-ku, Osaka, 537-0003 Japan

Tel : 81-6-6972-2335

Fax : 81-6-6972-2380

# MODELS : FW-6PX-5, -6 & FW-6PXD-6, -60

## EXPLODED VIEW



## PARTS LIST

Index No.	Parts No.	Parts Name	Qt.	Index No.	Parts No.	Parts Name	Qt.	Index No.	Parts No.	Parts Name	Qt.
<b>FW-6PX-5, -6 FW-6PXD-6, -60</b>				544	W-025544-00	Clutch Housing Bushing	1	D02	CS-520	Cap Screw	2
Ass'y No.	W-025001-00	Housing Cover Ass'y		<b>FW-6PX-6</b>				D03	CS-516	Cap Screw	4
101	W-025001-50	Housing Cover	1	207	W-172207-00	Rotor	1	E01	SW-5	Spring Washer	2
(132)	W-025132-00	Reverse Valve Bushing	1	208	W-025208-00	Rotor Blade	6	E02	SW-5	Spring Washer	2
(679)	W-025679-00	Regulator Bushing	1	209	W-025209-00	Cylinder	1	E03	SW-5	Spring Washer	4
124C	G-005124-00	Knock Spring <C>	1	(B31)	SP-2.512	Spring Pin	1	Z50	NP-1023	Name Plate	1
124R	G-005124-00	Knock Spring <R>	1	(B32)	SP-2.58	Spring Pin	1	Z51	NPN-0 × 3.2	Screw Rivet	2
131	W-025131-02	Reverse Valve	1	210	W-025210-00	Cylinder Upper Plate	1	<b>FW-6PX-5</b>			
632	W-025632-00	Regulator	1	211	W-025211-00	Cylinder Lower Plate	1	505	W-172505-00	Cam	1
B08	SP-315	Spring Pin	1	250	W-252250-00	Exhaust Cover	1	506	W-176506-03	Hammer Clutch	1
B09	NR-35FR	Needle Roller	1	503	W-025503-00	Spacer <B>	1	507	W-025507-00	Clutch Pin	1
C04	O-3	"O" Ring	1	504	W-025504-00	Spacer <C>	1	508	W-025508-A	Clutch Frame	1
C07	O-S7	"O" Ring	1	505	W-176505-00	Cam	1	509	W-176509-05	Anvil <B>	1
J02	B-3	Ball	1	506	W-176506-03	Hammer Clutch	2	(541)	W-252541-00	Button Retainer Spring <F>	1
Ass'y No.	W-176006-02	Housing Ass'y <PT>		507	W-025507-00	Clutch Pin	2	(551)	W-252551-00	Plug	1
Ass'y No.	W-176006-04	Housing Ass'y <NPT>		508	W-026508-02	Clutch Frame	1	(583)	W-252583-00	Retainer Button <F>	1
109	W-151109-00	Throttle Valve Bushing	1	509	W-176509-03	Anvil <B>	1	<b>FW-6PXD-6, -60</b>			
110	W-151110-00	Throttle Valve	1	(541)	W-252541-00	Button Retainer Spring <F>	1	388	W-305388-00	Spring Holder	1
121	W-125121-00	Throttle Valve Lever	1	(551)	W-252551-00	Plug	1	440	W-305440-00	Ring	1
171	W-025171-00	Inlet Joint <PT>	1	(583)	W-252583-00	Retainer Button <F>	1	509	W-176509-07	Anvil <D><For -6PXD-6>	1
171	W-025171-01	Inlet Joint <NPT>	1	511	W-025511-00	Clutch Frame Bushing	1	509	W-176509-08	Anvil <D><For -6PXD-60>	1
201	W-176201-02	Housing	1	621	W-025621-00	Packing <A>	1	625	W-305625-00	Bit Cover	1
B03	SP-2.518	Spring Pin	1	651	W-025651-00	Hanger	1	664	W-305664-00	Finder Spring	1
B04	SP-2.518	Spring Pin	1	A01	BB-EE3	Ball Bearing	1	J05	B-3	Ball	1
C01	O-P3	"O" Ring	1	A02	BB-EE3	Ball Bearing	1	Z50	NP-1025	Name Plate	1
C02	O-S9	"O" Ring	2	B14	SP-322	Spring Pin	1				
C03	O-S11.2	"O" Ring	1	C13	O-S14	"O" Ring	1				
Ass'y No.	W-176013-00	Clutch Housing Ass'y		C15	O-S38	"O" Ring	1				
501	W-176501-00	Clutch Housing	1	C20	O-S15	"O" Ring	1				
				D01	CS-516	Cap Screw	2				

□ Ass'y No. denotes no. of the assembled parts comprising of more than 1 pc. of parts. The related parts are shown in the thick frame.

□ Index Nos. 101, 209, and 509 are supplied together with parts shown in ( ).

□ Specify parts number and quantity in ordering.

■ Standard Accessory :

FW-6PXD-6:PB-2-3 .....75mm Driver Bit

1.