

Fuji USER MANUAL

-IMPACT WRENCHES & IMPACT DRIVERS- MODELS : FW-6PM-1 & FW-6PMD-1, -10



FW-6PM-1



FW-6PMD-1,-10

Bit Size	Size	Model
	(S) 9.5mm (D) 12mm	FW-6PMD-1
	(S) 13mm (D) 16mm	FW-6PMD-10

SPECIFICATIONS

Model	Capacity Screw Size (Guidance)		Rotational Frequency	Distance from Center to Side		Square Drive Size		Bit Shank Size		Overall Length (without socket)		Mass (without socket)		Air Consumption (At Load)		Air Inlet Thread Size	Air Hose Size	
	mm	in		mm	in	mm	in	mm	in	mm	in	kg	lb	m ³ /min	ft ³ /min		in	mm
FW-6PM-1	6	1/4	8,500	23.5	59/64	9.5	3/8	—	—	140	5 ³³ /64	0.92	2.0	0.53	18.7	PT or NPT 1/4	9.5	3/8
FW-6PMD-1	6	1/4	8,500	23.5	59/64	—	—	6.35	1/4	146	5 ³ /4	0.92	2.0	0.53	18.7	PT or NPT 1/4	9.5	3/8
FW-6PMD-10	6	1/4	8,500	23.5	59/64	—	—	6.35	1/4	146	5 ³ /4	0.92	2.0	0.53	18.7	PT or NPT 1/4	9.5	3/8

The performance figures are at 0.63 MPa (6.3 bar).



Refer to "The Instructions and Warning for Safety Use" enclosed in each tool box.

Fuji Industrial Technique Co., Ltd.

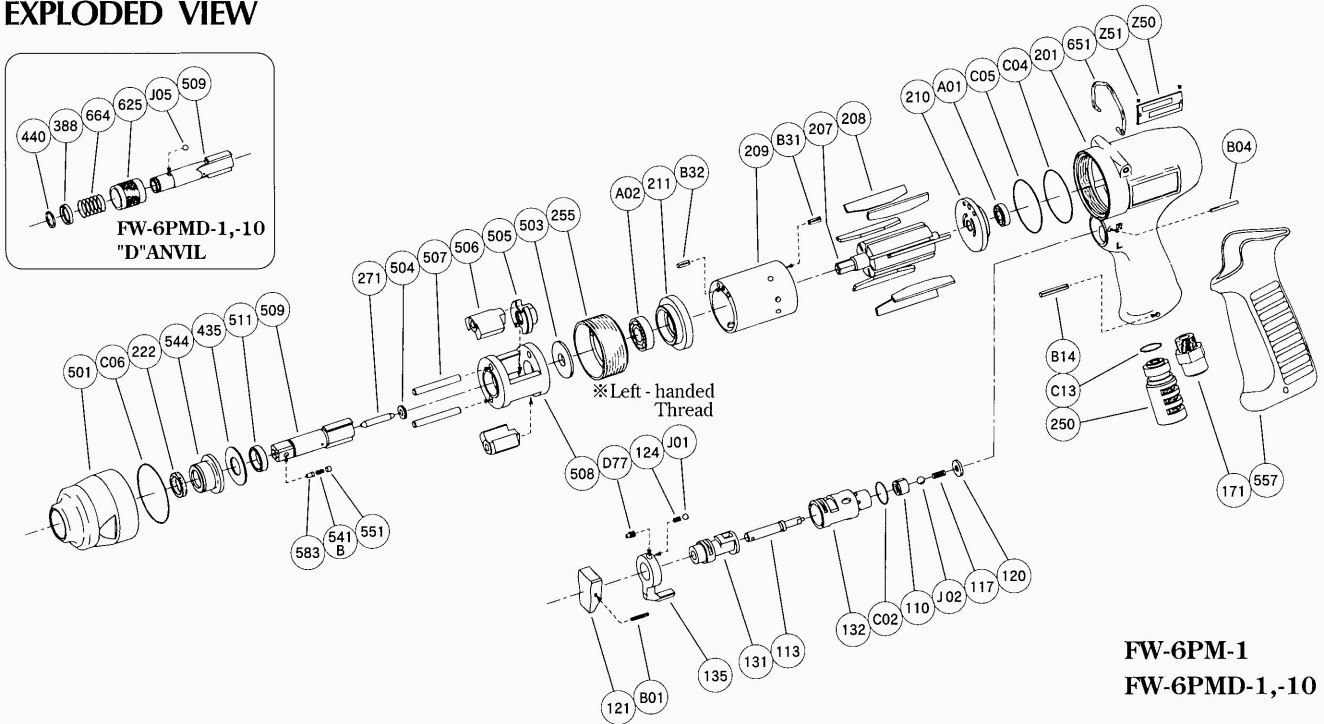
2-1-14, Kamiji, Higashinari-ku, Osaka, 537-0003 Japan

Tel : 81-6-6972-2335

Fax : 81-6-6972-2380

MODELS : FW-6PM-1&FW-6PMD-1,-10

EXPLODED VIEW



FW-6PM-1
FW-6PMD-1,-10

PARTS LIST

Index No.	Parts No.	Parts Name	Qty	Index No.	Parts No.	Parts Name	Qty	Index No.	Parts No.	Parts Name	Qty
FW-6PM-1											
FW-6PMD-1, -10											
—	W-305006-00	Housing Ass'y <PT>		(B32)	SP-38SUS	Spring Pin	1	210	W-305210-00	Cylinder Upper Plate	1
—	W-305006-02	Housing Ass'y <NPT>		210	W-305210-00	Cylinder Upper Plate	1	211	W-305211-00	Cylinder Lower Plate	1
110	W-305110-00	Throttle Valve	1	211	W-305211-00	Cylinder Lower Plate	1	250	W-305250-00	Exhaust Cover	1
113	W-276113-00	Throttle Valve Rod	1	250	W-305250-00	Exhaust Cover	1	255	W-305255-00	Motor Fastening Nut	1
117	W-276117-00	Throttle Valve Spring	1	271	W-191271-00	Rotor Pin	1	271	W-191271-00	Rotor Pin	1
120	W-276120-00	Throttle Valve Cover	1	435	W-242435-00	Thrust Washer	1	388	W-305388-00	Spring Holder	1
121	W-254121-00	Throttle Valve Lever	1	503	W-242503-00	Spacer 	1	435	W-242435-00	Thrust Washer	1
124	W-254124-00	Knock Spring	1	504	W-305504-00	Spacer <C>	1	440	W-305440-00	Ring	1
131	W-276131-00	Reverse Valve	1	505	W-305505-00	Cam	1	503	W-242503-00	Spacer 	1
132	W-276132-00	Reverse Valve Bushing	1	506	W-305506-00	Hammer Clutch	2	504	W-305504-00	Spacer <C>	1
135	W-254135-00	Reverse Valve Lever	1	505	W-305505-00	Cam	1	505	W-305505-00	Cam	1
171	W-276171-00	Inlet Bushing <PT>	1	506	W-305506-00	Hammer Clutch	2	506	W-305506-00	Hammer Clutch	2
	W-276171-01	Inlet Bushing <NPT>	1	507	W-242507-00	Clutch Pin	2	507	W-305507-00	Clutch Pin	2
201	W-305201-00	Housing	1	508	W-242508-00	Clutch Frame	1	507	W-242507-00	Clutch Pin	2
B01	SP-212	Spring Pin	1	509	W-305509-03	Anvil 	1	508	W-242508-00	Clutch Frame	1
B04	GP-220GLC	Grooved Pin	1	(541B)	W-252541-00	Button Retainer Spring <F>	1	509	W-305509-01	Anvil <D>(For FW-6PMD-1)	1
C02	O-S15	"O" Ring	1	551	W-252551-00	Plug	1		W-305509-00	Anvil <D>(For FW-6PMD-10)	1
C04	O-S36	"O" Ring	1	583	W-252583-00	Retainer Button <F>	1	511	W-242511-00	Clutch Frame Bushing	1
C05	O-S36	"O" Ring	1	511	W-242511-00	Clutch Frame Bushing	1	557	W-276557-00	Rubber Protector	1
D77	SS-46D	Set Screw	1	557	W-276557-00	Rubber Protector	1	625	W-305625-00	Bit Cover	1
J01	B-3	Ball	1	651	W-225651-00	Hanger	1	651	W-225651-00	Hanger	1
J02	B-4U	Urethane Ball	1	A01	BB-EE2	Ball Bearing	1	664	W-305664-00	Finder Spring	1
—	W-305013-01	Clutch Housing Ass'y		A02	BB-EE3	Ball Bearing	1	A01	BB-EE2	Ball Bearing	1
222	W-242222-00	Felt Ring	1	B14	SP-320	Spring Pin	1	A02	BB-EE3	Ball Bearing	1
501	W-305501-00	Clutch Housing	1	C06	O-S40	"O" Ring	1	B14	SP-320	Spring Pin	1
544	W-242544-00	Clutch Housing Bushing	1	C13	O-S14	"O" Ring	1	C06	O-S40	"O" Ring	1
FW-6PM-1				Z50	NP-1094	Name Plate	1	C13	O-S14	"O" Ring	1
207	W-305207-00	Rotor	1	Z51	NPN-0X3.2	Screw Rivet	2	J05	B-3	Ball	1
208	W-305208-00	Rotor Blade	7	FW-6PMD-1,-10				Z50	NP-1080	Name Plate	1
209	W-305209-00	Cylinder	1	207	W-305207-00	Rotor	1	Z51	NPN-0X3.2	Screw Rivet	2
(B31)	SP-38SUS	Spring Pin	1	208	W-305208-00	Rotor Blade	7				
(B32)	SP-38SUS	Spring Pin	1	209	W-305209-00	Cylinder	1				

- The related parts are shown in a thick frame.
- #209, and 509 are supplied together with parts shown in ().
- Specify parts number and quantity when ordering.