

Fuji USER MANUAL

— IMPACT WRENCHES & DRIVERS — MODELS : FW-6PL-1 & FW-6PLD-1



FW-6PL-1



FW-6PLD-1

SPECIFICATIONS

Model	Capacity Screw Size (Guidance)		Free Speed min ⁻¹	Side to Center		Square Drive Size		Bit Shank Size		Overall Length		Mass		Air Consumption (Under Load)		Air Inlet Thread Size	Air Hose Size	
	mm	in		mm	in	mm	in	mm	in	mm	in	kg	lb	m ³ /min	ft ³ /min		in	mm
FW-6PL-1	6	1/4	10,000	21	53/64	9.5	3/8	—	—	175	6 57/64	0.9	2	0.2	7.1	PTorNPT 1/4	9.5	3/8
FW-6PLD-1	6	1/4	10,000	21	53/64	—	—	6.35	1/4	180	7 3/32	0.9	2	0.2	7.1	PTorNPT 1/4	9.5	3/8

The performance figures are at 0.63 MPa (6.3 bar).



Refer to "The Instructions and Warning for Safety Use" enclosed in each tool box.

Fuji Industrial Technique Co.,Ltd.

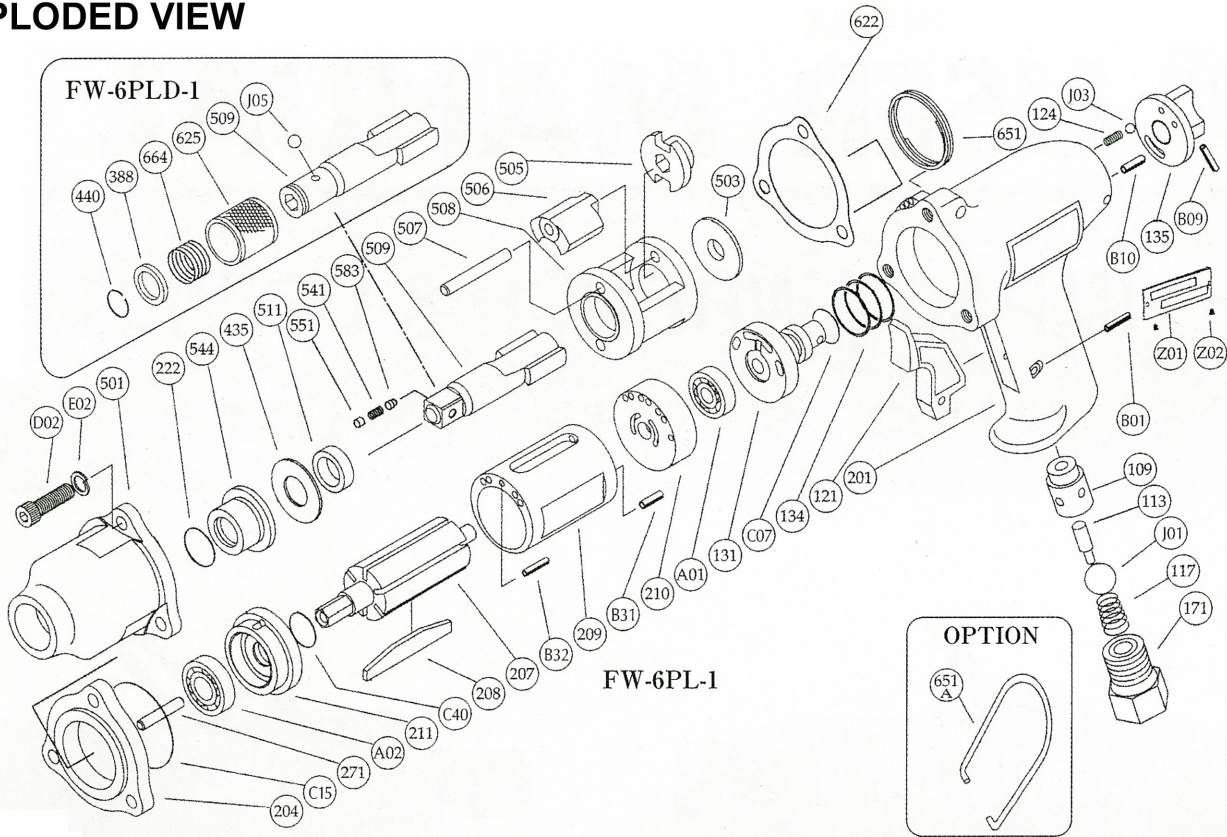
2-1-14, Kamiji, Higashinari-ku, Osaka, 537-0003 Japan

Tel : 81-6-6972-2335

Fax : 81-6-6972-2380

MODELS : FW-6PL-1 & FW-6PLD-1

EXPLODED VIEW



PARTS LIST

Index No.	Parts No.	Parts Name	Qt.
FW-6PL-1			
FW-6PLD-1			
Ass'y No.	W-242006-02	Housing Ass'y (PT)	
Ass'y No.	W-242006-04	Housing Ass'y (NPT)	
113	W-242113-00	Throttle Valve Rod	1
117	W-242117-00	Throttle Valve Spring	1
121	W-242121-00	Throttle Valve Lever	1
124	G-005124-00	Knock Spring	1
131	W-242131-00	Reverse Valve	1
134	W-242134-00	Reverse Valve Spring	1
135	W-242135-00	Reverse Valve Lever	1
171	W-242171-00	Inlet Joint <PT>	1
	W-242171-01	Inlet Joint <NPT>	1
201	W-242006-50	Housing	1
(109)	W-242109-01	Throttle Valve Bushing	1
B01	SP-318	Spring Pin	1
B09	SP-314	Spring Pin	1
B10	SP-36	Spring Pin	1
C07	O-P10A	"O" Ring	1
J01	B-3/8	Steel Ball	1
J03	B-3	Steel Ball	1
Ass'y No.	W-242013-01	Clutch Housing Ass'y	
222	W-242222-00	Felt Ring	1
501	W-242501-02	Clutch Housing	1
544	W-242544-00	Clutch Housing Bushing	1
FW-6PL-1			
204	W-242204-01	Housing Lower Cover	1
207	W-242207-00	Rotor	1
208	W-242208-00	Rotor Blade	6
209	W-242209-00	Cylinder	1
210	W-242210-00	Cylinder Upper Plate	1
211	W-242211-00	Cylinder Lower Plate	1
271	W-191271-00	Rotor Pin	1
435	W-242435-00	Thrust Washer	1
503	W-242503-00	Spacer 	1

Index No.	Parts No.	Parts Name	Qt.
505	W-242505-00	Cam	1
506	W-242506-00	Hammer Clutch	2
507	W-242507-00	Clutch Pin	2
508	W-242508-00	Clutch Frame	1
509	W-244509-03	Anvil 	1
(541)	W-252541-00	Button Retainer Spring <F>	1
(551)	W-252551-00	Plug	1
(583)	W-252583-00	Retainer Button <F>	1
511	W-242511-00	Clutch Frame Bushing	1
622	W-242622-00	Packing 	1
651	W-181651-00	Hanger	1
A01	BB-EE2	Ball Bearing	1
A02	BB-EE3	Ball Bearing	1
B31	SP-26	Spring Pin	1
B32	SP-2.512	Spring Pin	1
C15	O-S34F	"O" Ring	1
C40	O-S10	"O" Ring	1
D02	CS-522	Cap Screw	3
E02	SW-5	Spring Washer	3
Z01	NP-1002	Name Plate	1
Z02	NPN-0 × 3.2	Screw Rivet	2
It is common with FW-6PL-1 excluding the undermentioned parts.			
FW-6PLD-1			
388	W-184388-00	Spring Holder	1
440	W-184440-00	Ring	1
509	W-242509-00	Anvil <D>	1
625	W-184625-00	Bit Cover	1
664	W-184664-00	Finder Spring	1
J05	B-4	Ball	2
Z01	NP-1004	Name Plate	1
OPTION			
651A	C-028651-00	Hanger	1

□ Ass'y No. denotes the assembled parts comprising of more than 1 pc. of parts.
The related parts are shown in the thick frame.

□ #201 and 509 are supplied together with parts shown in ().
□ Specify parts number and quantity in ordering.