

Fuji USER MANUAL

IMPACT WRENCHES & DRIVERS

MODELS : FW-6PH-1, -11 & FW-6PHD-1



FW-6PH-1, -11



FW-6PHD-1

SPECIFICATIONS

Model	Capacity Screw Size (Guidance)		Rotational Frequency	Distance from Center to Side		Square Drive Size		Bit Shank Size		Overall Length		Mass		Air Consumption (At Load)		Air Inlet Thread Size	Air Hose Size	
	mm	in		mm	in	mm	in	mm	in	mm	in	kg	lb	m ³ /min	ft ³ /min		in	mm
FW-6PH-1	8	5/16	9000	25	63/64	9.5	3/8	—	—	147	5 25/32	1.35	3.0	0.35	12.4	PTorNPT 1/4	9.5	3/8
FW-6PH-11	8	5/16	9000	25	63/64	12.7	1/2	—	—	152	6	1.40	3.1	0.35	12.4	PTorNPT 1/4	9.5	3/8
FW-6PHD-1	8	5/16	9000	25	63/64	—	—	6.35	1/4	154	6 1/16	1.35	3.0	0.35	12.4	PTorNPT 1/4	9.5	3/8

The performance figures are at 0.63MPa (6.3bar).

 Refer to "The Instructions and Warning for Safety Use" enclosed in each tool box.

Fuji Industrial Technique Co.,Ltd.

2-1-14, Kamiji, Higashinari-ku, Osaka, 537-0003 Japan

Tel : 81-6-6972-2335

Fax : 81-6-6972-2380

ASSEMBLY TOOLS

ABRASIVE TOOLS

DRILLS / TAPPERS

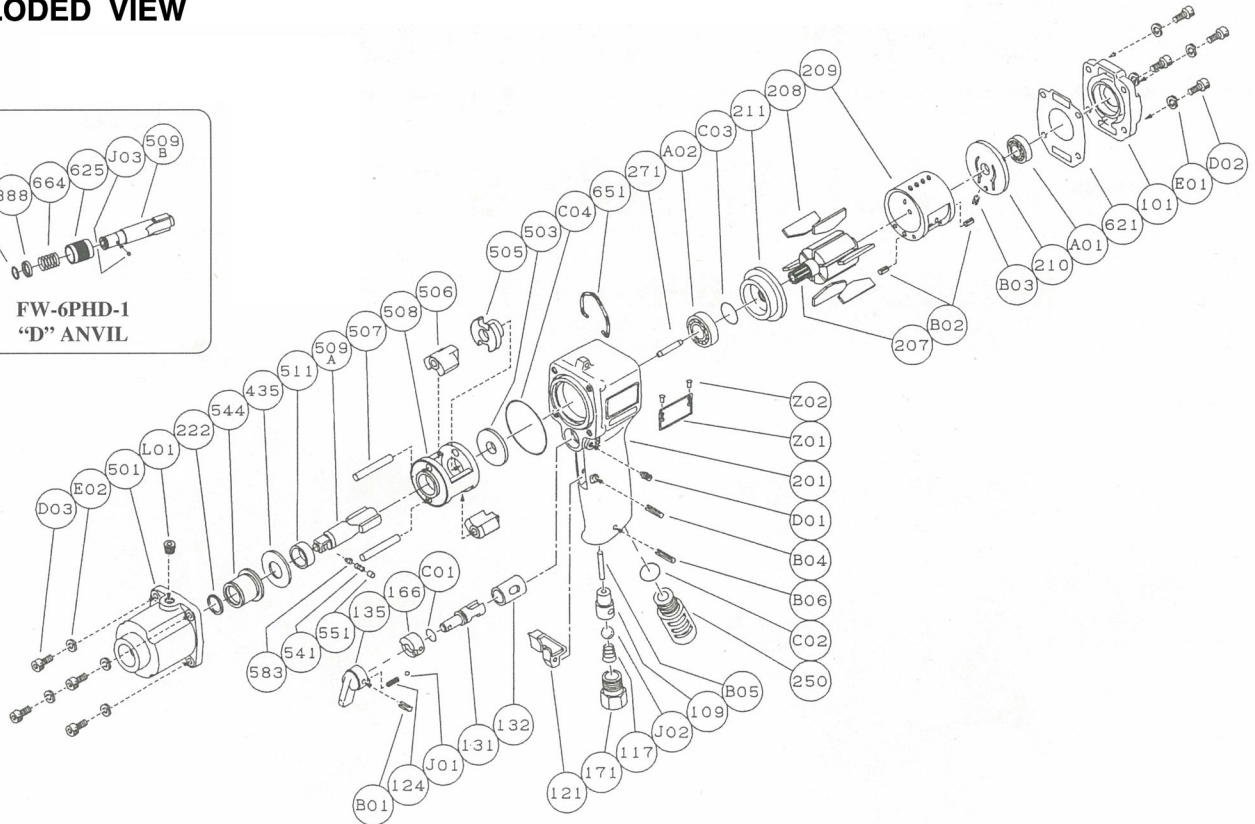
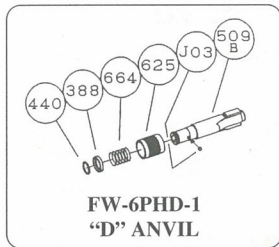
PERCUSSIVE TOOLS

AIR MOTORS

OTHER PRODUCTS

MODELS : FW-6PH-1, -11 & FW-6PHD-1

EXPLODED VIEW



PARTS LIST

Index No.	Parts No.	Parts Name	Qt.
FW-6PH-1, -11, FW-6PHD-1			
Ass'y No.	W-252006-53	Housing Ass'y	
109	W-252109-00	Throttle Valve	1
132	W-252132-00	Reverse Valve Bushing	1
201	W-252201-03	Housing	1
Ass'y No.	W-252009-01	Reverse Valve Ass'y	
124	G-005124-00	Knock Spring	1
131	W-252131-00	Reverse Valve	1
135	W-225135-00	Reverse Valve Lever	1
166	W-252166-00	Reverse Valve Cover	1
B01	SP-318	Spring Pin	1
C01	O-S9	"O" Ring	1
J01	B-3	Ball	1
FW-6PH-1, FW-6PHD-1			
Ass'y No.	W-252013-02	Clutch Housing Ass'y	
222	W-252222-00	Felt Ring	1
501	W-252501-01	Clutch Housing	1
544	W-252544-00	Clutch Housing Bushing	1
L01	PL-1/8	Plug	1
FW-6PH-11			
Ass'y No.	W-252013-03	Clutch Housing Ass'y	
222	W-252222-01	Felt Ring	1
501	W-252501-01	Clutch Housing	1
544	W-252544-01	Clutch Housing Bushing	1
L01	PL-1/8	Plug	1
FW-6PH-1, -11, FW-6PHD-1			
101	W-252101-01	Housing Cover	1
117	W-242117-00	Throttle Valve Spring	1
121	W-252121-00	Throttle Valve Lever	1
171	W-242171-00	Inlet Joint <PT>	1
171	W-242171-01	Inlet Joint <NPT>	1
207	W-252207-00	Rotor	1

Index No.	Parts No.	Parts Name	Qt.
208	W-027208-00	Rotor Blade	6
209	W-252209-00	Cylinder	1
(B02)	SP-36	Spring Pin	2
210	W-252210-00	Cylinder Upper Plate	1
(B03)	SP-1.56	Spring Pin	1
211	W-252211-00	Cylinder Lower Plate	1
250	W-252250-02	Exhaust Cover	1
271	W-225271-00	Rotor Pin	1
435	W-252435-00	Thrust Washer	1
503	W-252503-00	Spacer 	1
505	W-252505-00	Cam	1
506	W-252506-00	Hammer Clutch	2
507	W-252507-00	Clutch Pin	2
508	W-252508-00	Clutch Frame	1
509A	W-252509-01	Anvil 	1
(541)	W-252541-00	Button Retainer Spring <F>	1
(551)	W-252551-00	Plug	1
(583)	W-252583-00	Retainer Button <F>	1
511	W-252511-00	Clutch Frame Bushing	1
621	W-252621-00	Packing <A>	1
651	W-225651-00	Hanger	1
A01	BB-6900	Ball Bearing	1
A02	BB-600IZ	Ball Bearing	1
B04	SP-318	Spring Pin	1
B05	NR-326FR	Needle Roller	1
B06	SP-322	Spring Pin	1
C02	O-S15	"O" Ring	1
C03	O-S12.5	"O" Ring	1
C04	O-S46	"O" Ring	1
D01	SS-410D	Set Screw	1
D02	CS-516	Cap Screw	4
D03	CS-516	Cap Screw	4

Index No.	Parts No.	Parts Name	Qt.
E01	SW-5	Spring Washer	4
E02	SW-5	Spring Washer	4
J02	B-3/8	Ball	1
Z01	NP-1012	Name Plate	1
Z02	NPN-0X3.2	Screw Rivet	2
It is common with FW-6PH-1 excluding the undermentioned parts.			
FW-6PHD-1			
388	W-184388-00	Spring Holder	1
440	W-184440-00	Ring	1
509B	W-256509-00	Anvil <D>	1
625	W-184625-00	Bit Cover	1
664	W-184664-00	Finder Spring	1
J03	B-4	Ball	2
Z01	NP-1013	Name Plate	1
FW-6PH-11			
435	W-225435-00	Thrust Washer	1
509A	W-252509-04	Anvil 	1
(541)	W-224541-00	Button Retainer Spring <F>	1
(551)	W-224551-00	Plug	1
(583)	W-224583-00	Retainer Button <F>	1
511	W-252511-01	Clutch Frame Bushing	1

- Ass'y No. denotes the assembled parts comprising of more than 1pc. of parts. The related parts are shown in the thick frame.
- #209, 210 and 509A are supplied together with parts shown in ().
- Specify parts number and quantity in ordering.
- Standard Accessory:
<FW-6PHD-1>
PB-2-3... Phillips No.2 ⊕ 3"(75mm) Driver Bit 1