

# Fuji USER MANUAL

## SCREW DRIVERS

(IMPACT CLUTCH TYPE)


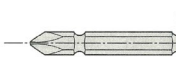
MODELS : FW-5SXD-7, -70, -8, -80



FW-5SXD-7, -70




FW-5SXD-8, -80

Bit Size	Size	Model
	(A) 9.5mm	FW-5SXD-7, -8
	(B) 12 mm	
	(A) 13 mm	FW-5SXD-70, -80
	(B) 16 mm	

### SPECIFICATIONS

Model	Capacity Screw Size (Guidance)		Rotational Frequency	Distance from Center to Side		Bit Shank Size		Overall Length (without socket)		Mass		Air Consumption (At Load)		Air Inlet Thread Size	Air Hose Size	
	mm	in		mm	in	mm	in	mm	in	kg	lb	m <sup>3</sup> /min	ft <sup>3</sup> /min		mm	in
FW-5SXD-7, -70	5	3/16	12,000	17.0	43/64	6.35	1/4	223	8 25/32	0.70	1.5	0.20	7.1	PT or NPT 1/4	6.3	1/4
FW-5SXD-8, -80	5	3/16	12,000	17.0	43/64	6.35	1/4	193	7 19/32	0.65	1.4	0.20	7.1	PT or NPT 1/4	6.3	1/4

The performance figures are at 0.63MPa (6.3bar).

 Refer to "The Instructions and Warning for Safety Use" enclosed in each tool box.

Fuji Industrial Technique Co.,Ltd.

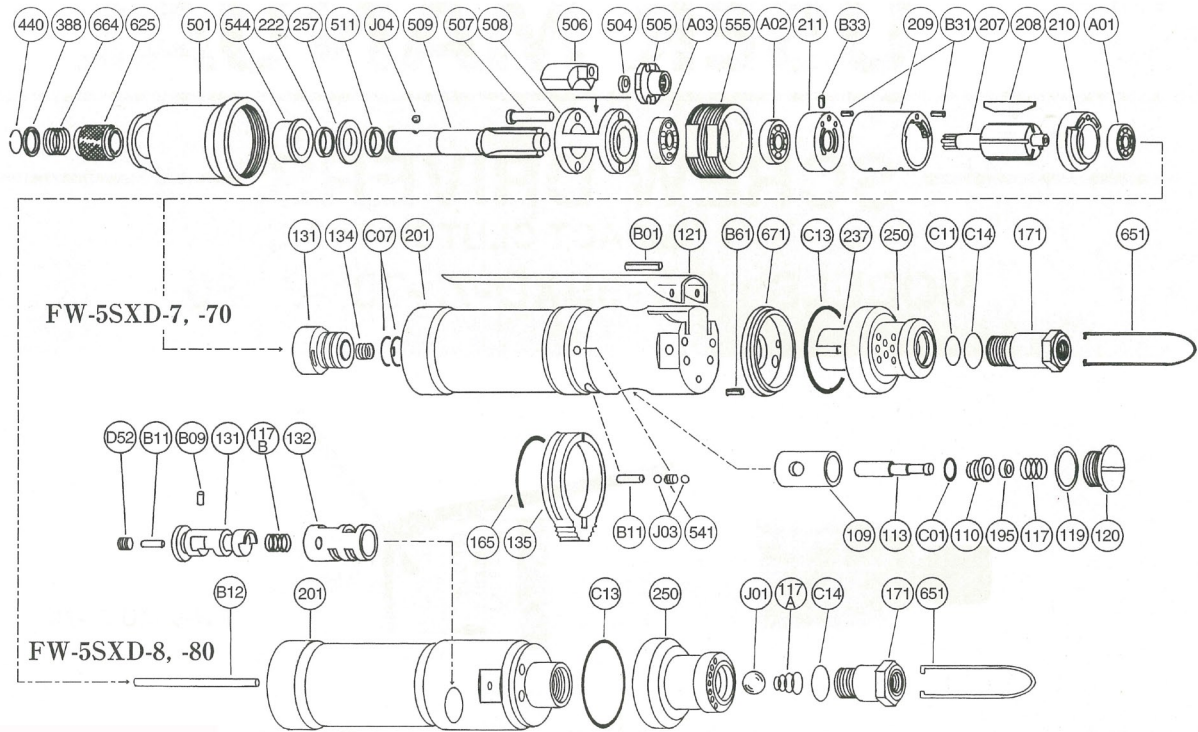
2-1-14, Kamiji, Higashinari-ku, Osaka, 537-0003 Japan

Tel : 81-6-6972-2335

Fax : 81-6-6972-2380

# MODELS : FW-5SXD-7, -70, -8, -80

## EXPLODED VIEW



## PARTS LIST

Index No.	Parts No.	Parts Name	Qt.	Index No.	Parts No.	Parts Name	Qt.	Index No.	Parts No.	Parts Name	Qt.
<b>FW-5SXD-7, -70</b>											
Assy No.	W-216006-02	Housing Ass'y		211	W-216211-00	Cylinder Lower Plate	1	B09	NR-2.44.5	Needle Roller	1
109	W-216109-00	Throttle Valve Bushing	1	(B33)	SP-1.64	Spring Pin	1	B11	NR-211	Needle Roller	1
110	W-215110-00	Throttle Valve	1	257	D-026257-00	Washer	1	C13	O-S30	"O" Ring	1
113	W-216113-01	Throttle Valve Rod	1	388	W-305388-00	Spring Holder	1	C14	O-S16	"O" Ring	1
117	W-216117-00	Throttle Valve Spring	1	440	W-305440-00	Ring	1	D52	SS-46	Set Screw	1
119	D-021119-00	T.V. Cover Packing	1	504	W-215504-00	Spacer <C>	1	J01	B-8	Ball	1
120	D-021120-00	Throttle Valve Cover	1	505	W-215505-01	Cam	1	Assy No.	W-215013-01	Clutch Housing Ass'y	
121	G-146121-00	Throttle Valve Lever	1	506	W-215506-00	Hammer Clutch	2	222	W-306222-00	Felt Ring	1
171	W-100171-00	Inlet Joint <PT>	1	507	W-067507-00	Clutch Pin	2	501	W-215501-00	Clutch Housing	1
171	W-100171-01	Inlet Joint <NPT>	1	508	W-215508-01	Clutch Frame	1	544	W-215544-01	Clutch Housing Bushing	1
195	W-276195-00	Sub Throttle Valve	1	509	W-215509-02	Anvil <D> <for -7>	1	207	W-067207-00	Rotor	1
201	W-216201-01	Housing	1	509	W-215509-03	Anvil <D> <for -70>	1	208	W-067208-00	Rotor Blade	5
237	W-216237-00	Muffler Pad	1	511	W-215511-00	Clutch Frame Bushing	1	209	W-067209-00	Cylinder	1
250	W-216250-01	Exhaust Cover	1	541	W-252541-00	Button Retainer Spring <F>	1	(B31)	SP-1.66	Spring Pin	2
671	W-216671-01	Exhaust Cover Joint	1	555	W-215555-01	Clutch Housing Joint	1	210	W-067210-00	Cylinder Upper Plate	1
B61	SP-2.56	Spring Pin	1	625	W-305625-00	Bit Cover	1	211	W-216211-00	Cylinder Lower Plate	1
B01	SP-320	Spring Pin	1	651	W-100651-00	Hanger	1	(B33)	SP-1.64	Spring Pin	1
C01	O-P5	"O" Ring	1	664	W-305664-00	Finder Spring	1	257	D-026257-00	Washer	1
C13	O-S30	"O" Ring	1	A01	BB-696	Ball Bearing	1	388	W-305388-00	Spring Holder	1
C14	O-S16	"O" Ring	1	A02	BB-607	Ball Bearing	1	440	W-305440-00	Ring	1
C11	O-S10	"O" Ring	1	A03	BB-6901	Ball Bearing	1	504	W-215504-00	Spacer <C>	1
Assy No.	W-215013-01	Clutch Housing Ass'y		B11	NR-413.5	Needle Roller	1	505	W-215505-01	Cam	1
222	W-306222-00	Felt Ring	1	C07	O-S12.5	"O" Ring	2	506	W-215506-01	Hammer Clutch	2
501	W-215501-00	Clutch Housing	1	J03	B-3	Ball	2	507	W-067507-00	Clutch Pin	2
544	W-215544-01	Clutch Housing Bushing	1	J04	B-3	Ball	1	508	W-215508-01	Clutch Frame	1
131	W-216131-00	Reverse Valve	1	<b>FW-5SXD-8, -80</b>							
134	W-216134-00	Reverse Valve Spring	1	Assy No.	W-217006-00	Housing Ass'y		509	W-215509-02	Anvil <D> <for -8>	1
135	W-216135-00	Reverse Valve Lever	1	117A	W-067117-00	Throttle Valve Spring	1	509	W-215509-03	Anvil <D> <for -80>	1
165	W-216165-00	Stop Ring	1	117B	D-021117-00	Throttle Valve Spring	1	555	W-215555-01	Clutch Housing Joint	1
207	W-216207-00	Rotor	1	131	W-100131-00	Reverse Valve	1	625	W-305625-00	Bit Cover	1
208	W-067208-00	Rotor Blade	5	132	W-100132-00	Reverse Valve Bushing	1	651	W-100651-00	Hanger	1
209	W-067209-00	Cylinder	1	171	W-146171-00	Inlet Joint <PT>	1	664	W-305664-00	Finder Spring	1
(B31)	SP-1.66	Spring Pin	2	201	W-217201-00	Housing	1	A01	BB-606	Ball Bearing	1
210	W-216210-00	Cylinder Upper Plate	1	250	W-216250-00	Exhaust Cover	1	A02	BB-607	Ball Bearing	1
								A03	BB-6901	Ball Bearing	1
								B12	NR-242	Needle Roller	2
								J04	B-3	Ball	1

- Assy No. denotes the assembled parts comprising of more than 1 pc. of parts. The related parts are shown in the thick frame.
- #209 and 211 are supplied together with parts shown in ( ).
- Specify parts number and quantity in ordering.

- Standard Accessories :  
FW-5SXD-7, -70.....W-17 1/4x1/4 Air Regulator 1.  
FW-5SXD-8, -80.....EH-50A 25mmx0.5m Exhaust Hose 1.  
.....IH-6A PT1/4xPT1/4 Inlet Hose 1.  
FW-5SXD-8 .....IB-202N00(For NPT only) 1.  
FW-5SXD-7, -8.....PB-2-3 75mm Driver Bit 1.