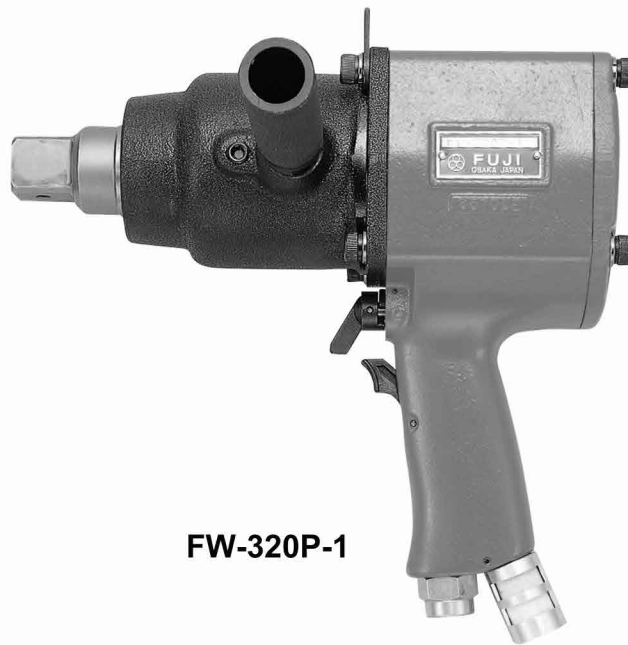


# Fuji USER MANUAL

## IMPACT WRENCHES

MODEL : FW-320P-1



FW-320P-1

### SPECIFICATIONS

Model	Capacity Bolt Size (Guidance)		Free Speed min <sup>-1</sup>	Side to Center		Square Drive Size		Overall Length (Without socket)		Mass (Without socket)		Air Consumption (Under Load)		Air Inlet Thread Size	Air Hose Size	
	mm	in		mm	in	mm	in	mm	in	kg	lb	m <sup>3</sup> /min	ft <sup>3</sup> /min		mm	in
FW-320P-1	33	1 1/4	4,800	43.5	1 23/32	25.4	1	268	10 35/64	8.0	17.6	1.00	35.3	PT or NPT 3/8	12.7	1/2

The performance figures are at 0.63MPa (6.3bar).

 Refer to "The Instructions and Warning for Safety Use" enclosed in each tool box.

Fuji Industrial Technique Co.,Ltd.

2-1-14, Kamiji, Higashinari-ku, Osaka, 537-0003 Japan

Tel : 81-6-6972-2335

Fax : 81-6-6972-2380

ASSEMBLY TOOLS

ABRASIVE TOOLS

DRILLS / TAPPERS

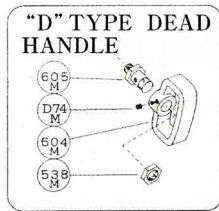
PERCUSSIVE TOOLS

AIR MOTORS

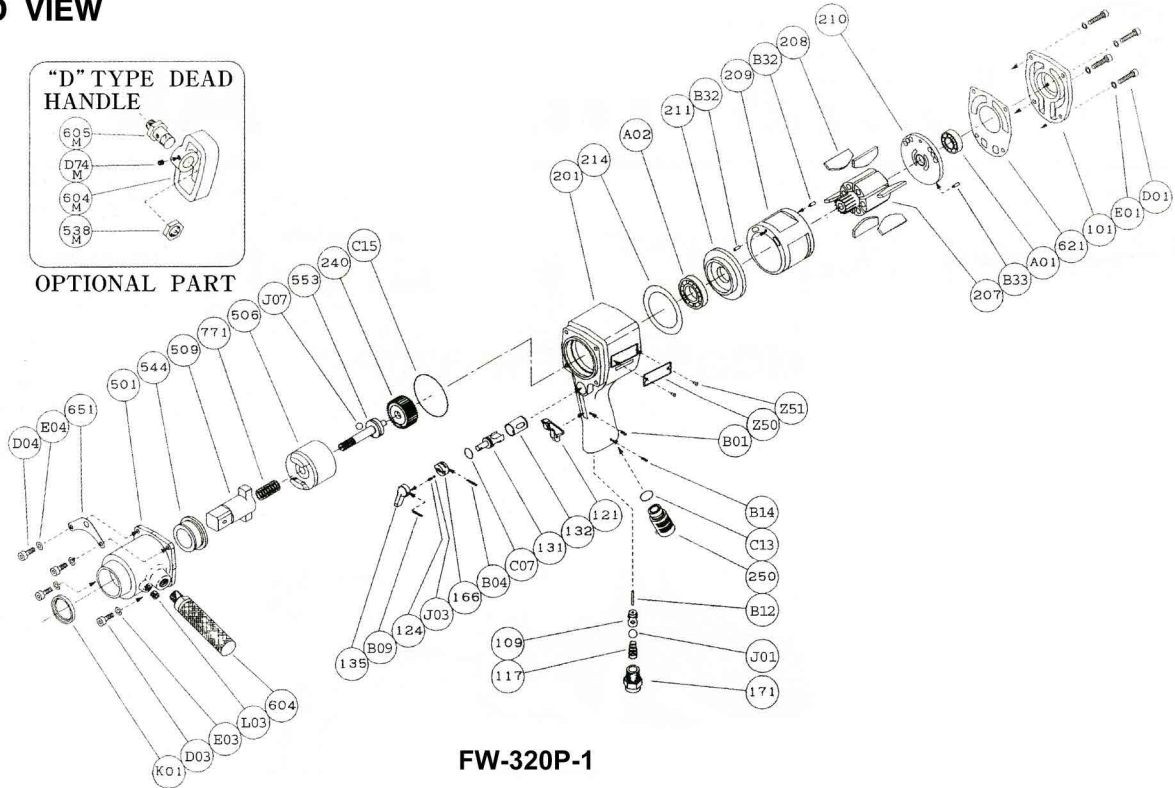
OTHER PRODUCTS

# MODEL : FW-320P-1

## EXPLODED VIEW



OPTIONAL PART



FW-320P-1

## PARTS LIST

Index No.	Parts No.	Parts Name	Qt.
Ass'y No.	W-296006-00	Housing Ass'y (PT)	
Ass'y No.	W-296006-01	Housing Ass'y (NPT)	
109	W-290109-00	Throttle Valve Bushing	1
117	W-290117-00	Throttle Valve Spring	1
121	W-252121-00	Throttle Valve Lever	1
124	G-005124-00	Knock Spring	1
131	W-260131-00	Reverse Valve	1
132	W-260132-00	Reverse Valve Bushing	1
135	W-225135-00	Reverse Valve Lever	1
166	W-290166-00	Reverse Valve Cover	1
171	W-290171-00	Inlet Joint (PT)	1
	W-290171-01	Inlet Joint (NPT)	1
201	W-296201-00	Housing	1
B01	SP-318	Spring Pin	1
B04	SP-225	Spring Pin	1
B09	SP-318	Spring Pin	1
B12	NR-326FR	Needle Roller	1
C07	O-S14	"O" Ring	1
J01	B-1/2	Ball	1
J03	B-3	Ball	1
Ass'y No.	W-291013-00	Clutch Housing Ass'y	
501	W-291501-00	Clutch Housing	1
544	W-266544-00	Clutch Housing Bushing	1
K01	OS-VB42556	Oil Seal	1
L03	PL-1/8	Plug	1
101	W-296101-00	Housing Cover	1
207	W-291207-00	Rotor	1
208	W-291208-00	Rotor Blade	6
(209)	W-291209-00	Cylinder	1
(B31)	SP-412	Spring Pin	1
B32	SP-412	Spring Pin	1
210	W-291210-00	Cylinder Upper Plate	1
211	W-291211-00	Cylinder Lower Plate	1

Index No.	Parts No.	Parts Name	Qt.
214	W-291214-00	Adjusting Washer	1
240	W-291240-00	Coupling	1
250	W-290250-00	Exhaust Cover	1
506	W-291506-00	Hammer Clutch	1
509	W-291509-00	Anvil	1
553	W-291553-00	Clutch Shaft	1
604	W-094604-00	Dead Handle	1
621	W-296621-00	Packing (A)	1
651	W-291651-00	Hanger	1
771	W-291771-00	Spring	1
A01	BB-16003	Ball Bearing	1
A02	BB-16006	Ball Bearing	1
B14	SP-326	Spring Pin	1
B33	SP-38	Spring Pin	1
C13	O-S18	"O" Ring	1
C15	O-S85	"O" Ring	1
D01	CS-830	Cap Screw	4
D03	CS-825	Cap Screw	2
D04	CS-828	Cap Screw	2
E01	SW-8	Spring Washer	4
E03	SW-8	Spring Washer	2
E04	SW-8	Spring Washer	2
J07	B-3/8	Ball	1
Z50	NP-3019	Name Plate	1
Z51	NPN-0 × 3.2	Screw Rivet	2

### OPTIONAL PART

Ass'y No.	W-014014-00	"D" Type Dead Handle Ass'y	
538M	W-014538-M	Exllagon Nut (B)	1
604M	W-014604-M	Dead Handle	1
605M	W-014605-M	Dead Handle Joint	1
D74M	SS-810C	Set Screw (Cone Point)	1

Ass'y No. denotes the assembled parts comprising of more than 1 pc. of parts. The related parts are shown in the thick frame.  
 #209 is supplied together with parts shown in ( ).

Specify parts number and quantity in ordering.  
 Standard Accessory : F-705.....5Hex Hex. Pin Wrench 1.