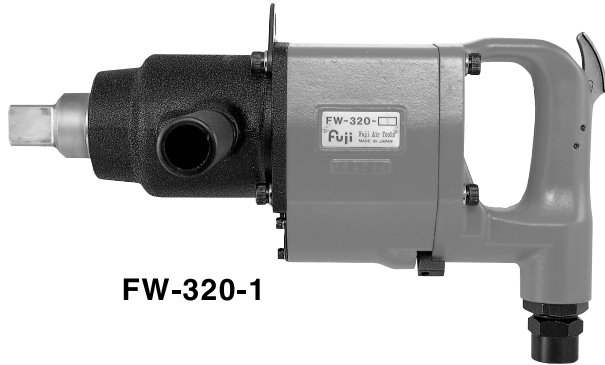


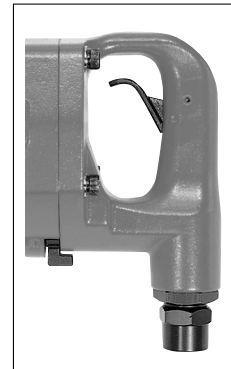
# Fuji USER MANUAL

## IMPACT WRENCHES

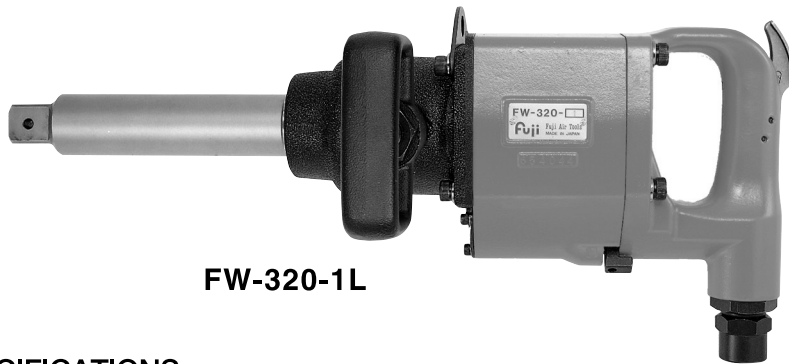
MODELS : FW-320-1, -1C, -1L, -1CL



FW-320-1



FW-320-1C  
FW-320-1CL



FW-320-1L

### SPECIFICATIONS

Model	Capacity Bolt Size (Guidance)		Rotational Frequency min-1	Side to Center		Square Drive Size		Overall Length (without socket)		Mass (without socket)		Air Consumption (Under Load)		Air Inlet Thread Size	Air Hose Size	
	mm	in		mm	in	mm	in	mm	in	kg	lb	m <sup>3</sup> /min	ft <sup>3</sup> /min		mm	in
FW-320-1	33	1 1/4	4,800	43.5	1 23/32	25.4	1	353	14 29/32	8.7	19.2	1.00	35.3	PT or NPT 1/2	12.7	1/2
FW-320-1C	33	1 1/4	4,800	43.5	1 23/32	25.4	1	353	14 29/32	8.7	19.2	1.00	35.3	PT or NPT 1/2	12.7	1/2
FW-320-1L	33	1 1/4	4,800	43.5	1 23/32	25.4	1	484	19 1/16	10.0	22.0	1.00	35.3	PT or NPT 1/2	12.7	1/2
FW-320-1CL	33	1 1/4	4,800	43.5	1 23/32	25.4	1	484	19 1/16	10.0	22.0	1.00	35.3	PT or NPT 1/2	12.7	1/2

The performance figures are at 0.63MPa (6.3bar).

Refer to "The Instructions and Warning for Safety Use" enclosed in each tool box.

Fuji Industrial Technique Co., Ltd.

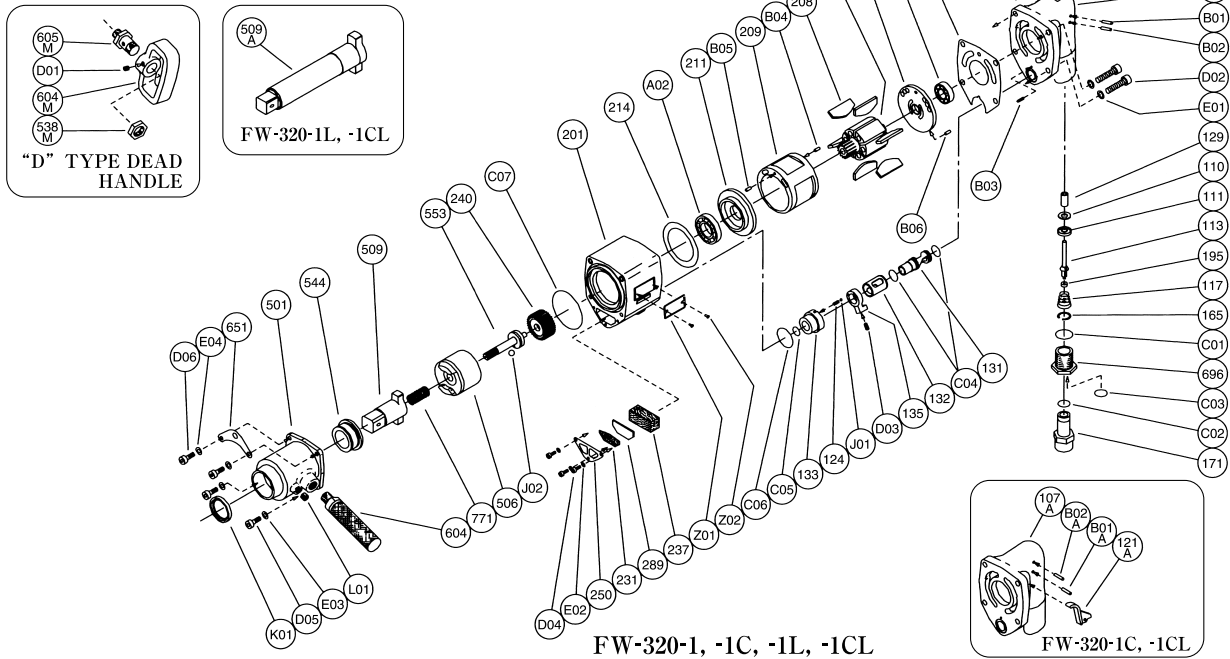
2-1-14, Kamiji, Higashinari-ku, Osaka, 537-0003 Japan

Tel : 81-6-6972-2335

Fax : 81-6-6972-2380

# MODELS : FW-320-1, -1C, -1L, -1CL

## EXPLODED VIEW



## PARTS LIST

Index No.	Parts No.	Parts Name	Qty	Index No.	Parts No.	Parts Name	Qty	Index No.	Parts No.	Parts Name	Qty
<b>FW-320-1, -1L</b>											
—	W-291002-00	Handle Ass'y		—	W-154020-00	Inlet Bushing Ass'y		506	W-291506-00	Hammer Clutch	1
107	W-291002-50	Handle	1	165	W-154165-00	Stop Ring	1	553	W-291553-00	Clutch Shaft	1
129	H-006129-00	Throttle Valve Rod Bushing	1	171	W-154171-02	Inlet Bushing (PT)	1	621	W-291621-00	Packing (A)	1
132	W-266132-00	Reverse Valve Bushing	1		W-154171-03	Inlet Bushing (NPT)	1	651	W-291651-00	Hanger	1
B03	SP-312	Spring Pin	1	696	W-154696-01	Joint Nut	1	771	W-291771-00	Spring	1
110	A-078110-01	Throttle Valve	1	C02	O-16	"O" Ring	1	A01	BB-16003	Ball Bearing	1
111	A-078111-01	Throttle Valve Washer	1	C03	O-P20	"O" Ring	1	A02	BB-16006	Ball Bearing	1
113	W-154113-00	Throttle Valve Rod	1	<b>FW-320-1L, -1CL</b>							
117	W-154117-00	Throttle Valve Spring	1	—	W-014014-00	Dead Handle Ass'y		B06	SP-38	Spring Pin	1
121	W-014121-01	Throttle Valve Lever	1	538M	W-014538-M	Hexagon Nut (B)	1	C04	O-P15	"O" Ring	2
195	W-080195-00	Sub Throttle Valve	1	604M	W-014604-M	Dead Handle	1	C05	O-P16	"O" Ring	1
B01	NR-422	Needle Roller	1	605M	W-014605-M	Dead Handle Joint	1	C06	O-S32	"O" Ring	1
B02	NR-425	Needle Roller	1	D01	SS-810C	Set Screw	1	C07	O-G85	"O" Ring	1
C01	O-G25	"O" Ring	1	<b>FW-320-1, -1L FW-320-1C, -1CL</b>							
—	W-154020-00	Inlet Bushing Ass'y		—	W-291013-00	Clutch Housing Ass'y		D02	CS-835	Cap Screw	4
165	W-154165-00	Stop Ring	1	501	W-291501-00	Clutch Housing	1	D03	SS-512D	Set Screw	1
171	W-154171-02	Inlet Bushing (PT)	1	544	W-266544-00	Clutch Housing Bushing	1	D04	CS-412	Cap Screw	3
	W-154171-03	Inlet Bushing (NPT)	1	K01	OS-VB42556	Oil Seal	1	D05	CS-825	Cap Screw	2
696	W-154696-01	Joint Nut	1	L01	PL-1/8	Plug	1	D06	CS-828	Cap Screw	2
C02	O-16	"O" Ring	1	124	G-044124-00	Knock Spring	1	E01	SW-8	Spring Washer	4
C03	O-P20	"O" Ring	1	131	W-266131-00	Reverse Valve	1	E02	SW-4	Spring Washer	3
<b>FW-320-1C, -1CL</b>											
—	W-291002-01	Handle Ass'y		133	W-266133-00	Reverse Valve Sheet	1	E03	SW-8	Spring Washer	2
107A	W-291002-51	Handle	1	135	W-266135-00	Reverse Valve Lever	1	E04	SW-8	Spring Washer	2
129	H-006129-00	Throttle Valve Rod Bushing	1	201	W-291201-00	Housing	1	J01	B-4	Ball	1
132	W-266132-00	Reverse Valve Bushing	1	207	W-291207-00	Rotor	1	J02	B-3/8	Ball	1
B03	SP-312	Spring Pin	1	208	W-291208-00	Rotor Blade	6	Z01	NP-3016	Name Plate	1
110	A-078110-01	Throttle Valve	1	209	W-291209-00	Cylinder	1	Z02	NPN-OX3.2	Screw Rivet	2
111	A-078111-01	Throttle Valve Washer	1	(B04)	SP-412	Spring Pin	1	<b>FW-320-1, -1C</b>			
113	W-154113-00	Throttle Valve Rod	1	(B05)	SP-412	Spring Pin	1	509	W-291509-00	Anvil	1
117	W-154117-00	Throttle Valve Spring	1	210	W-291210-00	Cylinder Upper Plate	1	604	W-094604-00	Dead Handle	1
121A	W-015121-A	Throttle Valve Lever	1	211	W-291211-00	Cylinder Lower Plate	1	<b>FW-320-1L, -1CL</b>			
195	W-080195-00	Sub Throttle Valve	1	214	W-291214-00	Adjusting Washer	1	509A	W-291509-01	Anvil	1
B01A	NR-422	Needle Roller	1	231	W-266231-00	Silencer Plate	1	<b>FW-320-1, -1C OPTIONAL PART "D" TYPE DEAD HANDLE</b>			
B02A	NR-425	Needle Roller	1	237	W-266237-00	Muffler Pad	1	—	W-014014-00	"D" Type Dead Handle Ass'y	
C01	O-G25	"O" Ring	1	240	W-291240-00	Coupling	1	538M	W-014538-M	Hexagon Nut (B)	1
				250	W-266250-00	Exhaust Cover	1	604M	W-014604-M	Dead Handle	1
				289	W-291289-00	Muffler Plate	1	605M	W-014605-M	Dead Handle Joint	1
								D01	SS-810C	Set Screw (Cone Point)	1

■ Standard Accessory

- The related parts are shown in a thick frame.
- #107, 107A and 209 are supplied together with parts shown in ( ).
- Specify parts number and quantity when ordering.

AC No.	Description	Qty
F-705	5Hex Hex. Pin Wrench	1