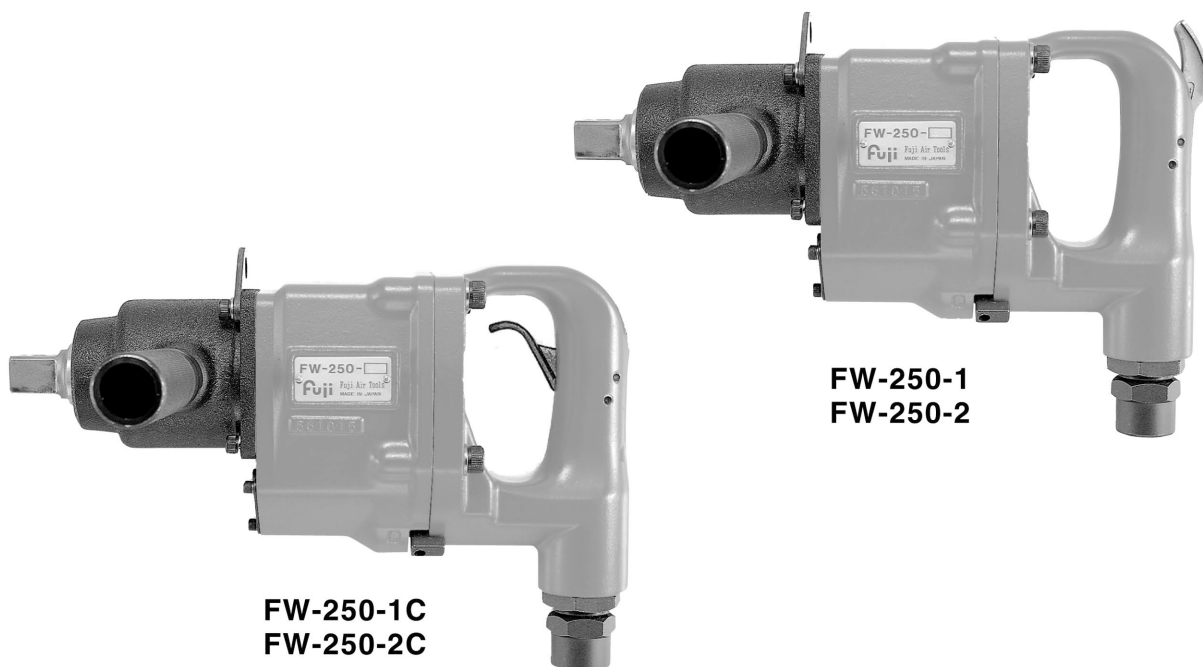


Fuji USER MANUAL

IMPACT WRENCHES

MODELS : FW-250-1, -1C, -2, -2C



SPECIFICATIONS

Model	Capacity Bolt Size (Guidance)		Rotational Frequency	Side to Center		Square Drive Size		Overall Length (without socket)		Mass (without socket)		Air Consumption (Under Load)		Air Inlet Thread Size	Air Hose Size	
	mm	in		mm	in	mm	in	mm	in	kg	lb	m ³ /min	ft ³ /min		mm	in
FW-250-1	24	1	5,000	36.5	1 7/16	25.4	1	302	11 57/64	6.0	13.2	0.7	24.7	PT or NPT 1/2	12.7	1/2
FW-250-1C	24	1	5,000	36.5	1 7/16	25.4	1	302	11 57/64	6.0	13.2	0.7	24.7	PT or NPT 1/2	12.7	1/2
FW-250-2	24	1	5,000	36.5	1 7/16	19.0	3/4	302	11 57/64	6.0	13.2	0.7	24.7	PT or NPT 1/2	12.7	1/2
FW-250-2C	24	1	5,000	36.5	1 7/16	19.0	3/4	302	11 57/64	6.0	13.2	0.7	24.7	PT or NPT 1/2	12.7	1/2

The performance figures are at 0.63MPa (6.3bar).

⚠ Refer to "The Instructions and Warning for Safety Use" enclosed in each tool box.

Fuji Industrial Technique Co., Ltd.

2-1-14, Kamiji, Higashinari-ku, Osaka, 537-0003 Japan

Tel : 81-6-6972-2335

Fax : 81-6-6972-2380

ASSEMBLY TOOLS

ABRASIVE TOOLS

DRILLS / TAPPERS

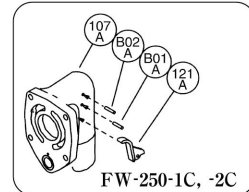
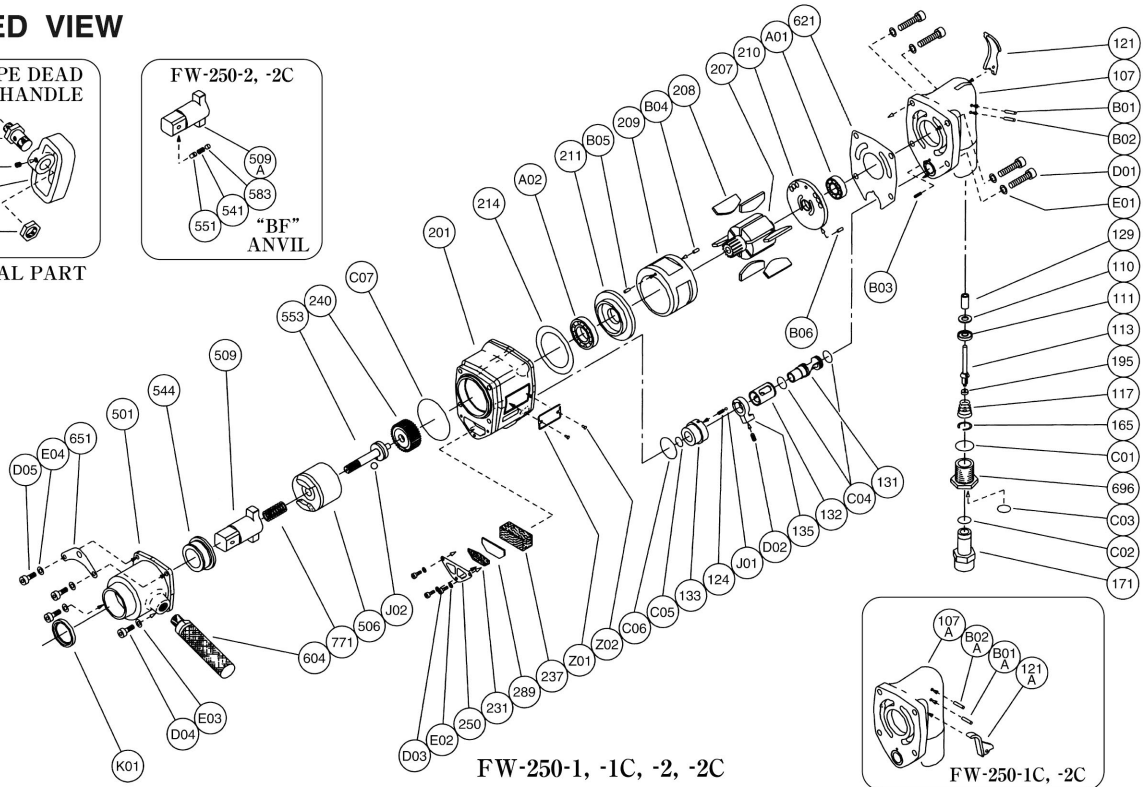
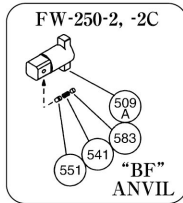
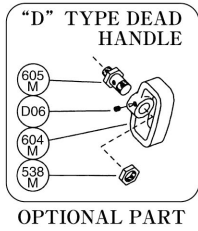
PERCUSSIVE TOOLS

AIR MOTORS

OTHER PRODUCTS

MODELS : FW-250-1, -1C, -2, -2C

EXPLODED VIEW



PARTS LIST

Index No.	Parts No.	Parts Name	Qty	Index No.	Parts No.	Parts Name	Qty	Index No.	Parts No.	Parts Name	Qty
FW-250-1, -2											
—	W-295002-00	Handle Ass'y		—	W-154020-00	Inlet Bushing Ass'y		771	W-290771-00	Spring	1
107	W-295002-50	Handle	1	165	W-154165-00	Stop Ring	1	A01	BB-6003	Ball Bearing	1
(129	H-006129-00	Throttle Valve Rod Bushing	1	171	W-154171-02	Inlet Bushing (PT)	1	A02	BB-EE9	Ball Bearing	1
132	W-266132-00	Reverse Valve Bushing	1	696	W-154696-01	Joint Nut	1	C04	O-P15	"O" Ring	2
B03	SP-312	Spring Pin	1	C02	O-16	"O" Ring	1	C05	O-P16	"O" Ring	1
110	A-078110-01	Throttle Valve	1	C03	O-P20	"O" Ring	1	C06	O-S32	"O" Ring	1
111	A-078111-01	Throttle Valve Washer	1	FW-250-1, -1C							
113	W-154113-00	Throttle Valve Rod	1	FW-250-2, -2C							
117	W-154117-00	Throttle Valve Spring	1	—	W-290013-00	Clutch Housing Ass'y		D01	CS-835	Cap Screw	4
121	W-014121-01	Throttle Valve Lever	1	501	W-291501-00	Clutch Housing	1	D02	SS-512D	Set Screw	4
195	W-080195-00	Sub Throttle Valve	1	544	W-290544-00	Clutch Housing Bushing	1	D03	CS-412	Cap Screw	3
B01	NR-422	Needle Roller	1	K01	OS-VB32455	Oil Seal	1	D04	CS-620	Cap Screw	2
B02	NR-425	Needle Roller	1	124	G-044124-00	Knock Spring	1	D05	CS-622	Cap Screw	2
C01	O-G25	"O" Ring	1	131	W-266131-00	Reverse Valve	1	E01	SW-8	Spring Washer	4
—	W-154020-00	Inlet Bushing Ass'y		133	W-266133-00	Reverse Valve Sheet	1	E02	SW-4	Spring Washer	3
165	W-154165-00	Stop Ring	1	135	W-266135-00	Reverse Valve Lever	1	E03	SW-6	Spring Washer	2
171	W-154171-02	Inlet Bushing (PT)	1	201	W-295201-00	Housing	1	E04	SW-6	Spring Washer	2
	W-154171-01	Inlet Bushing (NPT)	1	207	W-290207-00	Rotor	1	J01	B-4	Ball	1
696	W-154696-01	Joint Nut	1	208	W-290208-00	Rotor Blade	6	J02	B-3/8	Ball	1
C02	O-16	"O" Ring	1	209	W-290209-00	Cylinder	1	Z01	NP-3018	Name Plate	1
C03	O-P20	"O" Ring	1	(B04)	SP-410	Spring Pin	1	Z02	NPN-OX3.2	Screw Rivet	2
FW-250-1C, -2C											
—	W-295002-01	Handle Ass'y		(B05)	SP-410	Spring Pin	1	FW-250-1, -1C			
107A	W-295002-51	Handle	1	210	W-290210-00	Cylinder Upper Plate	1	509	W-290509-00	Anvil	1
(129	H-006129-00	Throttle Valve Rod Bushing	1	(B06)	SP-38	Spring Pin	1	FW-250-2, -2C			
132	W-266132-00	Reverse Valve Bushing	1	211	W-290211-00	Cylinder Lower Plate	1	509A	W-290509-02	Anvil (B)	1
B03	SP-312	Spring Pin	1	214	W-290214-00	Adjusting Washer	1	(541	W-192541-00	Button Retainer Spring (F)	1
110	A-078110-01	Throttle Valve	1	231	W-266231-00	Silencer Plate	1	551	W-192551-00	Plug	1
111	A-078111-01	Throttle Valve Washer	1	237	W-266237-00	Muffler Pad	1	583	W-192583-00	Retainer Button (F)	1
113	W-154113-00	Throttle Valve Rod	1	240	W-290240-00	Coupling	1	OPTIONAL PART			
117	W-154117-00	Throttle Valve Spring	1	250	W-266250-00	Exhaust Cover	1	"D" TYPE DEAD HANDLE			
121A	W-015121-A	Throttle Valve Lever	1	289	W-291289-00	Muffler Plate	1	—	W-014014-00	"D" Type Dead Handle Ass'y	
195	W-080195-00	Sub Throttle Valve	1	506	W-290506-00	Hammer Clutch	1	538M	W-014538-M	Exlagon Nut (B)	1
B01A	NR-422	Needle Roller	1	553	W-290553-00	Clutch Shaft	1	604M	W-014604-M	Dead Handle	1
B02A	NR-425	Needle Roller	1	604	W-094604-00	Dead Handle	1	605M	W-014605-M	Dead Handle Joint	1
C01	O-G25	"O" Ring	1	621	W-295621-00	Packing (A)	1	D06	SS-810C	Set Screw (Cone Point)	1
				651	W-295651-00	Hanger	1				

- The related parts are shown in a thick frame.
- #107, 209, 210 and 509A are supplied together with parts shown in ().
- Specify parts number and quantity when ordering.