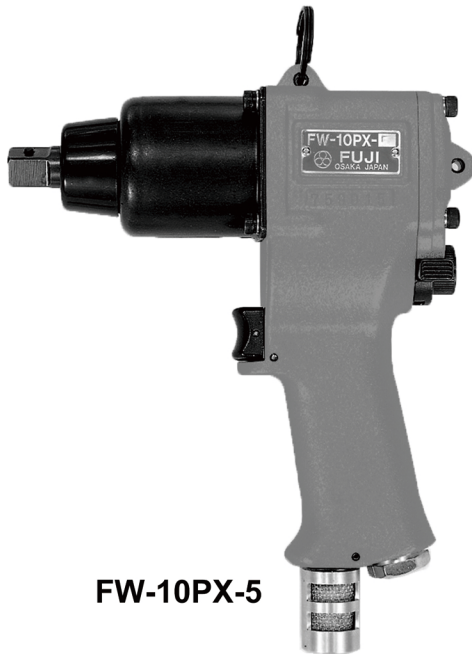
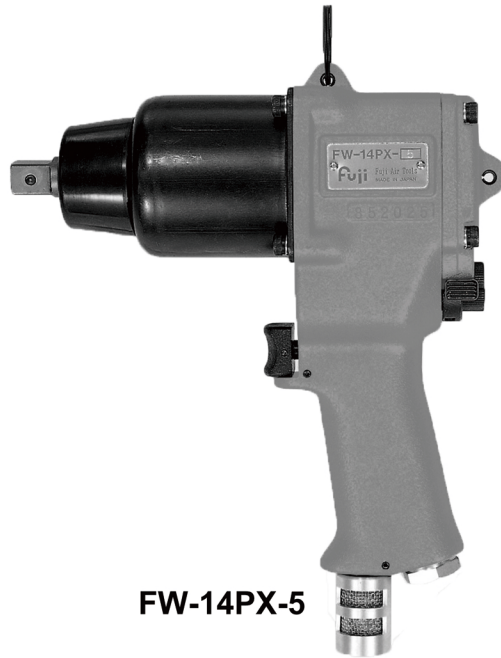


IMPACT WRENCHES

MODELS : FW-10PX-5 & FW-14PX-5



FW-10PX-5



FW-14PX-5

SPECIFICATIONS

MODEL	Bolt Size	Square Drive Size	Recommended Torque Range	Max. Torque	Rotational Frequency	Overall Length (without socket)	Mass (without socket)	Air Consumption (At Load)	Air Inlet Thread Size	Air Hose Size
	mm	mm	N·m	N·m	min ⁻¹	mm	kg	m ³ /min		mm
FW-10PX-5	M10	12.7	45~65	80	8,000	182	2.3	0.4	PT or NPT1/4	9.5
FW-14PX-5	M14	12.7	80~130	150	6,500	197	3.0	0.4	PT or NPT1/4	9.5

The performance figures are at 0.63MPa (6.3bar).

⚠ Refer to "The Instructions and Warning for Safety Use" enclosed in each tool box.

Fuji Industrial Technique Co.,Ltd.

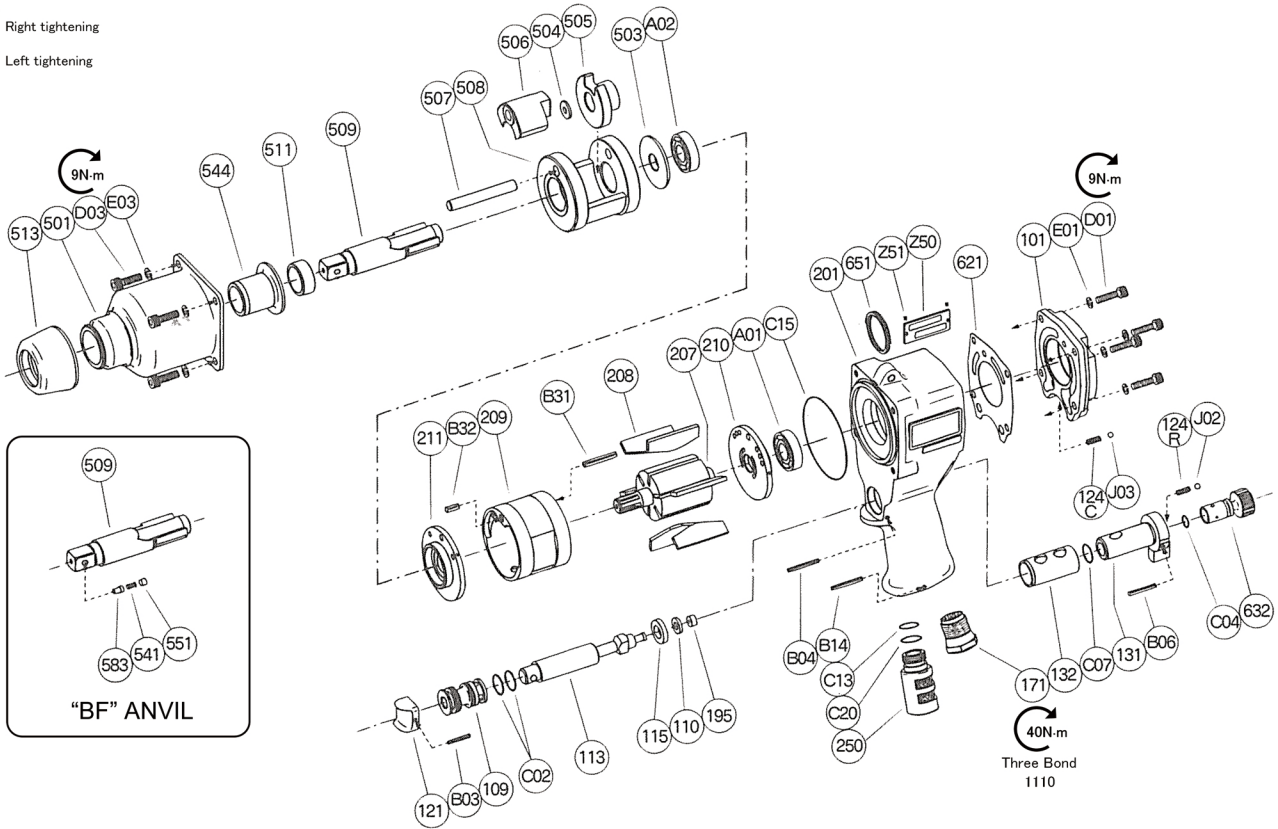
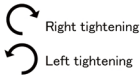
2-1-14, Kamiji, Higashinari-ku, Osaka, 537-0003 Japan

Tel : 81-6-6972-2335

Fax : 81-6-6972-2380

MODLES : FW-10PX-5 & FW-14PX-5

EXPLODED VIEW



PARTS LIST

Index No.	Parts No.	Parts Name	Qty
FW-10PX-5			
—	W-140006-00	Housing Ass'y <PT>	
—	W-140006-01	Housing Ass'y <NPT>	
109	W-125109-00	Throttle Valve Bushing	1
115	W-125115-00	Throttle Valve Sheet	1
121	W-125121-00	Throttle Valve Lever	1
171	W-017171-02	Inlet Joint <PT>	1
	W-017171-01	Inlet Joint <NPT>	1
201	W-140006-50	Housing	1
(132)	W-125132-00	Reverse Valve Bushing	1
B03	SP-2.518	Spring Pin	1
B04	SP-325	Spring Pin	1
C02	O-S15	"O"Ring	2
—	W-125009-00	Reverse Valve Ass'y	
124R	G-044124-00	Knock Spring	1
131	W-125131-00	Reverse Valve	1
632	W-125632-00	Regulator	1
B06	SP-322	Spring Pin	1
C04	O-P9	"O"Ring	1
C07	O-P14	"O"Ring	1
J02	B-4	Ball	1
—	W-140008-00	Throttle Valve Rod Ass'y	
110	W-125110-00	Throttle Valve	1
113	W-140113-00	Throttle Valve Rod	1
195	W-017195-00	Sub Throttle Valve	1
FW-14PX-5			
—	W-141006-00	Housing Ass'y <PT>	
—	W-141006-02	Housing Ass'y <NPT>	
109	W-125109-00	Throttle Valve Bushing	1
115	W-125115-00	Throttle Valve Sheet	1
121	W-125121-00	Throttle Valve Lever	1
171	W-017171-02	Inlet Joint <PT>	1
	W-017171-01	Inlet Joint <NPT>	1
201	W-141006-50	Housing	1
(132)	W-125132-00	Reverse Valve Bushing	1
B03	SP-2.518	Spring Pin	1
B04	SP-325	Spring Pin	1
C02	O-S15	"O"Ring	2
—	W-125009-00	Reverse Valve Ass'y	
124R	G-044124-00	Knock Spring	1
131	W-125131-00	Reverse Valve	1
632	W-125632-00	Regulator	1
B06	SP-322	Spring Pin	1
C04	O-P9	"O"Ring	1
C07	O-P14	"O"Ring	1
J02	B-4	Ball	1
—	W-140008-00	Throttle Valve Rod Ass'y	
110	W-125110-00	Throttle Valve	1
113	W-140113-00	Throttle Valve Rod	1
195	W-017195-00	Sub Throttle Valve	1

Index No.	Parts No.	Parts Name	Qty
FW-10PX-5			
—	W-027013-00	Clutch Housing Ass'y	
501	W-027501-00	Clutch Housing	1
544	W-027544-00	Clutch Housing Bushing	1
101	W-140101-00	Housing Cover	1
(124C)	G-044124-00	Knock Spring	1
B-4		Ball	1
207	W-133207-00	Rotor	1
208	W-027208-00	Rotor Blade	6
209	W-027209-00	Cylinder	1
(B31)	SP-320	Wire Guide (C)	1
(B32)	SP-38	Front Positioning Base	1
210	W-133210-00	Cylinder Upper Plate	1
211	W-027211-00	Cylinder Lower Plate	1
250	W-140250-00	Exhaust Cover	1
503	W-027503-00	Spacer (B)	1
504	W-140504-00	Spacer (C)	1
505	W-140505-02	Cam	1
506	W-140506-02	Hammer Clutch	1
507	W-027507-00	Clutch Pin	1
508	W-027508-01	Clutch Frame	1
509	W-027509-A	Anvil <P>	1
511	W-027511-00	Clutch Frame Bushing	1
513	W-027513-00	Clutch Housing Cap	1
621	W-133621-00	Packing (A)	1
651	W-181651-00	Hanger (Horizontal)	1
A01	BB-EE3	Ball Bearing	1
A02	BB-EE4	Ball Bearing	1
B14	SP-325	Spring Pin	1
C13	O-S14	"O"Ring	1
C15	O-S53	"O"Ring	1
C20	O-S15	"O"Ring	1
D01	CS-522	Cap Screw	4
D03	CS-516	Cap Screw	4
E01	SW-5	Spring Washer	4
E03	SW-5	Spring Washer	4
Z50	NP-2023	Name Plate	1
Z51	NPN-0X3.2	Screw Rivet	2
"BF" ANVIL			
509	W-140509-13	Anvil <BF>	1
(541)	W-224541-00	Button Retainer Spring	1
551	W-224551-00	Plug	1
583	W-224583-00	Retainer Button (F)	1

Index No.	Parts No.	Parts Name	Qty
FW-14PX-5			
—	W-017013-00	Clutch Housing Ass'y	
501	W-017501-00	Clutch Housing	1
544	W-017544-00	Clutch Housing Bushing	1
101	W-141101-00	Housing Cover	1
(124C)	G-044124-00	Knock Spring	1
(J03)	B-4	Ball	1
207	W-125207-00	Rotor	1
208	W-017208-00	Rotor Blade	6
209	W-017209-00	Cylinder	1
(B31)	SP-414	Wire Guide (C)	1
(B32)	SP-410	Front Positioning Base	1
210	W-017210-00	Cylinder Upper Plate	1
211	W-017211-00	Cylinder Lower Plate	1
250	W-140250-00	Exhaust Cover	1
503	W-125503-00	Spacer (B)	1
504	W-141504-00	Spacer (C)	1
505	W-141505-02	Cam	1
506	W-141506-02	Hammer Clutch	1
507	W-017507-00	Clutch Pin	1
508	W-017508-01	Clutch Frame	1
509	W-017509-D	Anvil <P>	1
511	W-017511-00	Clutch Frame Bushing	1
513	W-017513-00	Clutch Housing Cap	1
621	W-125621-00	Packing (A)	1
651	W-181651-00	Hanger (Horizontal)	1
A01	BB-EE4	Ball Bearing	1
A02	BB-EE4	Ball Bearing	1
B14	SP-325	Spring Pin	1
C13	O-S14	"O"Ring	1
C15	O-S63	"O"Ring	1
C20	O-S15	"O"Ring	1
D01	CS-520	Cap Screw	4
D03	CS-516	Cap Screw	4
E01	SW-5	Spring Washer	4
E03	SW-5	Spring Washer	4
Z50	NP-2026	Name Plate	1
Z51	NPN-0X3.2	Screw Rivet	2
"BF" ANVIL			
509	W-141509-09	Anvil <BF>	1
(541)	W-224541-00	Button Retainer Spring	1
551	W-224551-00	Plug	1
583	W-224583-00	Retainer Button (F)	1

- The related parts are shown in thick frame.
- #101, #201, #209 and #509(BF Anvil) are supplied together with parts shown in ().
- Specify parts number and quantity when ordering.