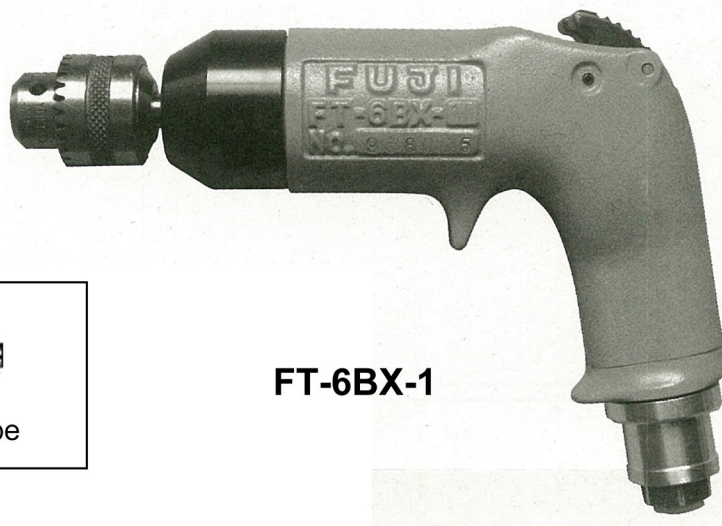


# Fuji USER MANUAL

## TAPPERS

### MODEL : FT-6BX-1



FT-6BX-1




Tapping Chuck Type

### SPECIFICATIONS

Model	Chuck Capacity	Spindle Type	Free speed		Max. Torque	Max. Output	Max. Air Consumption	Overall Length	Mass	Air Inlet Thread Size	Air Hose Size	
			Right	Left								
Type	mm		min <sup>-1</sup>	min <sup>-1</sup>	N·m	kW	m <sup>3</sup> /min	mm	kg		mm	
FT-6BX-1	Drill Chuck (6)	6.5	J.T.No.1	2,000	2,000	6.0	0.3	0.56	206	1.3	Rc or NPT 1/4	8.0
FT-6BX-1	Drill Chuck (8)	8	J.T.No.1	2,000	2,000	6.0	0.3	0.56	206	1.3	Rc 1/4	8.0
FT-6BX-1	Tapping Chuck	8	J.T.No.1	2,000	2,000	6.0	0.3	0.56	241	1.5	Rc or NPT 1/4	8.0

The performance figures are at 0.63MPa (6.3bar).

 Refer to "The Instructions and Warning for Safety Use" enclosed in each tool box.

Fuji Industrial Technique Co.,Ltd.

2-1-14, Kamiji, Higashinari-ku, Osaka, 537-0003 Japan

Tel : 81-6-6972-2335

Fax : 81-6-6972-2380

ASSEMBLY TOOLS

ABRASIVE TOOLS

DRILLS / TAPPERS

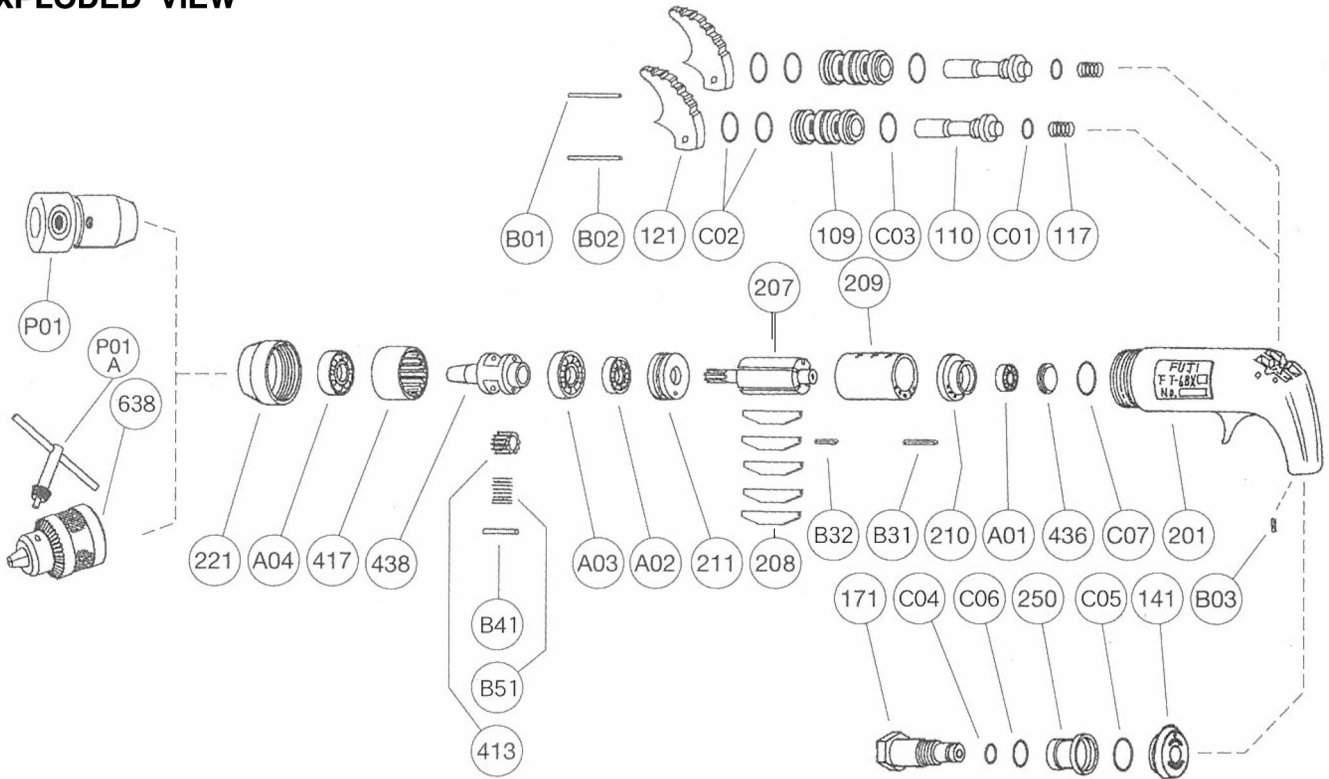
PERCUSSIVE TOOLS

AIR MOTORS

OTHER PRODUCTS

# MODEL : FT-6BX-1

## EXPLODED VIEW



FT-6BX-1

## PARTS LIST

Index No.	Parts No.	Parts Name	Qty
FT-6BX-1			
—	T-008006-00	Housing Ass'y <Rc>	
109	T-008109-00	Throttle Valve Bushing	2
110	T-008110-00	Throttle Valve	2
117	D-021117-00	Throttle Valve Spring	2
121	T-008121-00	Throttle Valve Lever	2
141	T-008141-00	Handle Washer	1
171	T-008171-00	Inlet Joint <Rc>	1
201	T-008201-00	Housing	1
250	G-140250-00	Exhaust Cover	1
B01	SP-340	Spring Pin	1
B02	NR-338	Needle Roller	1
B03	SP-2.58	Spring Pin	1
C01	O-P3	"O"Ring	2
C02	O-S12	"O"Ring	4
C03	O-P10	"O"Ring	2
C04	O-S8	"O"Ring	1
C05	O-S28	"O"Ring	1
C06	O-S16	"O"Ring	1
207	T-007207-00	Rotor	1
208	G-103208-00	Rotor Blade	5
209	T-007209-00	Cylinder	1
(B31)	SP-212	Spring Pin	1
(B32)	SP-28	Spring Pin	1

Index No.	Parts No.	Parts Name	Qty
210	T-007210-00	Cylinder Upper Plate	1
211	T-007211-00	Cylinder Lower Plate	1
221	T-008221-00	Spindle Bearing Cover	1
413	T-007413-00	No.1 Planet Gear	2
(B51)	NR-19.5	Needle Roller	24
417	T-008417-00	No.1 Internal Gear	2
436	D-008436-00	Bearing Holder	1
438	T-008438-00	Spindle	1
A01	BB-606	Ball Bearing	1
A02	BB-609	Ball Bearing	1
A03	BB-EE4	Ball Bearing	1
A04	BB-6001	Ball Bearing	1
B41	NR-316.8	Needle Roller	1
C07	O-P16	"O"Ring	1
FT-6BX-1(Drill Chuck 6)			
638	DCK-6.5J	Drill Chuck	1
(P01A)	DCK-6.5H	Drill Chuck Handle	1
FT-6BX-1(Drill Chuck 8)			
638	DCK-8J	Drill Chuck	1
(P01A)	DCK-10H	Drill Chuck Handle	1
FT-6BX-1(Tapping Chuck)			
P01	TCK-6	Tapping Chuck	1

■ Standard Accessories

AC No.	Description	Qty
IH-8B	Inlet Hose (for Rc)	1
IH-8BN	Inlet Hose (for NPT)	1
EH-50A	Exhaust Hose	1
F-706	6mm Hex. Pin Wrench ( for Tapping Chuck)	1
IB-202N00	Inlet Bushing (for NPT )	1

- The related parts are shown in a thick frame.
- #209 and #413 and #638 are supplied together with parts shown in ( ).
- Specify parts number and quantity when ordering.