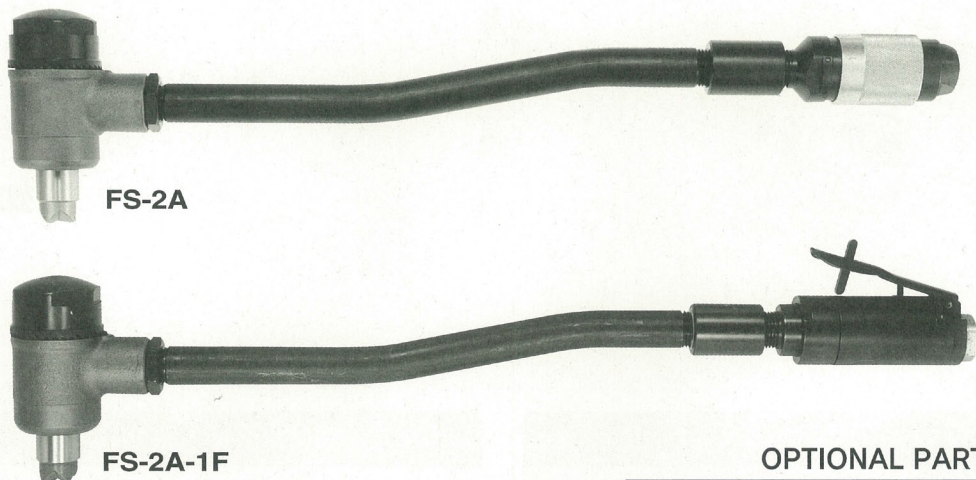


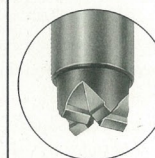
Fuji USER MANUAL

SCALING HAMMERS

MODELS : FS-2A,-2A-1F



OPTIONAL PART



Tungsten Carbide Tipped Piston is available at request.

SPECIFICATIONS

Model	Number of Cylinder	Blows	Piston Diameter		Stroke		Angle Height		Overall Length		Mass		Air Consumption (At Load)		Air Inlet Thread Size	Air Hose Size	
		Hz	mm	in	mm	in	mm	in	mm	in	kg	lb	min	min	in	mm	in
FS-2A	1	133	30	1 ³ / ₁₆	16	5/8	94	3 ¹¹ / ₁₆	507	19 ³¹ / ₃₂	2.5	5.5	0.25	8.8	PT or NPT 3/8	9.5	3/8
FS-2A-1F	1	133	30	1 ³ / ₁₆	16	5/8	94	3 ¹¹ / ₁₆	532	20 ⁶¹ / ₆₄	2.5	5.5	0.25	8.8	PT or NPT 3/8	9.5	3/8

The performance figures are at 0.63MPa (6.3bar).



Refer to "The Instructions and Warning for Safety Use" enclosed in each tool box.

Fuji Industrial Technique Co.,Ltd.

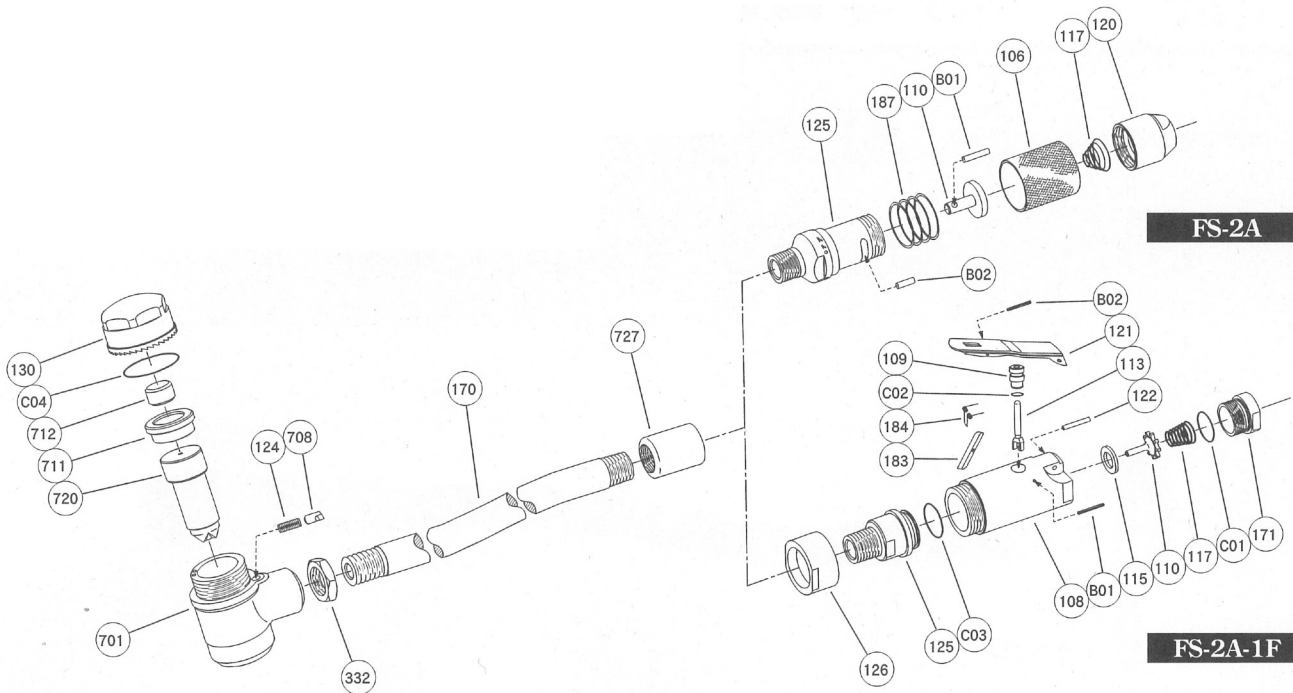
2-1-14, Kamiji, Higashinari-ku, Osaka, 537-0003 Japan

Tel : 81-6-6972-2335

Fax : 81-6-6972-2380

MODELS : FS-2A, -2A-1F

EXPLODED VIEW



PARTS LIST

Index No.	Parts No.	Parts Name	Qt.
FS-2A			
Ass'y No.	S-012004-01	Throttle Valve Stem Ass'y <PT>	
Ass'y No.	S-012004-00	Throttle Valve Stem Ass'y <NPT>	
106	G-082106-01	Throttle Valve Handle	1
110	G-044110-00	Throttle Valve	1
117	G-044117-00	Throttle Valve Spring	1
120	G-044120-A	Throttle Valve Cover <PT>	1
	G-044120-N	Throttle Valve Cover <NPT>	1
125	S-012125-01	Throttle Valve Stem	1
187	A-011187-01	Throttle Valve Handle Spring	1
B01	NR-420	Needle Roller	1
B02	NR-412.8	Needle Roller	1
FS-2A-1F			
Ass'y No.	Y-020003-00	Throttle Valve Body Ass'y <PT>	
Ass'y No.	Y-020003-02	Throttle Valve Body Ass'y <NPT>	
108	Y-020108-00	Throttle Valve Body	1
109	Y-020109-00	Throttle Valve Bushing	1
110	Y-020110-00	Throttle Valve	1
113	Y-020113-00	Throttle Valve Rod	1
115	Y-020115-00	Throttle Valve Sheet	1
117	Y-020117-00	Throttle Valve Spring	1
121	G-144121-02	Throttle Valve Lever	1
122	H-001122-00	Throttle Valve Lever Pin	1
125	Y-020125-00	Throttle Valve Stem	1
126	Y-020126-00	Throttle Valve Stem Nut	1
171	Y-020171-00	Inlet Joint <PT>	1

Index No.	Parts No.	Parts Name	Qt.
	Y-020171-01	Inlet Joint <NPT>	1
183	G-144183-02	Lock Key	1
184	G-144184-00	Lock Spring	1
B01	SP-220	Spring Pin	1
B02	SP-218	Spring Pin	1
C01	O-S22	"O" Ring	1
C02	O-S8	"O" Ring	1
C03	O-S25	"O" Ring	1
FS-2A			
FS-2A-1F			
124	H-042124-00	Knock Spring	1
130	H-042130-00	Cap	1
170	H-021170-00	Pipe	1
332	H-021332-00	Lock Nut	1
701	H-042701-00	Cylinder	1
708	H-042708-00	Locking Clutch	1
711	H-021711-00	Cylinder Cover	1
712	H-042712-00	Damper	1
720	H-042720-00	Piston	1
727	H-021727-00	Socket Joint	1
C04	O-S40	"O" Ring	1
OPTIONAL PART			
720	H-042720-C	Piston (With Tungsten Carbide Tip)	1

□ Ass'y No. denotes no. of the assembled parts comprising of more than 1 pc. of parts. □ Specify parts number and quantity in ordering.
The related parts are shown in the thick frame.