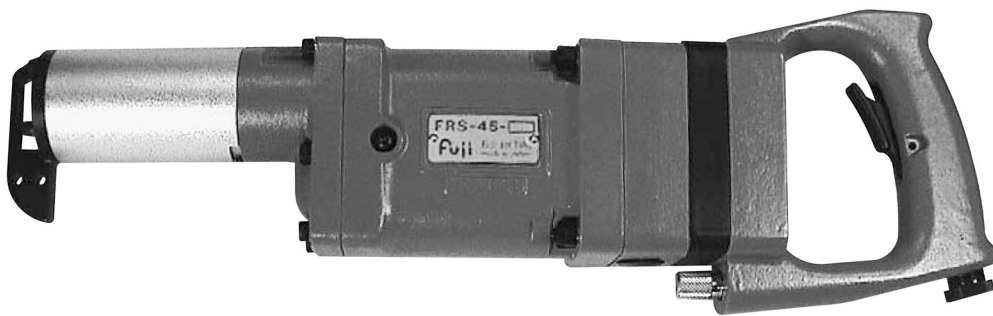


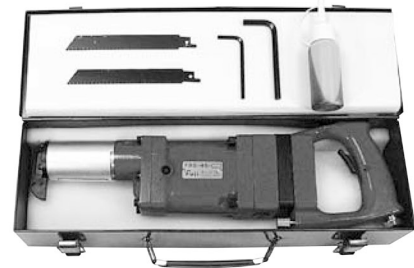
# Fuji USER MANUAL

## AIR SAW

MODEL : FRS-45



FRS-45



### SPECIFICATIONS

| Model         | Stroke Per Second | Stroke    |                | Overall Length |                 | Mass       |            | Air Consumption     |                      | Air Inlet Thread Size | Air Hose Size |             |
|---------------|-------------------|-----------|----------------|----------------|-----------------|------------|------------|---------------------|----------------------|-----------------------|---------------|-------------|
|               | Hz                | mm        | in             | mm             | in              | kg         | lb         | m <sup>3</sup> /min | ft <sup>3</sup> /min |                       | mm            | in          |
| <b>FRS-45</b> | <b>20</b>         | <b>45</b> | <b>1 25/32</b> | <b>421</b>     | <b>16 37/64</b> | <b>2.9</b> | <b>6.4</b> | <b>0.4</b>          | <b>14.1</b>          | Rc or NPT 1/4         | <b>8</b>      | <b>5/16</b> |

The performance figures are at 0.63 MPa (6.3 bar).



Refer to "The Instructions and Warning for Safety Use" enclosed in each tool box.

Fuji Industrial Technique Co.,Ltd.

2-1-14, Kamiji, Higashinari-ku, Osaka, 537-0003 Japan

Tel : 81-6-6972-2335

Fax : 81-6-6972-2380

ASSEMBLY TOOLS

ABRASIVE TOOLS

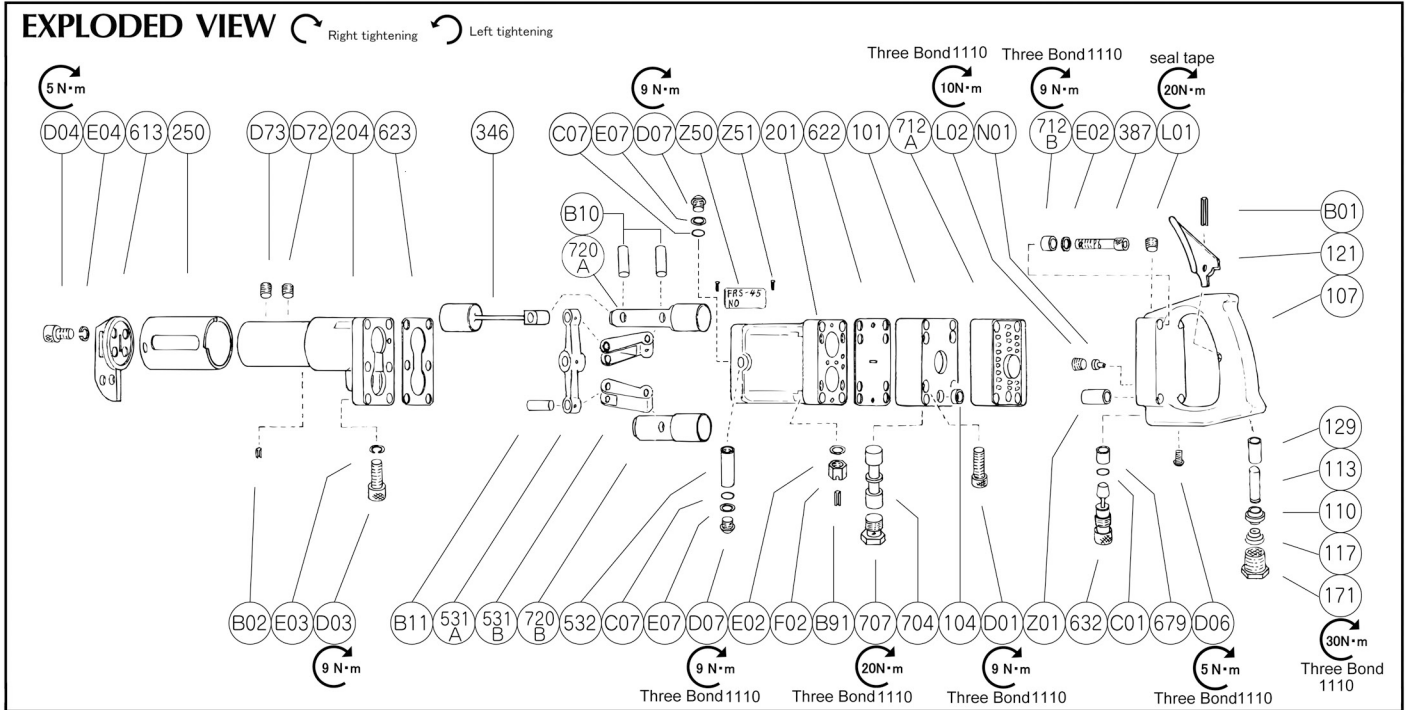
DRILLS/TAPPERS

PERCUSSIVE TOOLS

AIR MOTORS

OTHER PRODUCTS

# MODEL: FRS-45



## PARTS LIST

| Index No. | Parts No.          | Parts Name                      | Qty |
|-----------|--------------------|---------------------------------|-----|
| —         | <b>S-112002-00</b> | <b>Handle Ass'y &lt;Rc&gt;</b>  |     |
| —         | <b>S-112002-01</b> | <b>Handle Ass'y &lt;NPT&gt;</b> |     |
| 107       | S-112107-00        | Handle                          | 1   |
| 110       | H-001110-02        | Throttle Valve                  | 1   |
| 113       | H-063113-00        | Throttle Valve Rod              | 1   |
| 117       | D-001117-00        | Throttle Valve Spring           | 1   |
| 121       | W-162121-00        | Throttle Valve Lever            | 1   |
| 129       | H-014129-00        | Throttle Valve Rod Bushing      | 1   |
| 171       | IB-3020S0          | Inlet Bushing <Rc>              | 1   |
|           | IB-302NS0          | Inlet Bushing<NPT>              | 1   |
| 632       | S-101632-00        | Regulator                       | 1   |
| 679       | S-101679-00        | Regulator Bushing               | 1   |
| B01       | SP-316             | Spring Pin                      | 1   |
| C01       | O-S6               | "O" Ring                        | 1   |
| D06       | CS-48B             | Cap Screw                       | 1   |
| L01       | PL-1/4             | Plug                            | 1   |
| L02       | PL-1/8             | Plug                            | 1   |
| N01       | GN-BIN # D26D      | Grease Nipple                   | 1   |
| 101       | S-112101-00        | Housing Cover                   | 1   |
| 104       | S-112104-00        | Bushing                         | 1   |
| 201       | S-112201-00        | Housing                         | 1   |
| 204       | S-112204-00        | Housing Lower Cover             | 1   |
| 250       | S-101250-00        | Exhaust Cover                   | 1   |
| 346       | S-101346-00        | Chuck Body                      | 1   |
| 387       | S-112387-00        | Locking Bolt                    | 4   |
| 531A      | S-101531-00        | Link                            | 1   |
| 531B      | S-101531-01        | Link                            | 2   |
| 532       | S-101532-00        | Link Spindle                    | 1   |

| Index No. | Parts No.   | Parts Name      | Qty |
|-----------|-------------|-----------------|-----|
| 613       | S-101613-00 | Guide           | 1   |
| 622       | S-112622-00 | Packing <B>     | 1   |
| 623       | S-101623-00 | Packing <C>     | 1   |
| 704       | S-101704-00 | Valve           | 1   |
| 707       | S-101707-00 | Valve Cover     | 2   |
| 712A      | S-112712-00 | Damper <A>      | 1   |
| 712B      | S-112712-01 | Damper <B>      | 4   |
| 720A      | S-101720-00 | Piston <A>      | 1   |
| 720B      | S-101720-01 | Piston <B>      | 1   |
| B02       | SP-36       | Spring Pin      | 1   |
| B10       | GP-626GCH   | Grooved Pin     | 3   |
| B11       | GP-612BCH   | Grooved Pin     | 2   |
| B91       | SP-1.610    | Spring Pin      | 4   |
| C07       | O-P6        | "O" Ring        | 2   |
| D01       | CS-530      | Cap Screw       | 4   |
| D03       | CS-522      | Cap Screw       | 6   |
| D04       | CS-412      | Cap Screw       | 4   |
| D07       | CS-58B      | Cap Screw       | 2   |
| D72       | SS-814C     | Set Screw       | 1   |
| D73       | SS-812      | Set Screw       | 1   |
| E02       | PW-6K       | Plain Washer    | 8   |
| E03       | SW-5        | Spring Washer   | 6   |
| E04       | SW-4        | Spring Washer   | 4   |
| E07       | PW-5        | Plain Washer    | 2   |
| F02       | SN-6(1)     | Slotted Nut <1> | 4   |
| Z01       | IT-6827     | Inlet Tube      | 1   |
| Z50       | NP-3007     | Name Plate      | 1   |
| Z51       | NPN-0X3.2   | Screw Rivet     | 2   |

- The related parts are shown in the thick frame.
- Specify parts number and quantity when ordering.

### Standard Accessories

| AC No.    | Description         | Qty |
|-----------|---------------------|-----|
| SAW-2018  | Saw Blade           | 1   |
| SAW-2024  | Saw Blade           | 1   |
| F-704     | 4mm Hex. Pin Wrench | 1   |
| F-706     | 6mm Hex. Pin Wrench | 1   |
| AO-30     | Oil(30cc)           | 1   |
| CASE-T432 | Steel Case          | 1   |

### Optional Saw Blade

| AC No.   | L(mm) | W  | Cutting Materials                                |
|----------|-------|----|--|
| SAW-2014 | 200   | 14 | steel plate, pipe, copper, brass, plastic, slate |
| SAW-2514 | 250   | 14 | steel plate, pipe, copper, brass, plastic, slate |
| SAW-2518 | 250   | 18 | steel plate, pipe                                |
| SAW-3014 | 300   | 14 | steel plate, pipe, copper, brass, plastic, slate |
| SAW-3018 | 300   | 18 | steel plate, pipe,                               |

- ※ W=The number of teeth per inch.
- ※ Using cutting fluid extends life of blade. A mixture of turpentine and kerosene with spindle oil, soapsuds, grease at the rate of 7 to 3 is recommended.