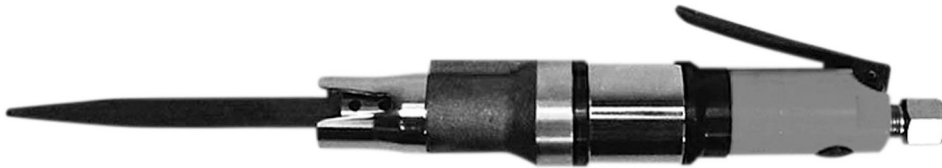


# Fuji USER MANUAL

## AIR FILES & AIR SAW

MODELS : FRF-4-1, -2



FRF-4-1, -2

### FILE BLADE FOR FRF-4-1

1		
2		
3		
4		
5		

Model	Tool Name	Stroke Per Minute SPM	Stroke mm
1	*FILE-4P	Pillar	150
2	*FILE-4H	Half Round	
3	*FILE-4R	Round	
4	*FILE-4C	Triangle	
5	*FILE-4S	Square	

\*Accessories included in FRF-4-1

### SAW BLADE FOR FRF-4-2

Model	Stroke	
	L mm	mm
*SAW-4	123	25

\*Accessories included in FRF-4-2  
\* W = The number of teeth per inch.

### SPECIFICATIONS

Model	Tool Name	Stroke Per Minute	Stroke		Chuck Capacity		Overall Length		Weight	Air Inlet Thread Size	Air Hose Size	
			mm	in	mm	in	mm	in			mm	in
FRF-4-1	File	1,600	12	1/2	4x13x20	5/8x1/2x3/32	208	8 3/16	0.8	1/4	6	1/4
FRF-4-2	Saw	1,600	12	1/2	2x13x20	5/8x1/2x3/32	212	8 1/2	0.8	1/4	6	1/4

- Standard equipments : Hose nipple and 2 hex. wrenches. A set of the above files are provided in case of FRF-4-1.
  - Specifications, standard equipments, designs and parts in this leaflet are subject to change without notice.
  - **CAUTION** : Handle with care to avoid dropping and bumping.
- The performance figures are at 0.63 MPa (6.3 bar).



Refer to "The Instructions and Warning for Safety Use" enclosed in each tool box.

Fuji Industrial Technique Co.,Ltd.

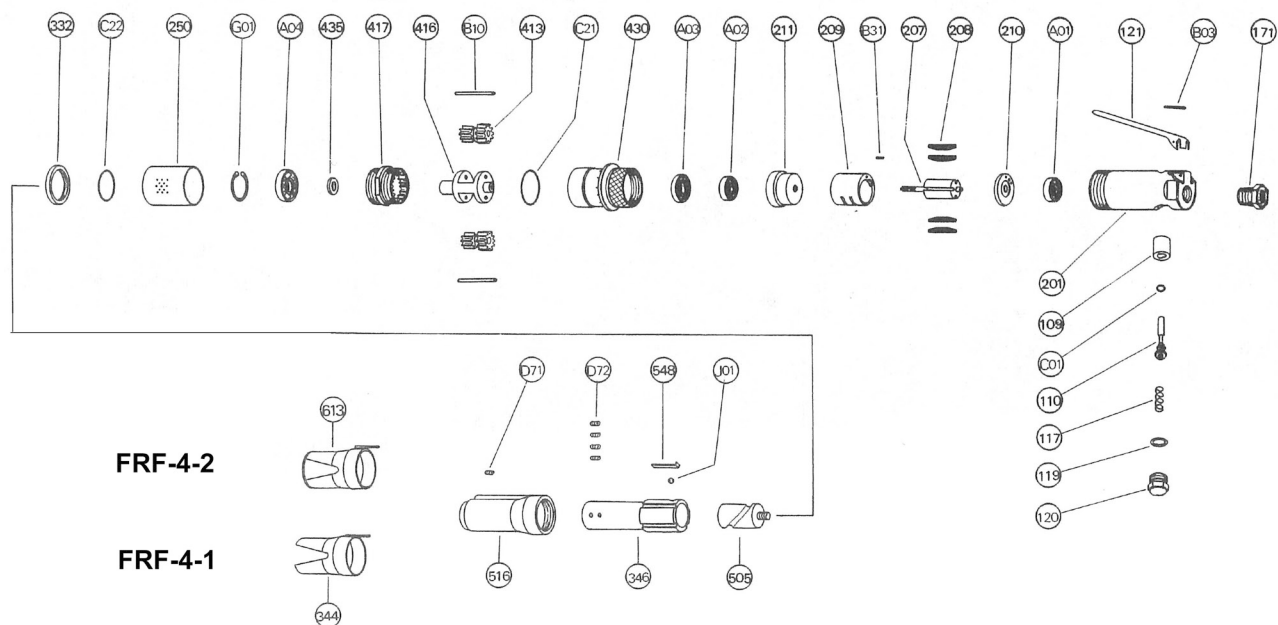
2-1-14, Kamiji, Higashinari-ku, Osaka, 537-0003 Japan

Tel : 81-6-6972-2335

Fax : 81-6-6972-2380

# MODELS : FRF-4-1, -2

## EXPLODED VIEW



## PARTS LIST

Index No.	Part No.		Part Name	Index No.	Part No.		Part Name
	FRF-4-1	FRF-4-2			FRF-4-1	FRF-4-2	
<b>HANDLE PART</b>				346	S-001346-00	S-001346-01	Chuck Body
				413	S-001413-00	←	Planet Gear (2)
109	D-021109-00	←	Throttle Valve Bushing	416	S-001416-00	←	Planet Gear Flame
110	D-021110-A	←	Throttle Valve	417	S-001417-00	←	Internal Gear
117	D-021117-00	←	Throttle Valve Spring	430	S-001430-00	←	Gear Case
119	D-021119-00	←	Throttle Valve Cover Packing	435	D-001435-00	←	Thrust Washer
120	D-021120-00	←	Throttle Valve Cover	505	S-001505-00	←	Cam
121	D-021121-A	←	Throttle Valve Lever	516	S-001516-00	←	Cam Case
171	IB-202000	←	Inlet Bushing (PT)	548	S-001548-00	S-001548-02	Ball Washer
171	IB-202N00	←	Inlet Bushing (NPT)	613	←	S-001613-01	Guide
201	D-021201-00	←	Housing	A01	BB-634	←	Ball Bearing
B03	SP-320	←	Spring Pin	A02	BB-626	←	Ball Bearing
C01	O-P3	←	"O" Ring	A03	BB-EE3	←	Ball Bearing
All of the above parts can be used interchangeable on the all the models.				A04	BB-EE4	←	Ball Bearing
				B10	NR-329	←	Needle Roller
207	D-021207-00	←	Rotor	B31	SP-26	←	Spring Pin
208	D-021208-00	←	Rotor Blade (4)	C21	O-G30	←	"O" Ring
209	D-021209-00	←	Cylinder	C22	O-G25	←	"O" Ring
210	D-021210-00	←	Cylinder Upper Plate	D71	SS-35	←	Set Screw
211	D-021211-00	←	Cylinder Lower Plate	D72	SS-58	←	Set Screw (4)
250	S-001250-00	←	Exhaust Cover	D72	←	SS-58	Set Screw (2)
332	S-001332-00	←	Lock Nut	G01	SR-R28	←	Snap Ring
344	S-001344-00	←	Chuck Cover	J01	B-6	←	Steel Ball

If the performance seems to have gone down after several months of use, disassemble the tool for inspecting the wear of the rotor blades and the cylinder and the eccentricity and play of the ball bearings. When you find them too big, please replace the parts with new ones.

### Standard Accessories (FRF-4-1)

AC No.	Description	Qty
F-701	1.5mm Hex. Pin Wrench	1
F-702	2.5mm Hex. Pin Wrench	1
FILE-4P	PILLER	1
FILE-4H	HALF ROUND	1
FILE-4R	ROUND	1
FILE-4C	CONT	1
FILE-4S	SQUARE	1

### Standard Accessories (FRF-4-2)

AC No.	Description	Qty
F-701	1.5mm Hex. Pin Wrench	1
F-702	2.5mm Hex. Pin Wrench	1
SAW-4	SAW BLADE	1