

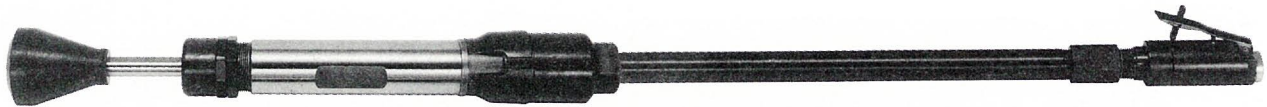
# Fuji USER MANUAL

## SAND RAMMERS

MODELS : FR-32, -32-2F



FR-32



FR-32-2F

### SPECIFICATIONS

| Model           | Blows | Piston Diameter |         | Stroke |    | Butt Diameter |    | Overall Length (Min.) | Mass (about) | Air Consumption (At Load) |                      | Air Inlet Thread Size | Air Hose Size |     |
|-----------------|-------|-----------------|---------|--------|----|---------------|----|-----------------------|--------------|---------------------------|----------------------|-----------------------|---------------|-----|
|                 |       | mm              | in      | mm     | in | mm            | in |                       |              | mm                        | in                   |                       | mm            | in  |
| Standard        | Hz    |                 |         |        |    |               |    | mm                    | kg           | m <sup>3</sup> /min       | ft <sup>3</sup> /min |                       |               |     |
| <b>FR-32</b>    | 12    | 32              | 1 17/64 | 127    | 5  | 75            | 3  | 1086                  | 9.3          | 0.8                       | 28.2                 | Rc or NPT 1/2         | 12.7          | 1/2 |
| <b>FR-32-2F</b> | 12    | 32              | 1 17/64 | 127    | 5  | 75            | 3  | 1090                  | 9.1          | 0.8                       | 28.2                 | Rc or NPT 3/8         | 12.7          | 1/2 |

The performance figures are at 0.63MPa (6.3bar).



Refer to "The Instructions and Warning for Safety Use" enclosed in each tool box.

Fuji Industrial Technique Co.,Ltd.

2-1-14, Kamiji, Higashinari-ku, Osaka, 537-0003 Japan

Tel : 81-6-6972-2335

Fax : 81-6-6972-2380

ASSEMBLY TOOLS

ABRASIVE TOOLS

DRILLS / TAPPERS

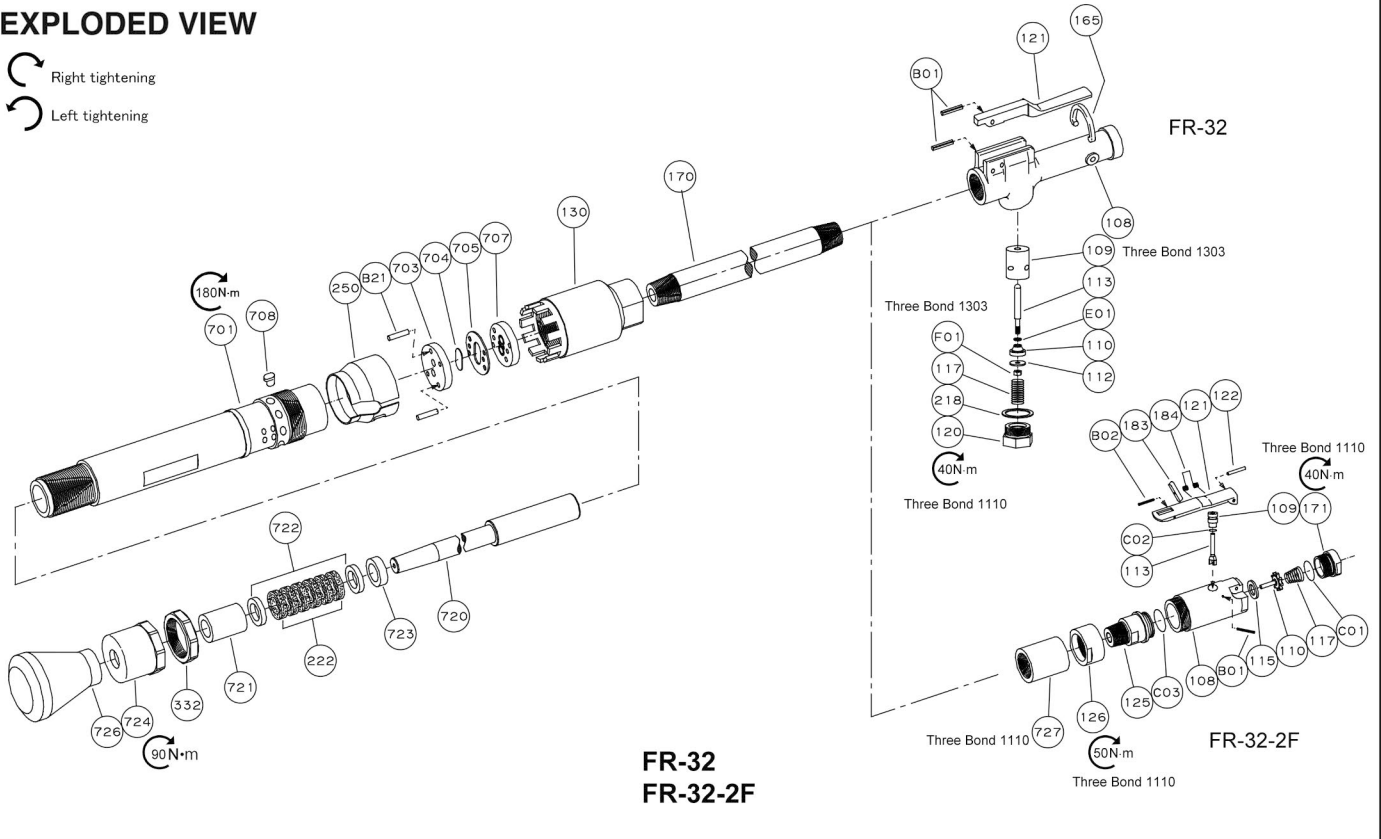
PERCUSSIVE TOOLS

AIR MOTORS

OTHER PRODUCTS

# MODELS : FR-32, -32-2F

## EXPLODED VIEW



## PARTS LIST

| Index No.    | Parts No.   | Parts Name                | Qty |
|--------------|-------------|---------------------------|-----|
| <b>FR-32</b> |             |                           |     |
| —            | R-007002-00 | Handle Ass'y              |     |
| 170          | R-007170-00 | Pipe                      | 1   |
| —            | R-006003-00 | Throttle Valve Body Ass'y | 1   |
| 108          | R-006003-50 | Throttle Valve Body       | 1   |
| (109)        | R-006109-00 | Throttle Valve Bushing    | 1   |
| 117          | R-006117-00 | Throttle Valve Spring     | 1   |
| 120          | R-006120-00 | Throttle Valve Cover      | 1   |
| 121          | R-006121-00 | Throttle Valve Lever      | 1   |
| 165          | R-006165-00 | Stop Ring                 | 1   |
| 218          | G-044218-00 | Packing                   | 1   |
| B01          | SP-422      | Spring Pin                | 2   |
| —            | R-006008-00 | Throttle Valve Rod Ass'y  |     |
| 110          | D-005110-01 | Throttle Valve            | 1   |
| 112          | D-005112-00 | Throttle Valve Collar     | 1   |
| 113          | R-006113-00 | Throttle Valve Rod        | 1   |
| E01          | PW-4        | Plain Washer              | 1   |
| F01          | N-4         | Nut                       | 1   |
| 130          | R-007130-00 | Cap                       | 1   |
| 222          | R-007222-00 | Felt Ring                 | 6   |
| 250          | R-007250-00 | Exhaust Cover             | 1   |
| 332          | R-007332-00 | Lock Nut                  | 1   |
| 701          | R-007701-00 | Cylinder                  | 1   |
| 703          | R-007703-00 | Valve Sheet               | 1   |
| 704          | H-006704-00 | Valve                     | 1   |
| 705          | H-006705-00 | Valve Case                | 1   |
| 707          | R-007707-00 | Valve Cover               | 1   |
| 708          | R-007708-A  | Locking Clutch            | 1   |
| 720          | R-007720-00 | Piston                    | 1   |
| 721          | R-007721-00 | Piston Bushing            | 1   |
| 722          | R-007722-00 | Leather Packing           | 2   |
| 723          | R-007723-00 | Packing Sheet             | 1   |
| 724          | R-007724-00 | Grand                     | 1   |
| 726          | R-4         | Rubber Butt               | 1   |
| B21          | P-523       | Pin                       | 2   |

- The related parts are shown in a thick frame.
- #108(FR-32) is supplied together with parts shown in ( ).
- Specify parts number and quantity when ordering.

■ Standard Accessory(FR-32 N)

| AC No.    | Description                 | Qty |
|-----------|-----------------------------|-----|
| IB-404N00 | Inlet Bushing(For NPT only) | 1   |

| Index No.       | Parts No.   | Parts Name                      | Qty |
|-----------------|-------------|---------------------------------|-----|
| <b>FR-32-2F</b> |             |                                 |     |
| —               | R-007002-01 | Handle Ass'y <Rc>               |     |
| —               | R-007002-02 | Handle Ass'y <NPT>              |     |
| 170             | R-007170-00 | Pipe                            | 1   |
| —               | Y-020003-01 | Throttle Valve Body Ass'y <Rc>  |     |
| —               | Y-020003-03 | Throttle Valve Body Ass'y <NPT> |     |
| 108             | Y-020108-00 | Throttle Valve Body             | 1   |
| 109             | Y-020109-00 | Throttle Valve Bushing          | 1   |
| 110             | Y-020110-00 | Throttle Valve                  | 1   |
| 113             | Y-020113-00 | Throttle Valve Rod              | 1   |
| 115             | Y-020115-00 | Throttle Valve Sheet            | 1   |
| 117             | Y-020117-00 | Throttle Valve Spring           | 1   |
| 121             | G-144121-02 | Throttle Valve Lever            | 1   |
| 122             | H-001122-00 | Throttle Valve Lever Pin        | 1   |
| 125             | Y-020125-01 | Throttle Valve Stem             | 1   |
| 126             | Y-020126-00 | Throttle Valve Stem Nut         | 1   |
| 171             | Y-020171-00 | Inlet Joint <Rc>                | 1   |
| —               | Y-020171-01 | Inlet Joint <NPT>               |     |
| 183             | G-144183-02 | Lock Key                        | 1   |
| 184             | G-144184-00 | Lock Spring                     | 1   |
| B01             | SP-220      | Spring Pin                      | 1   |
| B02             | SP-218      | Spring Pin                      | 1   |
| C01             | O-S22       | "O"Ring                         | 1   |
| C02             | O-S8        | "O"Ring                         | 1   |
| C03             | O-S25       | "O"Ring                         | 1   |
| 130             | R-007130-00 | Cap                             | 1   |
| 222             | R-007222-00 | Felt Ring                       | 6   |
| 250             | R-007250-00 | Exhaust Cover                   | 1   |
| 332             | R-007332-00 | Lock Nut                        | 1   |
| 701             | R-007701-05 | Cylinder                        | 1   |
| 703             | R-007703-00 | Valve Sheet                     | 1   |
| 704             | H-006704-00 | Valve                           | 1   |
| 705             | H-006705-00 | Valve Case                      | 1   |
| 707             | R-007707-00 | Valve Cover                     | 1   |
| 708             | R-007708-A  | Locking Clutch                  | 1   |
| 720             | R-007720-00 | Piston                          | 1   |
| 721             | R-007721-00 | Piston Bushing                  | 1   |
| 722             | R-007722-00 | Leather Packing                 | 2   |
| 723             | R-007723-00 | Packing Sheet                   | 1   |
| 724             | R-007724-00 | Grand                           | 1   |
| 726             | R-4         | Rubber Butt                     | 1   |
| 727             | R-007727-00 | Socket Joint                    | 1   |
| B21             | P-523       | Pin                             | 2   |