

Fuji USER MANUAL

SAND RAMMERS

MODELS : FR-22L, -22L-2F



FR-22L



FR-22L-2F

SPECIFICATIONS

Model	Blows Par Second (about)	Piston Diameter		Stroke (about)		Butt Diameter		Overall Length (about)	Mass (about)	Air Consumption Under Load (about)		Air Inlet Thread Size	Air Hose Size	
	Hz	mm	in	mm	in	mm	in	mm	kg	Nm ² /min	Nft ² /min	PT or NPT	mm	in
FR-22L	17	22.0	55/64	64	2 ³³ /64	51	2 ¹ /64	621 ~ 726	3.3	0.50	17.7	1/4"	9.5	3/8
FR-22L-2F	17	22.0	55/64	64	2 ³³ /64	51	2 ¹ /64	611 ~ 716	3.5	0.50	17.7	3/8"	9.5	3/8

The performance figures are at 0.63MPa (6.3bar).



Refer to "The Instructions and Warning for Safety Use" enclosed in each tool box.

Fuji Industrial Technique Co.,Ltd.

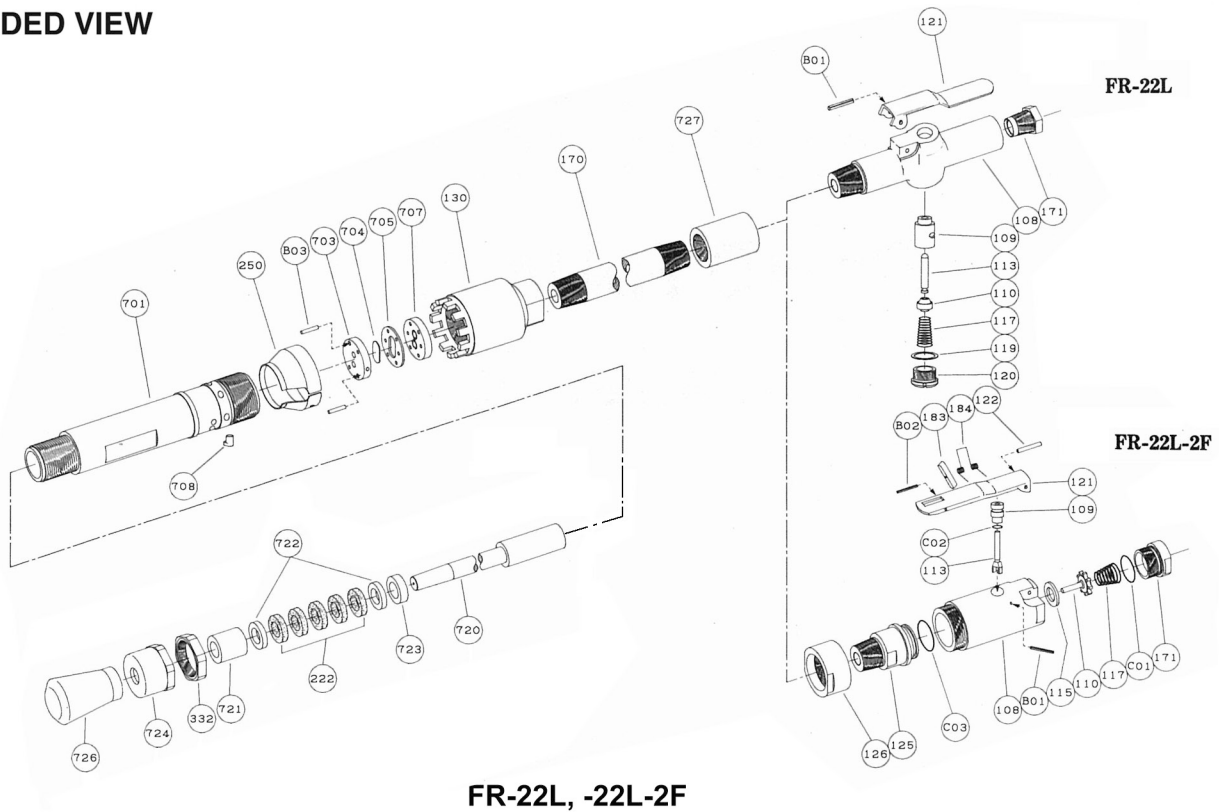
2-1-14, Kamiji, Higashinari-ku, Osaka, 537-0003 Japan

Tel : 81-6-6972-2335

Fax : 81-6-6972-2380

MODELS : FR-22L, -22L-2F

EXPLODED VIEW



FR-22L, -22L-2F

PARTS LIST

Index No.	Parts No.	Parts Name	Qt.
FR-22L			
CP No.	R-002002-00	Handle CP	
170	R-002170-00	Pipe	1
727	H-021727-00	Socket Joint	1
CP No.	R-002003-00	Throttle Valve Body CP	
108	R-002003-50	Throttle Valve Body	1
(109)	G-028109-00	Throttle Valve Bushing	1
117	D-001117-00	Throttle Valve Spring	1
119	G-028119-00	T.V. Cover Packing	1
120	G-028120-00	Throttle Valve Cover	1
121	R-002121-00	Throttle Valve Lever	1
171	IB-3020S0	Inlet Bushing < PT >	1
171	IB-302NS0	Inlet Bushing < NPT >	1
B01	SP-320	Spring Pin	1
CP No.	G-028008-00	Throttle Valve Rod CP	
110	H-001110-02	Throttle Valve	1
113	G-028113-00	Throttle Valve Rod	1
FR-22L -2F			
CP No.	R-002002-01	Handle CP	
170	R-002170-00	Pipe	1
727	H-021727-00	Socket Joint	1
CP No.	Y-020003-00	Throttle Valve CP	
108	Y-020108-00	Throttle Valve Body	1
109	Y-020109-00	Throttle Valve Bushing	1
110	Y-020110-00	Throttle Valve	1
113	Y-020113-00	Throttle Valve Rod	1
115	Y-020115-00	Throttle Valve Sheet	1
117	Y-020117-00	Throttle Valve Spring	1
121	G-144121-02	Throttle Valve Lever	1
122	H-001122-00	Throttle Valve Lever Pin	1
125	Y-020125-00	Throttle Valve Stem	1
126	Y-020126-00	Throttle Valve Stem Nut	1
171	Y-020171-00	Inlet Joint < PT >	1
171	Y-020171-01	Inlet Joint < NPT >	1
183	G-144183-02	Lock Key	1
184	G-144184-00	Lock Spring	1
B01	SP-220	Spring Pin	1
B02	SP-218	Spring Pin	1
C01	O-S22	"O" Ring	1
C02	O-S8	"O" Ring	1
C03	O-S25	"O" Ring	1

Index No.	Parts No.	Parts Name	Qt.
FR-22L, -22L-2F			
130	R-004130-00	Cap	1
222	R-003222-00	Felt Ring	5
250	R-003250-00	Exhaust Cover	1
332	R-003332-00	Lock Nut	1
701	R-004701-04	Cylinder (FR-22L)	1
	R-004701-05	Cylinder (FR-22L-2F)	1
703	H-004703-00	Valve Sheet	1
704	H-004704-00	Valve	1
705	H-004705-00	Valve Case	1
707	H-004707-00	Valve Cover	1
708	R-003708-A	Locking Clutch	1
720	R-003720-00	Piston	1
721	R-003721-00	Piston Bushing	1
722	R-003722-00	Leather Packing	2
723	R-003723-00	Packing Sheet	1
724	R-003724-00	Grand	1
726	R-2	Rubber Butt	1
B03	P-316	Pin	2

□ CP No. denotes the assembled parts comprising of more than 1 pc. of parts. The related parts are shown in the thick frame.

□ #108 is supplied together with parts shown in ().

□ Specify parts number and quantity When ordering.