

# Fuji USER MANUAL

## STRAIGHT GRINDERS

MODELS : FG-8H-2,-2M



FG-8H-2



FG-8H-2M

### SPECIFICATIONS

Model	Max. Dia (Grinding Wheel)		Max. Free Speed rpm	Spindle Thread Size in	Overall Length (about)		Mass (about)		Air Consumption at Max. Output (about)		Air Inlet Thread Size PT or NPT	Air Hose Size	
	mm	in			mm	in	kg	lb	Nm <sup>3</sup> /min	Nft <sup>3</sup> /min		mm	in
FG-8H-2	180×25×15.8	7×1×5/8	5,300	5/8-11	472	18 <sup>19</sup> /32	5.4	11.8	1.60	56.5	1/2	12.7	1/2
FG-8H-2M	180×25×15.8	7×1×5/8	5,300	5/8-11	556	21 <sup>57</sup> /64	5.5	12.1	1.60	56.5	1/2	12.7	1/2

The performance figures are at 0.63 MPa(6.3bar).



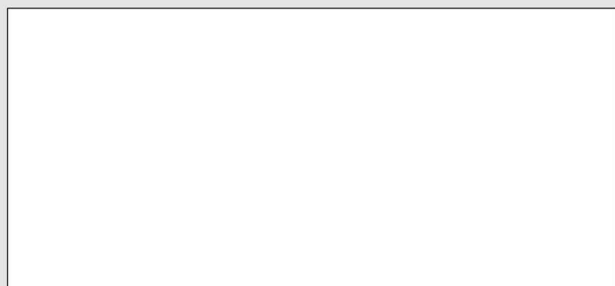
Refer to "The Instructions and Warning for Safety Use" enclosed in each tool box.

Fuji Industrial Technique Co.,Ltd.

2-1-14, Kamiji, Higashinari-ku, Osaka, 537-0003 Japan

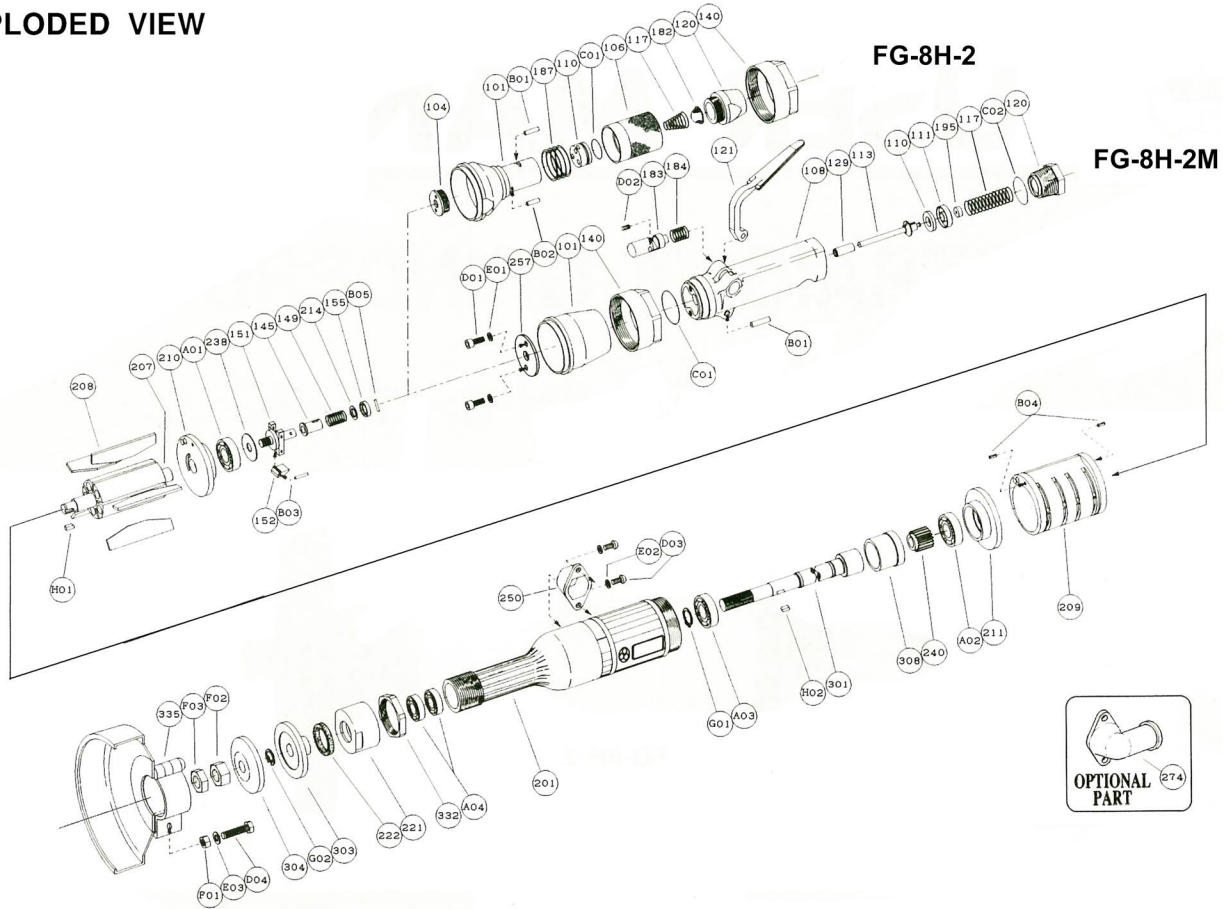
Tel : 81-6-6972-2335

Fax : 81-6-6972-2380



# MODELS : FG-8H-2, -2M

## EXPLODED VIEW



## PARTS LIST

Index No.	Parts No.	Parts Name	Qt.	Index No.	Parts No.	Parts Name	Qt.	Index No.	Parts No.	Parts Name	Qt.
<b>FG-8H-2</b>				<b>FG-8H-2, -2M</b>							
CP No.	G-160001-00	Housing Cover CP		CP No.	G-160010-00	Governor Weight CP		335	G-075335-00	Wheel Guard	1
101	G-160101-00	Housing Cover	1	151	A-193151-00	Governor Cage	1	D04	HS-625	Hexagon Bolt	1
104	A-077104-01	Bushing	1	152	G-160152-00	Governor Weight	2	E03	SW-6	Spring Washer	1
106	A-077106-03	Throttle Valve Handle	1	B03	GP-2.524GCH	Grooved Pin	2	F01	N-6	Nut	1
110	A-077110-00	Throttle Valve	1	140	G-160140-00	Cup Nut (For FG-8H-2)	1	A01	BB-6202MN	Ball Bearing	1
117	A-077117-00	Throttle Valve Spring	1	145	A-077145-00	Governor Valve	1	A02	BB-6202	Ball Bearing	1
120	G-070120-00	Throttle Valve Cover (PT)	1	149	A-084149-00	Governor Valve Spring	1	A03	BB-6004	Ball Bearing	1
120	G-070120-01	Throttle Valve Cover (NPT)	1	155	A-069155-00	Governor Valve Spring Holder	1	A04	BB-6003	Ball Bearing	2
182	W-057182-00	Strainer	1	201	G-160201-00	Housing	1	B05	NR-2.515.8	Needle Roller	1
187	A-077187-01	Throttle Valve Handle Spring	1	207	G-160207-00	Rotor	1	F02	N-U5/8	Nut	1
B01	NR-415	Needle Roller	1	208	G-160208-00	Rotor Blade	5	F03	N-U5/8 (3)	Nut	1
B02	NR-413	Needle Roller	1	209	G-160209-00	Cylinder	1	G01	SR-S20	Snap Ring	1
C01	O-S22	"O" Ring	1	(B04)	SP-38	Spring Pin	2	G02	SR-S16	Snap Ring	1
<b>FG-8H-2M</b>				210	G-160210-00	Cylinder Upper Plate	1	H01	K-4410F	Key	1
CP No.	G-160001-01	Housing Cover CP		211	G-160211-00	Cylinder Lower Plate	1	H02	K-4410	Key	1
101	G-160101-01	Housing Cover	1	214	A-069214-00	Adjusting Washer (T = 0.2)	1	<b>OPTIONAL PART</b>			
140	G-160140-00	Cup Nut	1	214	A-069214-01	Adjusting Washer (T = 0.3)	1	<b>EXHAUST HOSE JOINT</b>			
257	A-100257-00	Washer	1	214	A-069214-02	Adjusting Washer (T = 0.5)	1	274	G-154274-00	Exhaust Hose Joint	1
C01	O-S44	"O" Ring	1	221	G-154221-00	Spindle Bearing Cover	1				
D01	CS-620	Cap Screw	2	222	G-044222-00	Felt Ring	1				
E01	SW-6	Spring Washer	2	238	A-109238-00	Bearing Cover (B)	1				
CP No.	A-100003-00	Throttle Valve Body CP		240	G-154240-00	Coupling	1				
108	A-100003-50	Throttle Valve Body	1	250	G-154250-00	Exhaust Cover	1				
(129)	A-078129-00	Throttle Valve Rod Bushing	1	(D03)	CS-510B	Cap Screw	2				
117	A-078117-01	Throttle Valve Spring	1	(E02)	SW-5	Spring Washer	2				
120	A-078120-03	Throttle Valve Cover (PT)	1	301	G-154301-00	Wheel Spindle	1				
120	A-078120-04	Throttle Valve Cover (NPT)	1	303	G-160303-03	Wheel Flange (A)	1				
121	A-078121-00	Throttle Valve Lever	1	304	G-160304-03	Wheel Flange (B)	1				
183	A-078183-01	Lock Key	1	308	G-160308-00	Spacer	1				
184	A-078184-00	Lock Spring	1	332	G-098332-00	Lock Nut	1				
B01	GP-520GCH	Grooved Pin	1								
C02	O-P26	"O" Ring	1								
D02	SS-48	Set Screw	1								
CP No.	A-078008-00	Throttle Valve Rod CP									
110	A-078110-01	Throttle Valve	1								
111	A-078111-01	Throttle Valve Washer	1								
113	A-078113-01	Throttle Valve Rod	1								
195	W-080195-00	Sub Throttle Valve	1								

□ CP No. denotes the assembled parts comprising of more than one part.  
 □ # 209, 250 and 335 are supplied together with parts shown.  
 □ Specify parts number and quantity in ordering.