

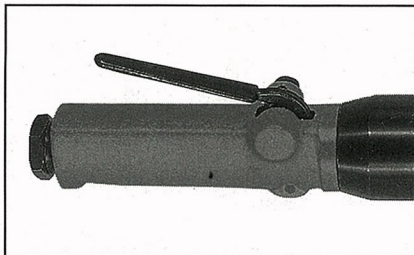
# Fuji USER MANUAL

## STRAIGHT GRINDERS

MODELS : FG-6H-1, -1M



FG-6H-1




FG-6H-1M

### SPECIFICATIONS

Model	Max. Dia. (Grinding Wheel)		Rotational Frequency	Spindle Thread Size	Overall Length		Mass		Max. Air Consumption		Air Inlet Thread Size	Air Hose Size	
	mm	in			mm	in	kg	lb	m <sup>3</sup> /min	ft <sup>3</sup> /min		mm	in
FG-6H-1	150×25×15.8	6×1×5/8	6,300	5/8-11UNC	434	17 3/32	3.5	7.7	1.20	42.4	Rc or NPT 3/8	12.7	1/2
FG-6H-1M	150×25×15.8	6×1×5/8	6,300	5/8-11UNC	531	20 7/8	3.5	7.7	1.20	42.4	Rc or NPT 3/8	12.7	1/2

The performance figures are at 0.63MPa (6.3bar).

 Refer to "The Instructions and Warning for Safety Use" enclosed in each tool box.

Fuji Industrial Technique Co.,Ltd.

2-1-14, Kamiji, Higashinari-ku, Osaka, 537-0003 Japan

Tel : 81-6-6972-2335

Fax : 81-6-6972-2380

ASSEMBLY TOOLS

ABRASIVE TOOLS

DRILLS / TAPPERS

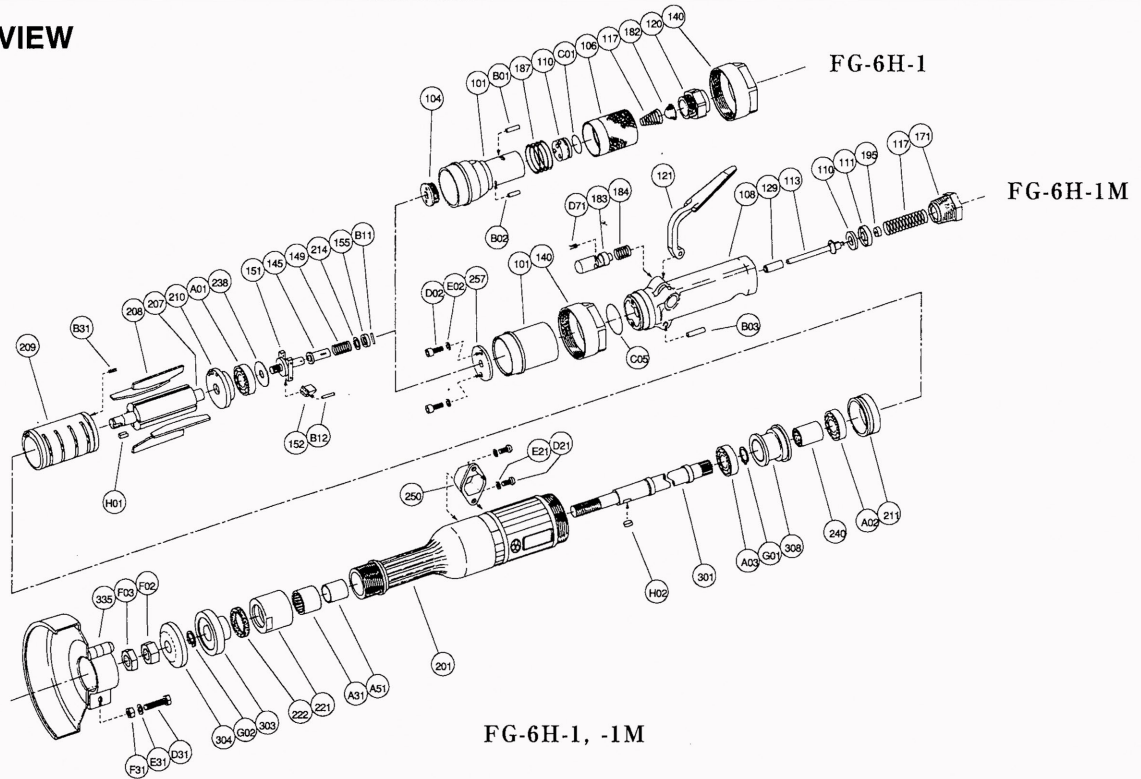
PERCUSSIVE TOOLS

AIR MOTORS

OTHER PRODUCTS

# MODELS : FG-6H-1, -1M

## EXPLODED VIEW



## PARTS LIST

Index No.	Parts No.	Parts Name	Qty	Index No.	Parts No.	Parts Name	Qty
<b>FG-6H-1</b>				140	G-153140-00	Cup Nut (for FG-6H-1)	1
	<b>G-153001-00</b>	<b>Housing Cover Ass'y &lt;Rc&gt;</b>		145	A-077145-00	Governor Valve	1
	<b>G-153001-02</b>	<b>Housing Cover Ass'y &lt;NPT&gt;</b>		149	A-084149-00	Governor Valve Spring	1
101	G-153101-00	Housing Cover	1	155	A-069155-00	Governor Valve Spring Holder	1
104	A-077104-01	Bushing	1	201	G-153201-00	Housing	1
106	A-077106-03	Throttle Valve Handle	1	207	A-109207-00	Rotor	1
110	A-077110-00	Throttle Valve	1	208	A-109208-00	Rotor Blade	4
117	A-077117-00	Throttle Valve Spring	1	209	A-077209-00	Cylinder	1
120	A-077120-00	Throttle Valve Cover <Rc>	1	(B31)	SP-38	Spring Pin	1
	A-077120-01	Throttle Valve Cover <NPT>	1	210	A-109210-00	Cylinder Upper Plate	1
182	W-057182-00	Strainer	1	211	A-109211-00	Cylinder Lower Plate	1
187	A-077187-01	Throttle Valve Handle Spring	1	214	A-069214-00	Adjusting Washer (T=0.2)	(1)
B01	NR-415	Needle Roller	1		A-069214-01	Adjusting Washer (T=0.3)	(1)
B02	NR-412.8	Needle Roller	1		A-069214-02	Adjusting Washer (T=0.5)	(1)
C01	O-S22	"O" Ring	1	221	G-044221-00	Spindle Bearing Cover	1
<b>FG-6H-1M</b>				222	G-044222-00	Felt Ring	1
	<b>G-153001-01</b>	<b>Housing Cover Ass'y &lt;Rc&gt;</b>		238	A-109238-00	Bearing Cover <B>	1
	<b>G-153001-03</b>	<b>Housing Cover Ass'y &lt;NPT&gt;</b>		240	G-152240-00	Coupling	1
101	G-153101-01	Housing Cover	1	250	G-152250-00	Exhaust Cover	1
140	G-153140-00	Cup Nut	1	301	G-153301-00	Wheel Spindle	1
257	A-109257-00	Washer	1	303	G-153303-01	Wheel Flange <A>	1
C05	O-S34	"O" Ring	1	304	G-153304-03	Wheel Flange <B>	1
D02	CS-518	Cap Screw	2	308	G-152308-00	Spacer	1
E02	SW-5	Spring Washer	2	335	G-045335-00	Wheel Guard	1
	<b>A-096003-00</b>	<b>Throttle Valve Body Ass'y &lt;Rc&gt;</b>		(D31)	HS-625	Hexagon Bolt	1
	<b>A-096003-03</b>	<b>Throttle Valve Body Ass'y &lt;NPT&gt;</b>		(E31)	SW-6	Spring Washer	1
108	A-096108-00	Throttle Valve Body	1	(F31)	N-6	Nut	1
(129)	A-078129-00	Throttle Valve Rod Bushing	1	A01	BB-6002MN	Ball Bearing	1
117	A-078117-01	Throttle Valve Spring	1	A02	BB-6301	Ball Bearing	1
121	A-078121-00	Throttle Valve Lever	1	A03	BB-6202	Ball Bearing	1
171	IB-6N30S0	Inlet Bushing <Rc>	1	A31	NB-HK2020	Needle Bearing	1
	IB-6N3NS0	Inlet Bushing <NPT>	1	A51	IR-172020.5	Inner Race	1
183	A-078183-01	Lock Key	1	B11	NR-2.515.8	Needle Roller	1
184	A-078184-00	Lock Spring	1	D21	CS-510B	Cap Screw	2
B03	GP-520GCH	Grooved Pin	1	E21	SW-5	Spring Washer	2
D71	SS-48	Set Screw	1	E02	N-U 5/8	Nut	1
	<b>A-078008-00</b>	<b>Throttle Valve Rod Ass'y</b>		F03	N-U 5/8 (3)	Nut	1
110	A-078110-01	Throttle Valve	1	G01	SR-S15	Snap Ring	1
111	A-078111-01	Throttle Valve Washer	1	G02	SR-S16	Snap Ring	1
113	A-078113-01	Throttle Valve Rod	1	H01	K-4410F	Key	1
195	W-080195-00	Sub Throttle Valve	1	H02	K-4410	Key	1
<b>FG-6H-1, -1M</b>							
	<b>A-193010-02</b>	<b>Governor Weight Ass'y</b>					
151	A-193151-00	Governor Cage	1				
152	G-154152-00	Governor Weight	2				
B12	GP-2.524GCH	Grooved Pin	2				

□ #108, 209, and 335 are supplied together with parts shown in ( ).  
 □ Specify parts number and quantity when ordering.

■ Standard Accessory

AC No.	Description	Qty
F-125	Open-End Wrench	1

□ The related parts are shown in a thick frame.  
 □ The quantity of #214 is different according to the adjustment.