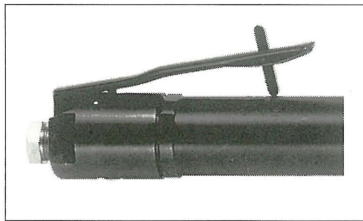


Fuji USER MANUAL

EXTENDED GRINDERS

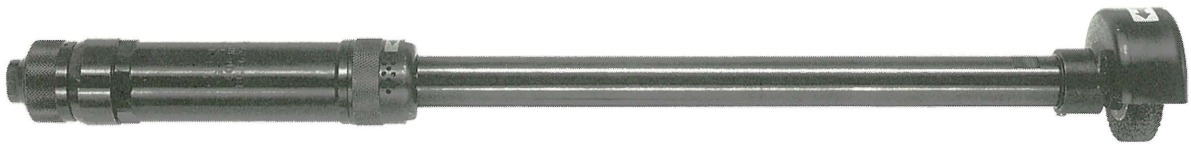
MODELS: FG-50L-1, -1BF & FG-50Y-1, -1BF



FG-50L-1BF
FG-50Y-1BF



FG-50L-1



FG-50Y-1

SPECIFICATIONS

Model	Capacity (Grinding Wheel)		Rotational Frequency min^{-1}	Spindle Thread Size	Overall Length		Mass		Max. Air Consumption		Air Inlet Thread Size	Air Hose Size	
	mm	in			mm	in	kg	lb	m^3/min	ft^3/min		mm	in
FG-50L-1	50×13×9.53	2×1/2×3/8	18,000	W3/8-16	307	12 3/32	1.4	3.0	0.43	15.2	Rc 1/4	9.5	3/8
FG-50L-1BF	50×13×9.53	2×1/2×3/8	18,000	W3/8-16	316	12 7/16	1.4	3.0	0.43	15.2	Rc or NPT 1/4	9.5	3/8
FG-50Y-1	50×13×9.53	2×1/2×3/8	18,000	W3/8-16	523	20 19/32	2.0	4.4	0.43	15.2	Rc 1/4	9.5	3/8
FG-50Y-1BF	50×13×9.53	2×1/2×3/8	18,000	W3/8-16	532	20 15/16	2.0	4.4	0.43	15.2	Rc or NPT 1/4	9.5	3/8

The performance figures are at 0.63 MPa(6.3bar).



Refer to "The Instructions and Warning for Safety Use" enclosed in each tool box.

Fuji Industrial Technique Co., Ltd.

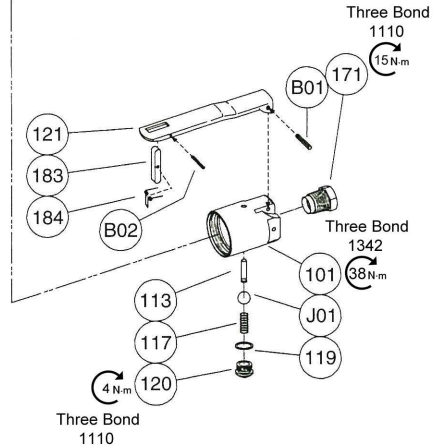
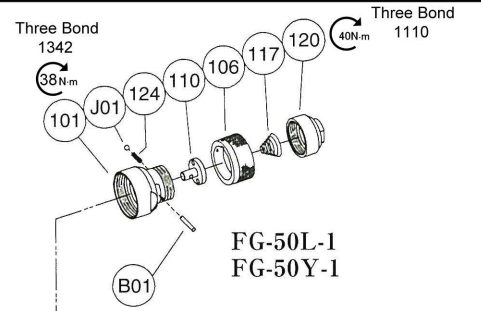
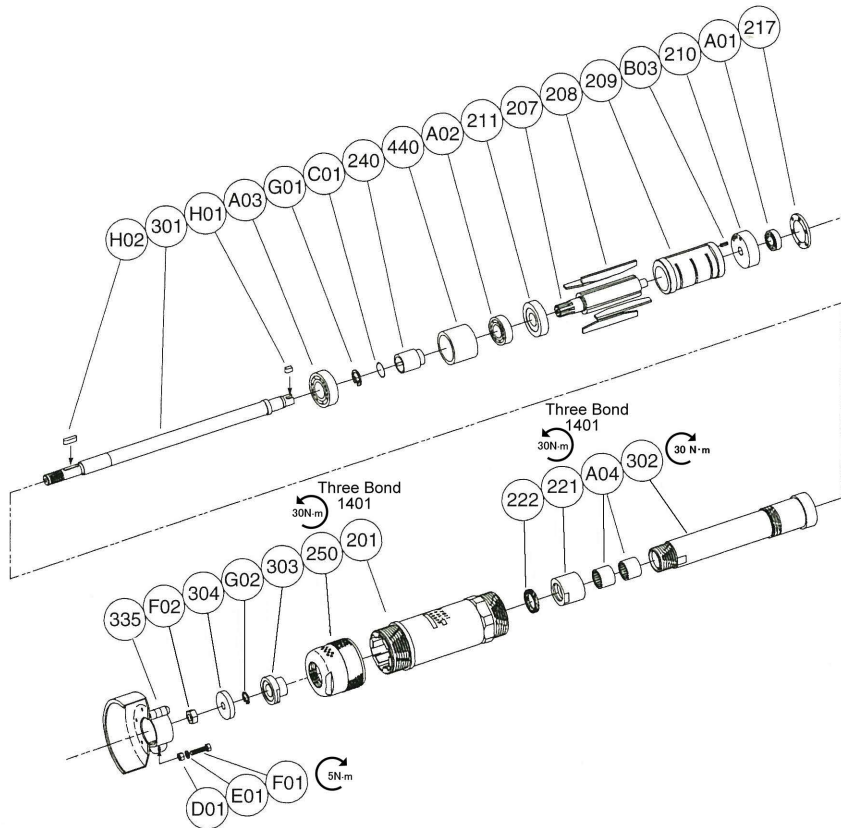
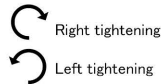
2-1-14, Kamiji, Higashinari-ku, Osaka, 537-0003 Japan

Tel : 81-6-6972-2335

Fax : 81-6-6972-2380

MODELS : FG-50L-1,-1BF & FG-50Y-1,-1BF

EXPLODED VIEW



PARTS LIST

Index No.	Parts No.	Parts Name	Qty	Index No.	Parts No.	Parts Name	Qty	Index No.	Parts No.	Parts Name	Qty									
FG-50L-1 FG-50Y-1				FG-50L-1, -1BF				440 G-163440-00 Ring 1 A01 BB-626 Ball Bearing 1 A02 BB-609 Ball Bearing 1 A03 BB-6001 Ball Bearing 1 A04 NB-HK1210 Needle Bearing 2 C01 O-P10A "O" Ring 1 F02 N-W3/8 Nut 1 G01 SR-S12 Snap Ring 1 G02 SR-SA10 Snap Ring 1 H01 K-338F Key 1 H02 K-338 Key 1 It is common with FG-50L-1, -1BF excluding the parts below. FG-50Y-1, -1BF 201 G-164201-00 Housing 1 301 G-164301-00 Wheel Spindle 1 302 G-164302-00 Wheel Spindle Case 1												
—	G-158001-00	Housing Cover Ass'y		201	G-163201-00	Housing	1													
101	G-158101-00	Housing Cover	1	207	G-163207-00	Rotor	1													
106	G-040106-A	Throttle Valve Handle	1	208	G-106208-00	Rotor Blade	4													
110	G-011110-00	Throttle Valve	1	209	G-106209-00	Cylinder	1													
117	G-042117-00	Throttle Valve Spring	1	(B03)	SP-26	Spring Pin	1													
120	G-011120-00	Throttle Valve Cover (Rc)	1	210	G-106210-00	Cylinder Upper Plate	1													
124	G-005124-00	Knock Spring	1	211	G-163211-00	Cylinder Lower Plate	1													
B01	NR-318.8	Needle Roller	1	217	G-106217-00	Bearing Cover	1													
J01	B-3	Ball	1	221	G-042221-00	Spindle Bearing Cover	1													
FG-50L-1BF FG-50Y-1BF				222	G-042222-00	Felt Ring	1													
—	G-158001-06	Housing Cover Ass'y<Rc>		240	G-163240-00	Coupling	1													
—	G-158001-07	Housing Cover Ass'y<NPT>		250	G-163250-00	Exhaust Cover	1													
101	G-158101-03	Housing Cover	1	301	G-163301-00	Wheel Spindle	1													
113	G-144113-00	Throttle Valve Rod	1	302	G-163302-00	Wheel Spindle Case	1													
117	D-021117-00	Throttle Valve Spring	1	303	G-163303-01	Wheel Flange <A>	1													
119	D-021119-00	T. V. Cover Packing	1	304	G-163304-01	Wheel Flange 	1													
120	D-021120-00	Throttle Valve Cover	1	335	G-163335-00	Wheel Guard	1													
171	IB-3020S0	Inlet Bushing (Rc)	1	(D01)	HS-625	Hexagon Bolt	1													
	IB-302NS0	Inlet Bushing (NPT)	1	(E01)	SW-6	Spring Washer	1													
B01	SP-320	Spring Pin	1	(F01)	N-6	Nut	1													
J01	B-5/16U	Urethane Ball	1	<input type="checkbox"/> The related parts are shown in a thick frame. <input type="checkbox"/> #209 and 335 are supplied together with parts shown in (). <input type="checkbox"/> Specify parts number and quantity when ordering.																
—	A-122019-01	"F" Lock Lever Ass'y		Standard Accessories																
121	A-122121-00	Throttle Valve Lever	1	<table border="1" style="width: 100%;"> <thead> <tr> <th>AC No.</th> <th>Description</th> <th>Qty</th> </tr> </thead> <tbody> <tr> <td>F-117</td> <td>21mm Open-end Wrench</td> <td>1</td> </tr> <tr> <td>G-013308-00</td> <td>Spacer</td> <td>1</td> </tr> </tbody> </table>								AC No.	Description	Qty	F-117	21mm Open-end Wrench	1	G-013308-00	Spacer	1
AC No.	Description	Qty																		
F-117	21mm Open-end Wrench	1																		
G-013308-00	Spacer	1																		
183	G-144183-02	Lock Key	1																	
184	G-144184-00	Lock Spring	1																	
B02	SP-218	Spring Pin	1																	