

Fuji USER MANUAL

STRAIGHT GRINDERS

MODELS : FG-4H-1, -1F, -2, -2F



FG-4H-1, -2



FG-4H-1F, -2F

SPECIFICATIONS

Model	Max. Dia (Grinding Wheel)		Rotational Frequency	Spindle Thread	Overall Length		Mass		Max. Air Consumption		Air Inlet Thread Size	Air Hose Size	
	mm	in			min ⁻¹	in	mm	in	kg	lb		m ³ /min	ft ³ /min
FG-4H-1	100×19×9.53	4×3/4×3/8	9,500	W3/8-16	385	15 5/32	2.1	4.6	0.8	28.2	PT or NPT 3/8	12.7	1/2
FG-4H-1F	100×19×9.53	4×3/4×3/8	9,500	W3/8-16	408	16 1/16	2.3	5.1	0.8	28.2	PT or NPT 3/8	12.7	1/2
FG-4H-2	100×19×12.7	4×3/4×1/2	9,500	W1/2-12	391	15 25/64	2.1	4.6	0.8	28.2	PT or NPT 3/8	12.7	1/2
FG-4H-2F	100×19×12.7	4×3/4×1/2	9,500	W1/2-12	414	16 19/64	2.3	5.1	0.8	28.2	PT or NPT 3/8	12.7	1/2

The performance figures are at 0.63MPa (6.3bar).

⚠ Refer to "The Instructions and Warning for Safety Use" enclosed in each tool box.

Fuji Industrial Technique Co., Ltd.

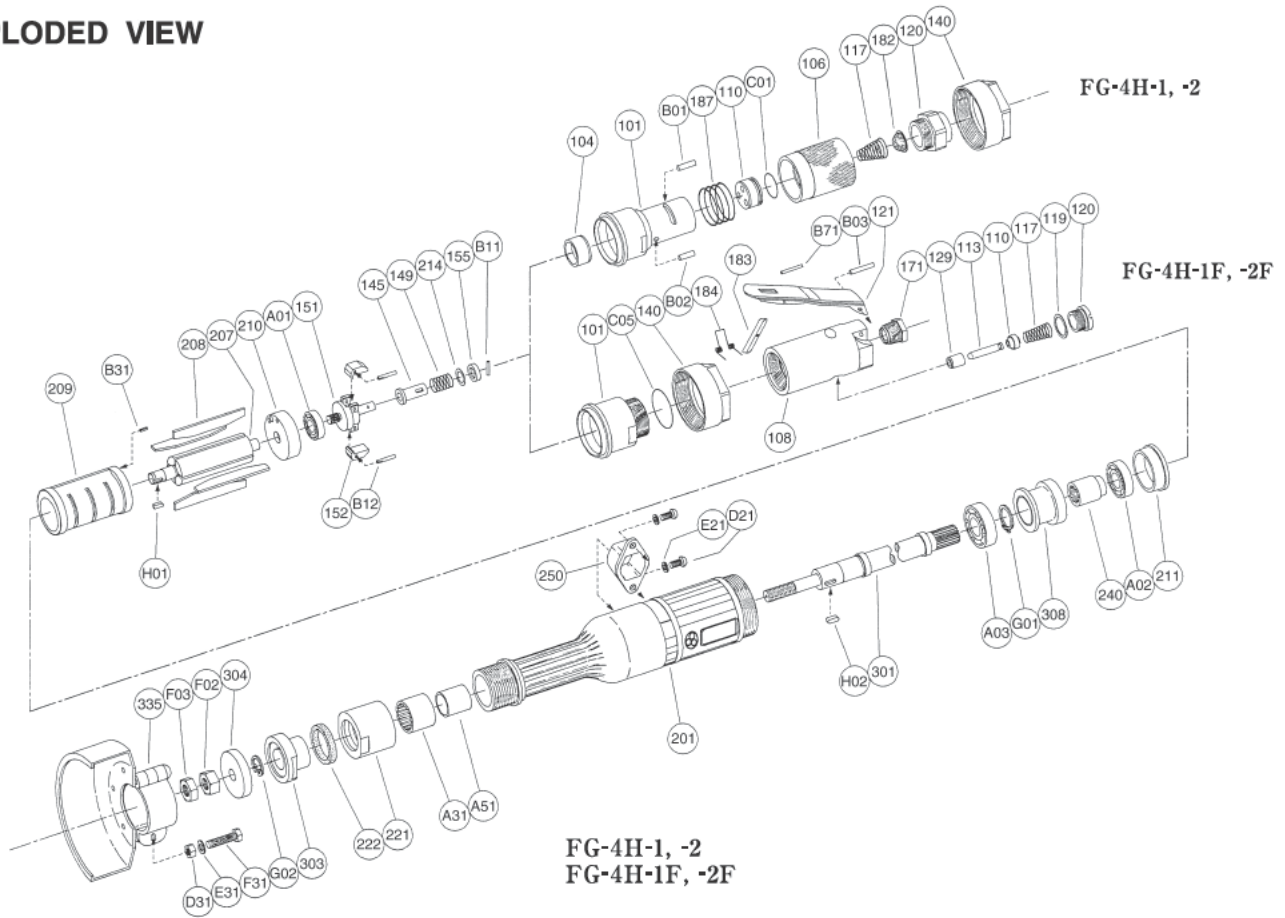
2-1-14, Kamiji, Higashinari-ku, Osaka, 537-0003 Japan

Tel : 81-6-6972-2335

Fax : 81-6-6972-2380

MODELS : FG-4H-1, -1F, -2, -2F

EXPLODED VIEW



PARTS LIST

Index No.	Parts No.	Parts Name	Qty	Index No.	Parts No.	Parts Name	Qty	Index No.	Parts No.	Parts Name	Qty
FG-4H-1, -2											
—	A-093001-00	Housing Cover Ass'y (PT)		B03	IB-403NS0	Inlet Bushing (NPT)	1	303	G-170303-06	Wheel Flange (A)	1
—	A-093001-01	Housing Cover Ass'y (NPT)		—	SP-320	Spring Pin	1	304	G-170304-04	Wheel Flange (B)	1
101	G-170001-50	Housing Cover	1	—	G-144019-01	Lock Lever Ass'y		308	G-170308-00	Spacer	1
(104)	G-103104-00	Bushing	1	121	G-144121-02	Throttle Valve Lever	1	335	G-043335-00	Wheel Guard	1
106	A-086106-00	Throttle Valve Handle	1	183	G-144183-02	Lock Key	1	(D31)	HS-625	Hexagon Bolt	1
110	A-086110-00	Throttle Valve	1	184	G-144184-00	Lock Spring	1	(E31)	SW-6	Spring Washer	1
117	A-086117-00	Throttle Valve Spring	1	B71	SP-218	Spring Pin	1	(F31)	N-6	Nut	1
120	A-086120-00	Throttle Valve Cover (PT)	1	FG-4H-1, -1F, -2, -2F							
—	A-086120-01	Throttle Valve Cover (NPT)	1	—	A-107010-01	Governor Weight Ass'y		A01	BB-609MN	Ball Bearing	1
182	A-086182-00	Strainer	1	151	A-107151-01	Governor Cage	1	A02	BB-6200	Ball Bearing	1
187	A-086187-00	Throttle Valve Handle Spring	1	152	G-087152-00	Governor Weight	2	A03	BB-6202	Ball Bearing	1
B01	NR-415	Needle Roller	1	B12	GP-2.516GCH	Grooved Pin	2	A31	NB-HK2020	Needle Bearing	1
B02	NR-412.8	Needle Roller	1	140	A-093140-00	Cup Nut (for FG-4H-1, -2)	1	A51	IR-172020.5	Inner Race	1
C01	O-S20	"O" Ring	1	145	A-065145-00	Governor Valve	1	B11	NR-211.8	Needle Roller	1
FG-4H-1F, -2F											
—	A-110001-01	Housing Cover Ass'y (PT)		149	G-170149-00	Governor Valve Spring	1	D21	CS-510B	Cap Screw	2
—	A-110001-03	Housing Cover Ass'y (NPT)		155	A-065155-00	Governor Valve Spring Holder	1	E21	SW-5	Spring Washer	2
101	A-110101-00	Housing Cover	1	201	G-170201-00	Housing	1	F02	N-W3/8	Nut	1
140	A-093140-00	Cup Nut	1	207	A-110207-00	Rotor	1	F03	N-W3/8(3)	Nut	1
C05	O-S26	"O" Ring	1	208	A-093208-00	Rotor Blade	4	G01	SR-S15	Snap Ring	1
—	A-107003-00	Throttle Valve Body Ass'y (PT)		209	A-073209-00	Cylinder	1	G02	SR-E9	Snap Ring	1
—	A-107003-01	Throttle Valve Body Ass'y (NPT)		(B31)	SP-26	Spring Pin	1	H01	K-338F	Key	1
108	A-107003-50	Throttle Valve Body	1	210	A-110210-00	Cylinder Upper Plate	1	H02	K-4410	Key	1
(129)	H-014129-00	Throttle Valve Rod Bushing	1	211	A-110211-00	Cylinder Lower Plate	1	It is common with FG-4H-1, -1F excluding the undermentioned parts.			
110	H-001110-02	Throttle Valve	1	214	A-065214-00	Adjusting Washer (T=0.2)	(1)	FG-4H-2, -2F			
113	G-028113-00	Throttle Valve Rod	1	—	A-065214-01	Adjusting Washer (T=0.3)	(1)	301	G-152301-00	Wheel Spindle	1
117	D-001117-00	Throttle Valve Spring	1	—	A-065214-02	Adjusting Washer (T=0.5)	(1)	304	G-170304-05	Wheel Flange (B)	1
119	G-028119-00	T.V. Cover Packing	1	221	G-044221-00	Spring Bearing Cover	1	F02	N-W1/2	Nut	1
120	G-028120-00	Throttle Valve Cover	1	222	G-044222-00	Felt Ring	1	F03	N-W1/2(3)	Nut	1
171	IB-4030S0	Inlet Bushing (PT)	1	240	G-170240-00	Coupling	1	G02	SR-E12	Snap Ring	1
				250	G-170250-00	Exhaust Cover	1				
				301	G-170301-04	Wheel Spindle	1				

- The related parts are shown in a thick frame.
- #101, 108, 209, and 335 are supplied together with parts shown in ().
- The quantity of #214 is different according to the adjustment.
- Specify parts number and quantity when ordering.

■ Standard Accessory

AC No.	Description	Qty
F-112	32mm Hex. Open-End Wrench	1