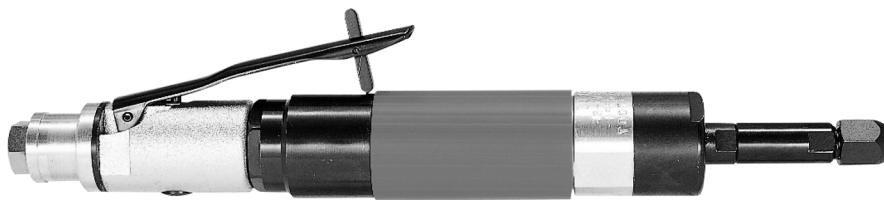


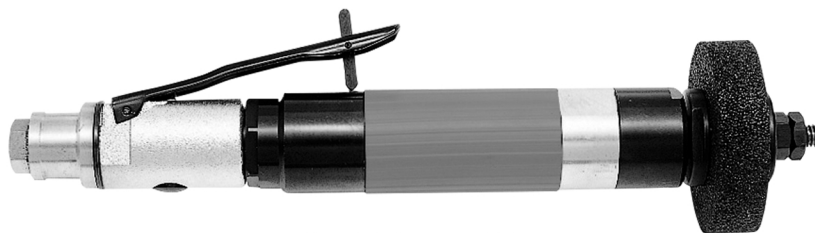
Fuji USER MANUAL

LOW SPEED GRINDERS

MODELS : FG-3VX-1F, -2F, -3F, -6F



FG-3VX-1F, -6F



FG-3VX-2F, -3F

SPECIFICATIONS

Model	Collet Capacity		Wheel Thread Size		Max. Free Speed rpm	Overall Length (about)		Weight (about)		Air Consumption at Max. Output (about)		Air Inlet Thread Size PT or NPT	Air Hose Size	
	mm	in	mm	in		mm	in	kg	lb	Nm ³ /min	ft ³ /min		mm	in
FG-3VX-1F	6	1/4	—	—	7,600	331	13 1/32	1.4	3.1	0.45	15.9	1/4	9.5	3/8
FG-3VX-2F	—	—	—	3/8-16	9,500	316	12 7/16	1.4	3.1	0.47	16.6	1/4	9.5	3/8
FG-3VX-3F	—	—	—	3/8-16	7,600	316	12 7/16	1.4	3.1	0.45	15.9	1/4	9.5	3/8
FG-3VX-6F	6	1/4	—	—	12,000	331	13 1/32	1.4	3.1	0.47	16.6	1/4	9.5	3/8

The performance figures are at 6.3 bar.



Refer to "The Instructions and Warning for Safety Use" enclosed in each tool box.

Fuji Industrial Technique Co.,Ltd.

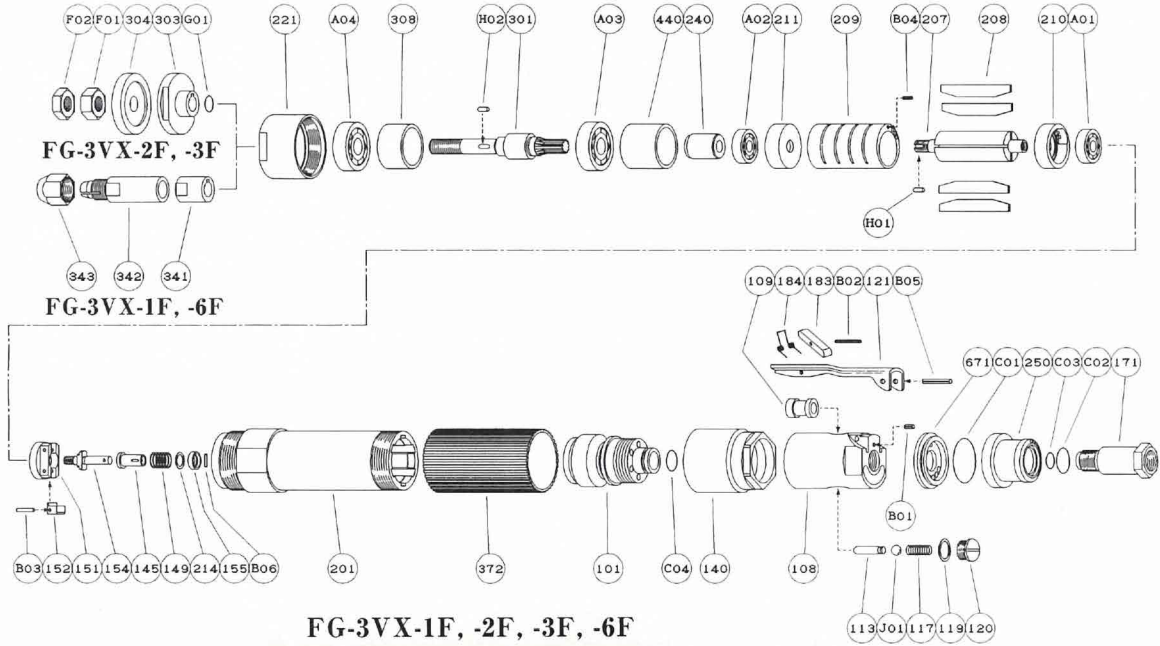
2-1-14, Kamiji, Higashinari-ku, Osaka, 537-0003 Japan

Tel : 81-6-6972-2335

Fax : 81-6-6972-2380

MODELS : FG-3VX-1F,-2F, -3F, -6F

EXPLODED VIEW



PARTS LIST

Index No.	Parts No.	Parts Name	Qt.
FG-3VX-1F, -2F, -3F, -6F			
CP No.	G-209003-00	Throttle Valve Body CP <PT>	
CP No.	G-209003-01	Throttle Valve Body CP <NPT>	
108	G-209003-50	Throttle Valve Body	1
(109)	G-144109-00	Throttle Valve Bushing	1
113	G-144113-00	Throttle Valve Rod	1
117	D-021117-00	Throttle Valve Spring	1
119	D-021119-00	T.V. Cover Packing	1
120	D-021120-00	Throttle Valve Cover	1
171	W-100171-00	Inlet Joint <PT>	1
171	W-100171-01	Inlet Joint <NPT>	1
250	G-209250-00	Exhaust Cover	1
671	G-209671-00	Exhaust Cover Joint	1
B01	SP-2.56	Spring Pin	1
C01	O-S28	"O" Ring	1
C02	O-S16	"O" Ring	1
C03	O-S10	"O" Ring	1
J01	B-5/16U	Ball	1
CP No.	A-122019-01	Lock Lever CP	
121	A-122121-00	Throttle Valve Lever	1
183	G-144183-02	Lock Key	1
184	G-144184-00	Lock Spring	1
B02	SP-218	Spring Pin	1
CP No.	G-197010-00	Governor Weight CP	
151	A-124151-00	Governor Cage	1
152	G-197152-00	Governor Weight	2
154	A-124154-00	Governor Shaft	1
B03	GP-212GCH	Grooved Pin	2
101	G-209101-00	Housing Cover	1
140	G-209140-00	Cup Nut	1
145	A-066145-00	Governor Valve	1
149	G-197149-00	Governor Valve Spring (FG-3VX-1F,-3F)	1
149	G-198149-00	Governor Valve Spring (FG-3VX-2F)	1
149	A-076149-00	Governor Valve Spring (FG-3VX-6F)	1
155	A-066155-00	Governor Valve Spring Holder	1
201	G-209201-00	Housing	1
207	A-124207-00	Rotor	1

- CP No. denotes the assembled parts comprising of more than 1 pc. of parts. The related parts are shown in the thick frame.
- #108 and 209 are supplied together with parts shown in ().
- Specify parts number and quantity in ordering.

Index No.	Parts No.	Parts Name	Qt.
208	A-124208-00	Rotor Blade	4
209	A-124209-00	Cylinder	1
(B04)	SP-26	Spring Pin	1
210	A-124210-00	Cylinder Upper Plate	1
211	A-124211-00	Cylinder Lower Plate	1
214	A-066214-00	Adjusting Washer <T=0.2>	1
214	A-066214-01	Adjusting Washer <T=0.3>	1
214	A-066214-02	Adjusting Washer <T=0.1>	1
214	A-066214-03	Adjusting Washer <T=0.5>	1
221	G-209221-00	Spindle Bearing Cover	1
240	G-197240-00	Coupling	1
301	G-197301-00	Wheel Spindle	1
308	G-197308-00	Spacer	1
341	G-161341-00	Chuck Collar	1
342	G-017342-00	Collet <6mm>	1
342	G-017342-01	Collet <1/4>	1
343	G-162343-00	Collet Nut	1
372	G-209372-00	Plastic Cover	1
440	G-163440-00	Ring	1
A01	BB-608MN	Ball Bearing	1
A02	BB-608	Ball Bearing	1
A03	BB-6001	Ball Bearing	1
A04	BB-6001	Ball Bearing	1
B05	SP-320	Spring Pin	1
B06	NR-1.58.8	Needle Roller	1
C04	O-S12	"O" Ring	1
H01	K-2.52.57F	Key	1
H02	K-338	Key	1
FG-3VX-2F, -3F			
301	G-198301-00	Wheel Spindle	1
303	G-198303-00	Wheel Flange <A>	1
304	G-170304-00	Wheel Flange 	1
F01	N-W3/8	Nut	1
F02	N-W3/8(3)	Nut	1
G01	SR-SA10	Snap Ring	1

Standard Accessories :

- EH-50A Exhaust Hose 1.
- IH-8B Inlet Hose 1. (PT)
- IH-8BN Inlet Hose 1. (NPT)
- FG-3VX-1F,-6F.....F-105 14mm Open-End Wrench 1.
- F-106 17mm Open-End Wrench 1.
- FG-3VX-2F,-3F.....F-112 32mm Open-End Wrench 1.