

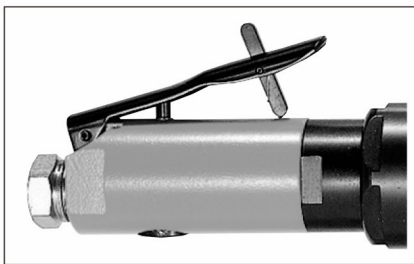
Fuji USER MANUAL

STRAIGHT GRINDERS

MODELS : FG-3H-5, -5F



FG-3H-5



FG-3H-5F

SPECIFICATIONS

Model	Collet Size		Rotational Frequency min ⁻¹	Overall Length		Mass		Max. Air Consumption		Air Inlet Thread Size	Air Hose Size	
	mm	in		mm	in	kg	lb	m ³ /min	ft ³ /min		mm	in
FG-3H-5	6	1/4	14,600	342	13 1/2	1.26	2.77	0.55	19.4	Rc or NPT 3/8	9.5	3/8
FG-3H-5F	6	1/4	14,600	367	14 1/2	1.46	3.21	0.55	19.4	Rc or NPT 3/8	9.5	3/8

The performance figures are at 0.63 MPa(6.3bar).



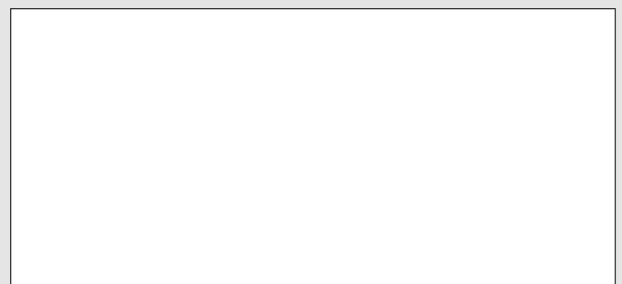
Refer to "The Instructions and Warning for Safety Use" enclosed in each tool box.

Fuji Industrial Technique Co.,Ltd.

2-1-14, Kamiji, Higashinari-ku, Osaka, 537-0003 Japan

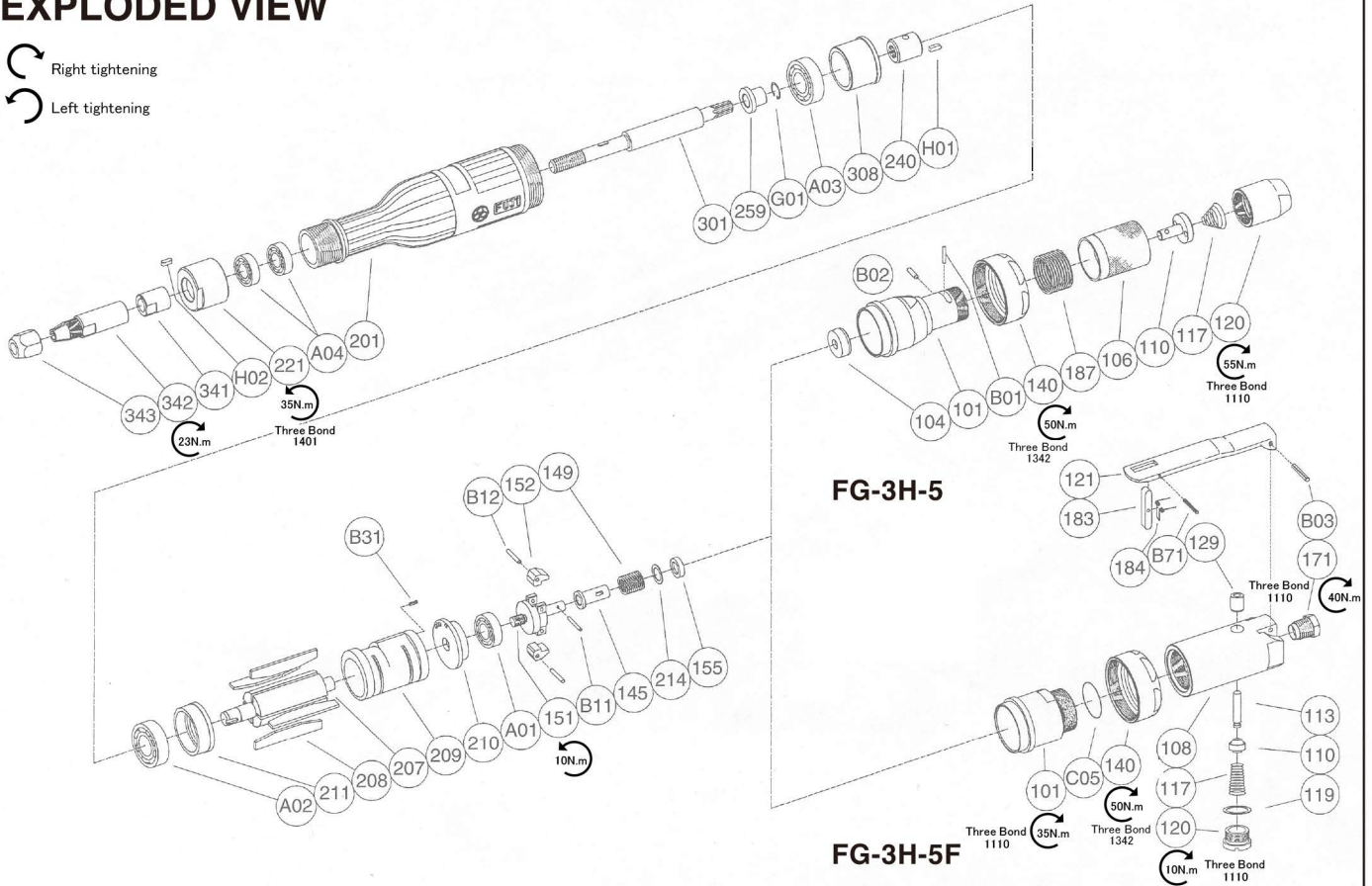
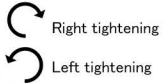
Tel : 81-6-6972-2335

Fax : 81-6-6972-2380



MODELS : FG-3H-5, -5F

EXPLODED VIEW



PARTS LIST

Index No.	Parts No.	Parts Name	Qty	Index No.	Parts No.	Parts Name	Qty	Index No.	Parts No.	Parts Name	Qty
FG-3H-5											
LOCKING HANDLE ROLL TYPE											
-	G-101001-00	Housing Cover Ass'y (Rc)		117	D-001117-00	Throttle Valve Spring	1	210	A-107210-00	Cylinder Upper Plate	1
-	G-101001-01	Housing Cover Ass'y (NPT)		119	G-028119-00	T.V. Cover Packing	1	211	A-107211-00	Cylinder Lower Plate	1
101	G-101001-50	Housing Cover	1	120	G-028120-00	Throttle Valve Cover	1	214	A-065214-00	Adjusting Washer (T=0.2)	1
(104)	G-101104-00	Bushing	1	171	IB-403S0	Inlet Bushing (Rc)	1		A-065214-01	Adjusting Washer (T=0.3)	1
106	G-042106-04	Throttle Valve Handle	1		IB-403NS0	Inlet Bushing (NPT)	1		A-065214-02	Adjusting Washer (T=0.5)	1
110	G-042110-00	Throttle Valve	1	B03	SP-320	Spring Pin	1	221	G-161221-00	Spindle Bearing Cover	1
117	G-042117-00	Throttle Valve Spring	1	-	G-144019-01	Lock Lever Ass'y		240	G-161240-00	Coupling	1
120	G-042120-00	Throttle Valve Cover (Rc)	1	121	G-144121-02	Throttle Valve Lever	1	259	G-161259-00	Inner Race	1
	G-042120-F	Throttle Valve Cover (NPT)	1	183	G-144183-02	Lock Key	1	301	G-161301-01	Wheel Spindle	1
187	G-042187-00	Throttle Valve Handle Spring	1	184	G-144184-00	Lock Spring	1	308	G-161308-00	Spacer	1
B01	NR-316.8	Needle Roller	1	B71	SP-218	Spring Pin	1	341	G-161341-00	Chuck Collar	1
B02	NR-39.8	Needle Roller	1	FG-3H-5, -5F							
FG-3H-5F											
LOCKING HANDLE LEVER TYPE											
-	A-107001-02	Housing Cover Ass'y (Rc)		-	A-107010-00	Governor Weight Ass'y		343	G-162343-00	Collet Nut	1
-	A-107001-03	Housing Cover Ass'y (NPT)		151	A-107151-01	Governor Cage	1		G-041342-00	Collet (1/4")	1
101	G-161101-00	Housing Cover	1	152	A-010152-00	Governor Weight	2	A01	BB-609MN	Ball Bearing	1
140	G-101140-00	Cup Nut	1	B12	GP-2.516GCH	Grooved Pin	2	A02	BB-6200	Ball Bearing	1
C05	O-S26	"O" Ring	1	140	G-101140-00	Cup Nut (for FG-3H-5)	1	A03	BB-6201	Ball Bearing	1
-	A-107003-02	Throttle Valve Body Ass'y (Rc)		145	A-065145-00	Governor Valve	1	A04	BB-EE01	Ball Bearing	1
-	A-107003-03	Throttle Valve Body Ass'y (NPT)		149	G-170149-00	Governor Valve Spring	1	B11	NR-211.8	Needle Roller	1
108	A-107003-52	Throttle Valve Body	1	155	A-065155-00	Governor Valve Spring Holder	1	G01	SR-S9	Snap Ring	1
(129)	H-014129-00	Throttle Valve Rod Bushing	1	201	G-161201-00	Housing	1	H01	K-338F	Key	1
110	H-001110-02	Throttle Valve	1	207	A-107207-00	Rotor	1	H02	K-338	Key	1
113	G-028113-00	Throttle Valve Rod	1	208	G-103208-00	Rotor Blade	4				
				209	G-161209-00	Cylinder	1				
				(B31)	SP-26	Spring Pin	1				

■ Standard Accessories

AC No.	Description	Qty
F-105	14mm Open-End Wrench	1
F-106	17mm Open-End Wrench	1

- The related parts are shown in thick frame.
- #101, 108 and 209 are supplied together with parts shown in ().
- Specify parts number and quantity when ordering.