

Fuji USER MANUAL

ASSEMBLY TOOLS

ABRASIVE TOOLS

DRILLS / TAPPERS

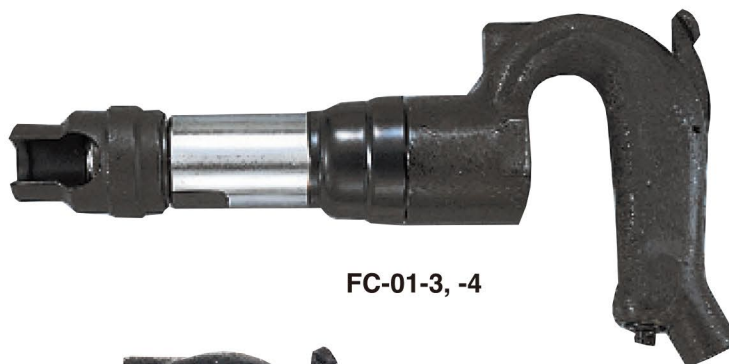
PERCUSSIVE TOOLS

AIR MOTORS

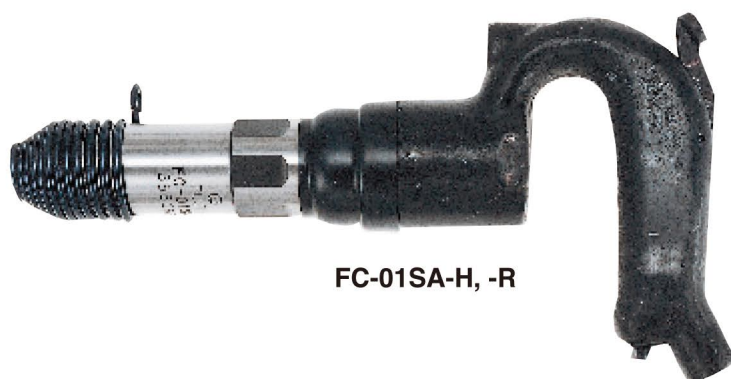
OTHER PRODUCTS

— CHIPPING & CALKING HAMMERS —

MODELS : FC-01-3, -4 & FC-01SA-H, -R



FC-01-3, -4



FC-01SA-H, -R

SPECIFICATIONS

Model	Chisel Shank	Blows Hz	Piston Diameter		Stroke		Chisel Bush Size mm	Overall Length		Mass		Air Consumption (At Load)		Air Inlet Thread Size	Air Hose Size	
			mm	in	mm	in		mm	mm	in	kg	lb	m ³ /min		ft ³ /min	mm
FC-01-3	Hex	50	20	25/32	44.5	1 3/4	12x45	285	11 7/32	2.60	5.7	0.42	14.8	RcorNPT 1/4	9.5	3/8
FC-01-4	Round	50	20	25/32	44.5	1 3/4	14x45	285	11 7/32	2.60	5.7	0.42	14.8	RcorNPT 1/4	9.5	3/8
FC-01SA-H	Hex	50	20	25/32	44.5	1 3/4	12x45	282	11 1/10	2.45	5.4	0.42	14.8	RcorNPT 1/4	9.5	3/8
FC-01SA-R	Round	50	20	25/32	44.5	1 3/4	14x45	282	11 1/10	2.45	5.4	0.42	14.8	Rc 1/4	9.5	3/8

The performance figures are at 0.63MPa (6.3bar).



Refer to "The Instructions and Warning for Safety Use" enclosed in each tool box.

Fuji Industrial Technique Co.,Ltd.

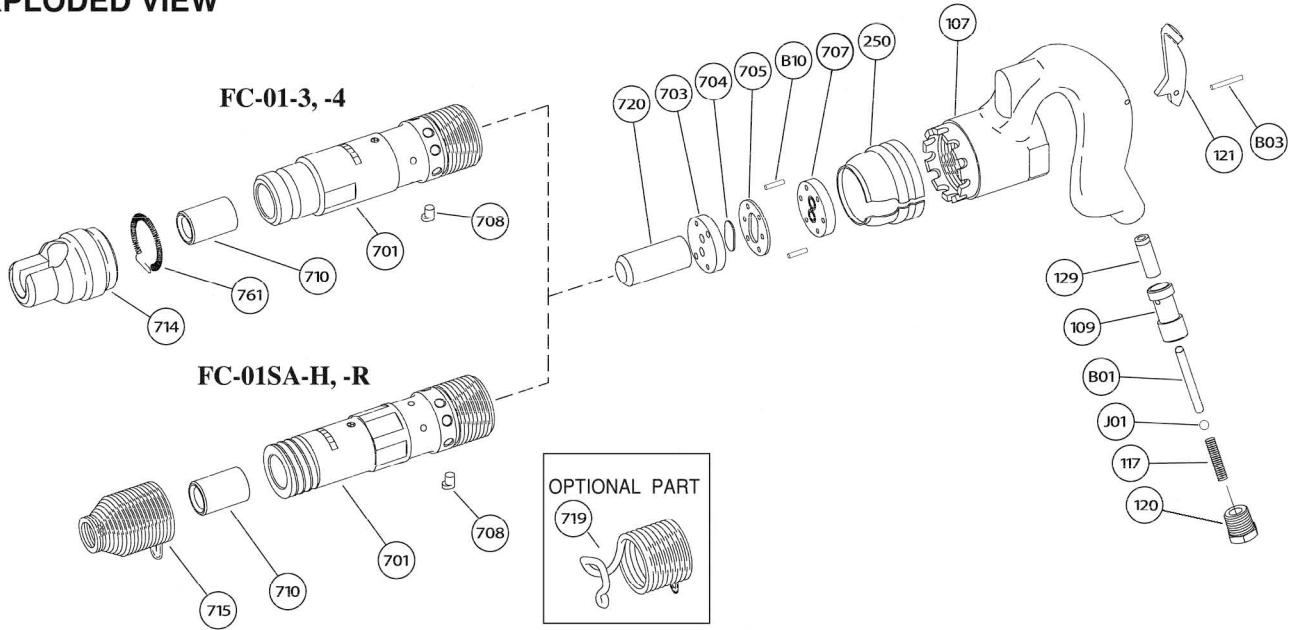
2-1-14, Kamiji, Higashinari-ku, Osaka, 537-0003 Japan

Tel : 81-6-6972-2335

Fax : 81-6-6972-2380

MODELS : FC-01-3, -4 & FC-01SA-H, -R

EXPLODED VIEW

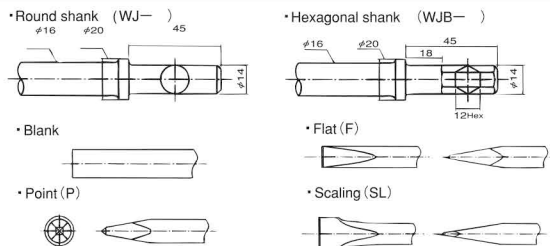


PARTS LIST

Index No.	Parts No.	Parts Name	Qty
FC-01-3			
-	H-061007-01	Cylinder Ass'y	
701	H-061701-00	Cylinder	1
710	H-004710-H	Chisel Bushing	1
FC-01-4			
-	H-061007-02	Cylinder Ass'y	
701	H-061701-00	Cylinder	1
710	H-004710-00	Chisel Bushing	1
FC-01-3, -4			
-	H-004002-01	Handle Ass'y	
107	H-004107-01	Handle	1
(109)	H-004109-00	Throttle Valve Bushing	1
(129)	H-004129-00	Throttle Valve Rod Bushing	1
117	H-004117-A	Throttle Valve Spring	1
120	H-043120-00	Throttle Valve Cover	1
121	H-004121-01	Throttle Valve Lever	1
B01	NR-547FR	Needle Roller	1
B03	NR-315.8	Needle Roller	1
J01	B-5/16U	Urethane Ball	1
250	H-004250-00	Exhaust Cover	1
703	H-004703-00	Valve Sheet	1
704	H-004704-00	Valve	1
705	H-004705-00	Valve Case	1
707	H-004707-00	Valve Cover	1
708	R-003708-A	Locking Clutch	1
714	H-059714-00	Chisel Holder	1
720	H-004720-00	Piston	1
761	H-059761-00	Retainer Spring	1
B10	P-316	Pin	2

Index No.	Parts No.	Parts Name	Qty
FC-01SA-H			
-	H-043007-01	Cylinder Ass'y	
701	H-043701-00	Cylinder	1
710	H-004710-H	Chisel Bushing	1
FC-01SA-R			
-	H-043007-02	Cylinder Ass'y	
701	H-043701-04	Cylinder	1
710	H-004710-00	Chisel Bushing	1
FC-01SA-H, -R			
-	H-004002-01	Handle Ass'y	
107	H-004107-01	Handle	1
(109)	H-004109-00	Throttle Valve Bushing	1
(129)	H-004129-00	Throttle Valve Rod Bushing	1
117	H-004117-A	Throttle Valve Spring	1
120	H-043120-00	Throttle Valve Cover	1
121	H-004121-01	Throttle Valve Lever	1
B01	NR-547FR	Needle Roller	1
B03	NR-315.8	Needle Roller	1
J01	B-5/16U	Urethane Ball	1
250	H-004250-00	Exhaust Cover	1
703	H-004703-00	Valve Sheet	1
704	H-004704-00	Valve	1
705	H-004705-00	Valve Case	1
707	H-004707-00	Valve Cover	1
708	R-003708-A	Locking Clutch	1
715	H-043715-00	Holder Spring	1
720	H-004720-00	Piston	1
B10	P-316	Pin	2
OPTIONAL PART			
719	H-043719-00	Holder Spring < B >	1

CHISELS



CHISELS LIST

Chisel Shank	Length (mm)	AC No.			
		Blank	Point (P)	Flat (F)	Scaling (SL)
FC-01-4 FC-01SA-R	200	WJ-8	WJ-8P	WJ-8F	WJ-8SL
	250	WJ-10	---	---	---
	300	WJ-12	---	---	---
	400	WJ-16	---	---	---
FC-01-3 FC-01SA-H	200	WJB-8	WJB-8P	WJB-8F	WJB-8SL
	250	WJB-10	WJB-10P	WJB-10F	WJB-10SL
	300	WJB-12	---	---	---
	400	WJB-16	---	---	---

- The related parts are shown in thick frame.
- #107 are supplied together with parts shown in ().
- Specify parts number and quantity when ordering.

Standard Accessories for NPT

AC No.	Description	Qty
IB-202N01	Inlet Bushing	1