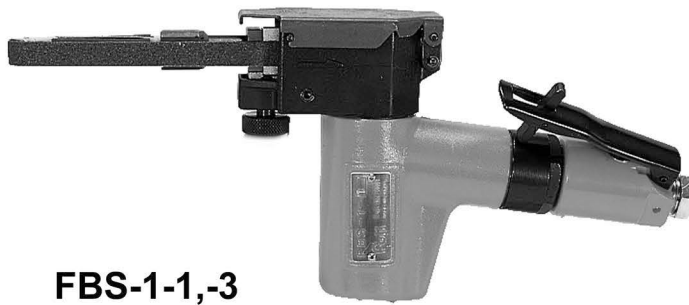


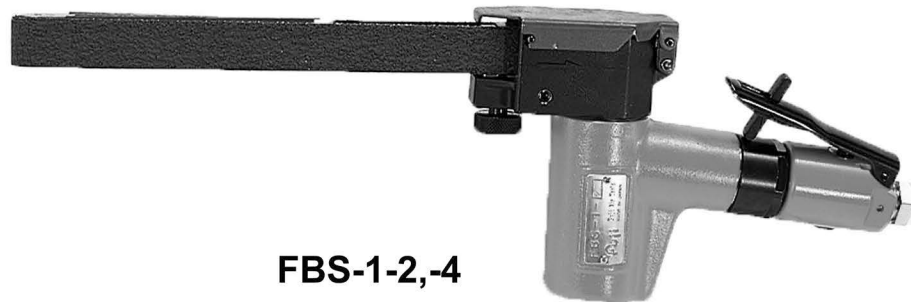
Fuji USER MANUAL

BELT SANDERS

MODELS : FBS-1-1, -2, -3, -4



FBS-1-1,-3



FBS-1-2,-4

SPECIFICATIONS

Model	Belt Size		Rotational Frequency	Belt Speed	Overall Length		Height		Mass		Max. Air Consumption
	mm	in			mm	in	mm	in	kg	lb	
FBS-1-1	10×330	13/32×12 3/64	20,000	1,200	281	11 1/64	124	4 57/64	1.1	2.4	0.57
FBS-1-2	20×520	51/64×20 1/64	20,000	1,200	375	14 1/32	124	4 57/64	1.2	2.6	0.57
FBS-1-3	13×460	33/64×18 1/8	20,000	1,200	345	13 19/32	124	4 57/64	1.2	2.6	0.57
FBS-1-4	20×460	51/64×18 1/8	20,000	1,200	345	13 19/32	124	4 57/64	1.2	2.6	0.57

Air Inlet Thread Size: Rc or NPT 1/4"
Air Hose Size: 9.5mm (3/8")

The performance figures are at 0.63MPa (6.3bar).

 Refer to "The Instructions and Warning for Safety Use" enclosed in each tool box.

Fuji Industrial Technique Co.,Ltd.

2-1-14, Kamiji, Higashinari-ku, Osaka, 537-0003 Japan

Tel : 81-6-6972-2335

Fax : 81-6-6972-2380

ASSEMBLY TOOLS

ABRASIVE TOOLS

DRILLS/TAPPERS

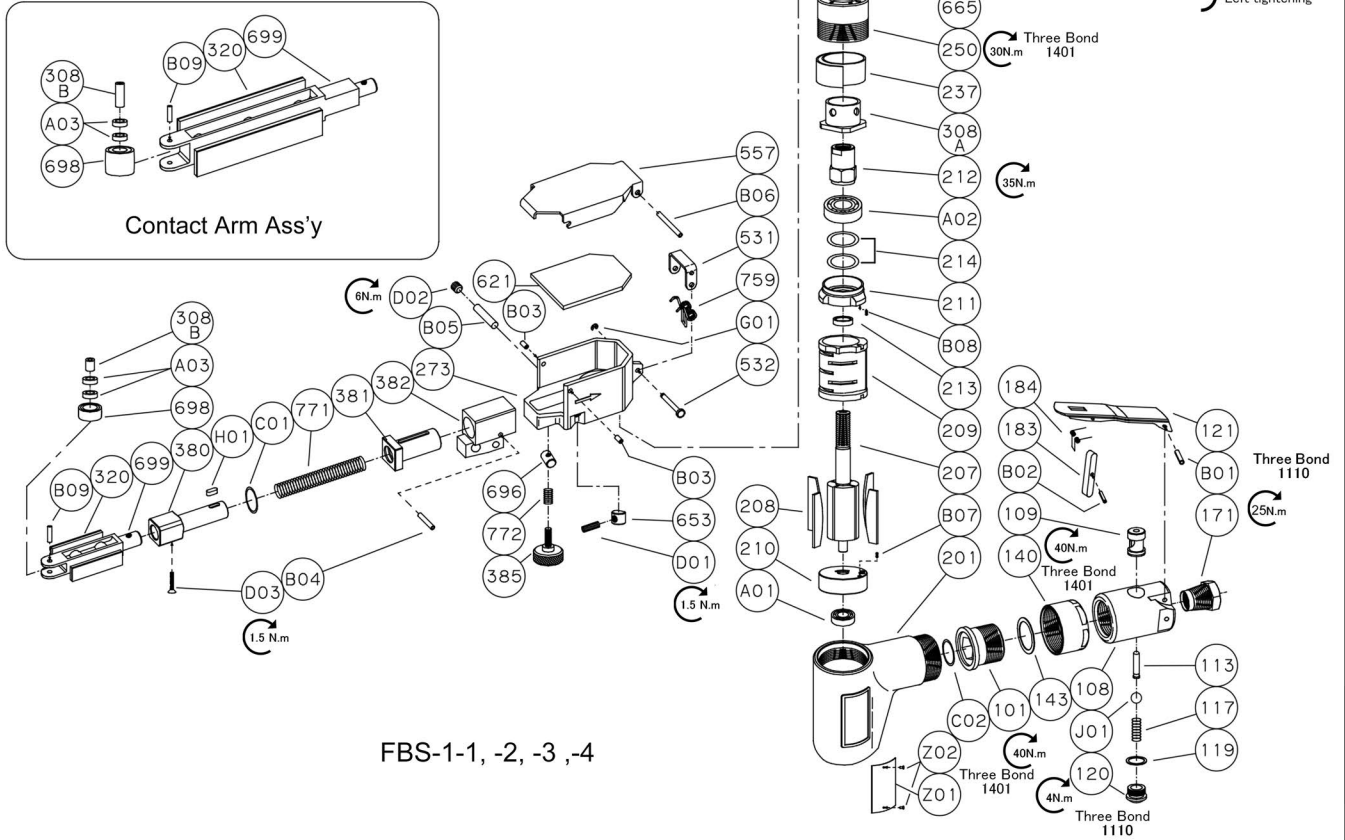
PERCUSSIVE TOOLS

AIR MOTORS

OTHER PRODUCTS

MODELS : FBS-1-1, -2, -3, -4

EXPLODED VIEW



FBS-1-1, -2, -3, -4

PARTS LIST

Index No.	Parts No.	Parts Name	Qty
FBS-1-1, -2, -3, -4			
—	S-169003-00	T.Valve Body Ass'y (Rc)	
—	S-169003-01	T.Valve Body Ass'y (NPT)	
108	S-169108-00	Throttle Valve Body	1
(109)	G-144109-00	Throttle Valve Bushing	1
113	G-144113-00	Throttle Valve Rod	1
117	D-021117-00	Throttle Valve Spring	1
119	D-021119-00	T.V. Cover Packing	1
120	D-021120-00	Throttle Valve Cover	1
171	IB-3020S0	Inlet Bushing (Rc)	1
171	IB-302NS0	Inlet Bushing (NPT)	1
B01	SP-320	Spring Pin	1
J01	B-5/16U	Urethane Ball	1
(F) Lock Lever Ass'y			
121	G-144121-02	Throttle Valve Lever	1
183	G-144183-02	Lock Key	1
184	G-144184-00	Lock Spring	1
B02	SP-218	Spring Pin	1
S-169047-00 Cover Ass'y			
273	S-169273-00	Cover	1
(B03)	SP-36	Spring Pin	2
380	S-169380-00	Adjusting Spindle	1
381	S-169381-00	Adjusting Spindle Bushing	1
382	S-169382-00	Adjusting Spindle Sleeve	1
385	S-169385-00	Adjusting Screw	1
531	S-169531-00	Link	1
532	S-169532-00	Link Spindle	1
557	S-169557-00	Protector	1
621	S-169621-00	Packing (A)	1
653	S-169653-00	Clump Attachment	1
696	S-169696-00	Joint Nut	1
759	S-169759-00	Return Spring	1
771	S-169771-00	Spring	1

Index No.	Parts No.	Parts Name	Qty
772	S-169772-00	Spring (B)	1
B04	SP-318	Spring Pin	1
B05	NR-525	Needle Roller	1
B06	SP-330	Spring Pin	1
C01	O-P12	"O" Ring	1
D01	SS-412	Set Screw	1
D02	SS-66	Set Screw	1
D03	CS-412S	Cup Screw	1
G01	SR-E2	Snap Ring	1
H01	K-338	Key	1
101	A-122101-00	Housing Cover	1
140	A-122140-00	Cup Nut	1
143	A-082143-00	Housing Cover Packing (B)	1
201	S-169201-00	Housing	1
207	M-134207-00	Rotor	1
208	M-073208-00	Rotor Blade	4
209	M-073209-00	Cylinder	1
210	M-073210-00	Cylinder Upper Plate	1
(B07)	SP-255	Spring Pin	1
211	M-073211-00	Cylinder Lower Plate	1
(B08)	SP-255	Spring Pin	1
212	M-134212-00	Rotor Nut	1
213	M-073213-00	Adjusting Collar	1
214	M-073214-A	Adjusting Washer (SHIM) (2)	
237	M-134237-00	Muffler Pad	1
250	M-134250-00	Exhaust Cover	1
308	M-134308-00	Spacer	1
665	S-169665-00	Drive Roller	1
A01	BB-626ZZ	Ball Bearing	1
A02	BB-600ZZ	Ball Bearing	1
C02	O-14	"O" Ring	1
Z01	NP-2059	Name Plate	1
Z02	NPN-0x3.2	Screw Rivet	2

Index No.	Parts No.	Parts Name	Qty
Contact Arm Ass'y			
FBS-1-1			
—	S-169044-00	Contact Arm Ass'y	
308	S-169308-00	Spacer	1
320	S-169320-00	Pad	2
698	S-169698-00	Guide Roller	1
699	S-169699-00	Guide Roller Spindle	1
A03	BB-676AZZ	Ball Bearing	2
B09	NR-311	Needle Roller	1
FBS-1-2			
—	S-169044-01	Contact Arm Ass'y	
308	S-169308-01	Spacer	1
320	S-169320-01	Pad	2
698	S-169698-01	Guide Roller	1
699	S-169699-01	Guide Roller Spindle	1
A03	BB-676AZZ	Ball Bearing	2
B09	NR-321	Needle Roller	1
FBS-1-3			
—	S-169044-02	Contact Arm Ass'y	
308	S-169308-02	Spacer	1
320	S-169320-02	Pad	2
698	S-169698-02	Guide Roller	1
699	S-169699-02	Guide Roller Spindle	1
A03	BB-676AZZ	Ball Bearing	2
B09	NR-314	Needle Roller	1
FBS-1-4			
—	S-169044-03	Contact Arm Ass'y	
308	S-169308-01	Spacer	1
320	S-169320-03	Pad	2
698	S-169698-01	Guide Roller	1
699	S-169699-03	Guide Roller Spindle	1
A03	BB-676AZZ	Ball Bearing	2
B09	NR-321	Needle Roller	1

The related parts are shown in a thick frame.

#108, 210, 211 and 273 are supplied together with parts shown in ().

Specify parts number and quantity when ordering.

Standard Accessories

AC No.	Description	Qty
F-712	2mm Hex. Pin Wrench	1
F-702	2.5mm Hex. Pin Wrench	1
F-716	3/16" Hex. Pin Wrench	1
Sanding Belt	※Marked ● Sanding Belt	1

Uptional Accessories (Sanding Belt)

※Marked ● are Standard Accessories.

Applicable Model	Belt Size (mm)	Grain Size #40	Grain Size #60	Grain Size #80	Grain Size #100	Grain Size #120
FBS-1-1	10x330	DSB-271	DSB-273	● DSB-274	DSB-275	DSB-276
FBS-1-2	20x520	DSB-261	DSB-263	● DSB-264	DSB-265	DSB-266
FBS-1-3	13x460	DSB-221	DSB-223	● DSB-224	DSB-225	DSB-226
FBS-1-4	20x460	DSB-241	DSB-243	● DSB-244	DSB-245	DSB-246